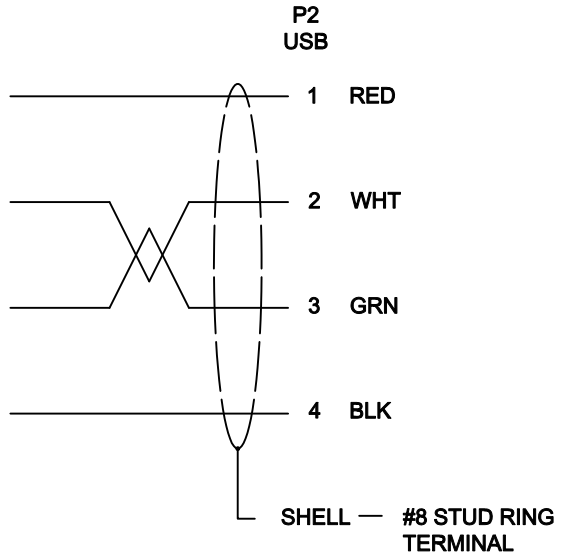
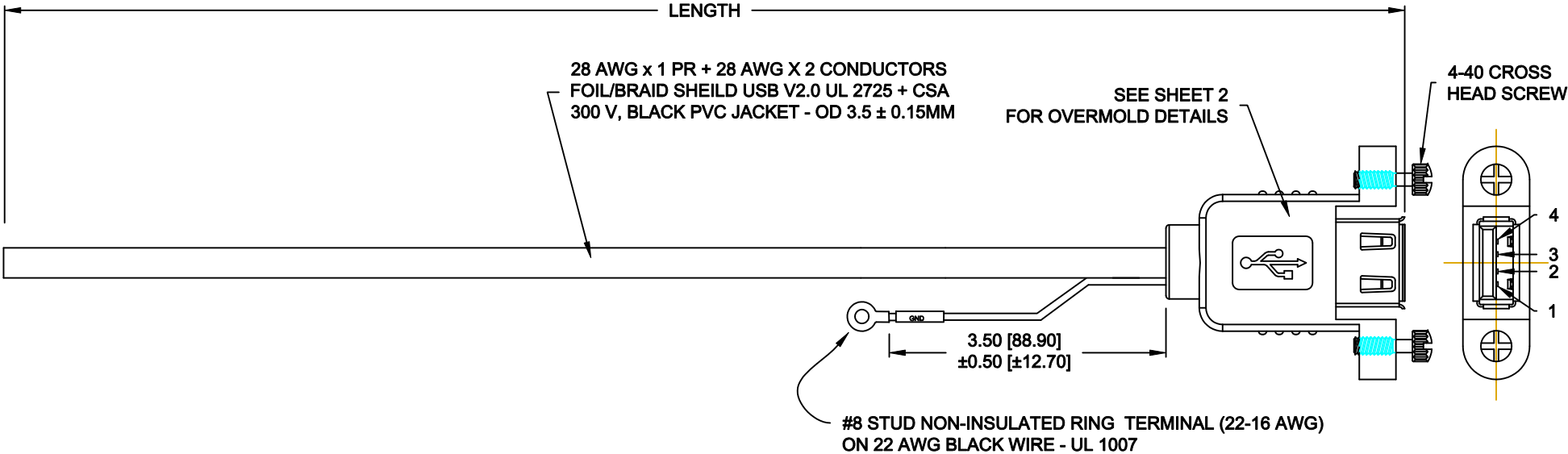


DESCRIPTION: TYPE "A" FEMALE PANEL MOUNT - GROUND LEAD - BLUNT CUT




CONNECTOR PINOUT

CCA-000-Y YY R145

DIMENSION I = INCHES
F = FEET
M = METERS

LENGTH (10" or 24")

ALL MATERIALS AND ASSEMBLY METHODS
USED IN THE MANUFACTURE OF THIS CABLE IS
RoHS COMPLIANT

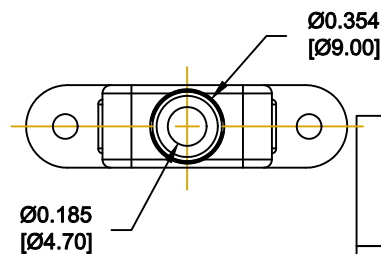
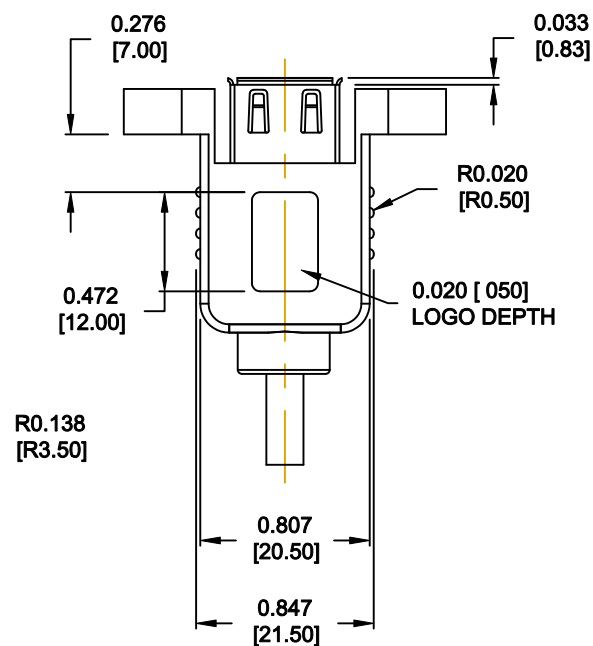
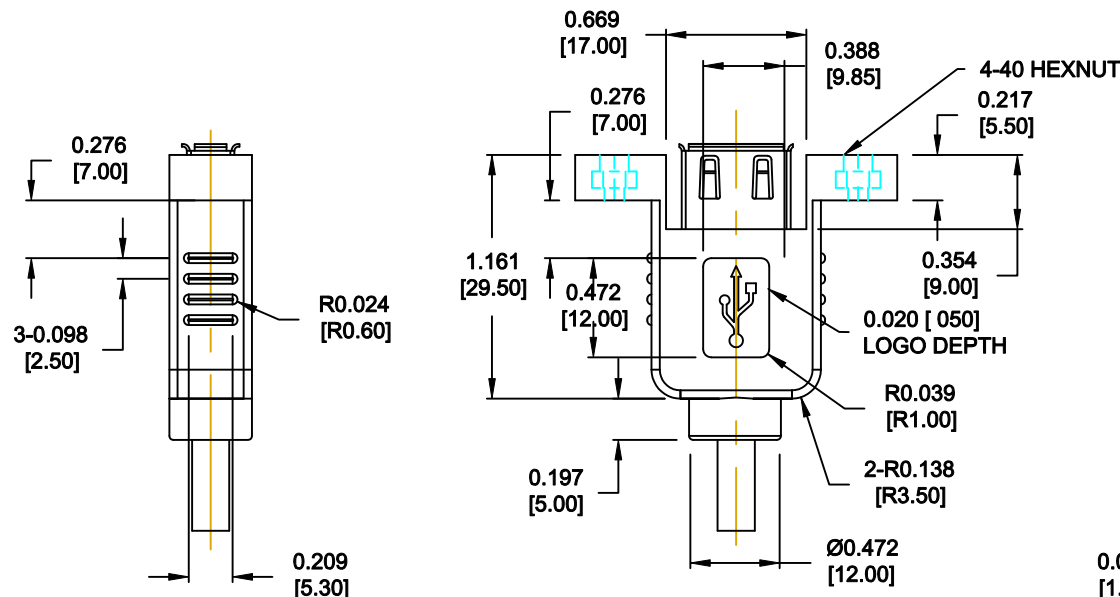
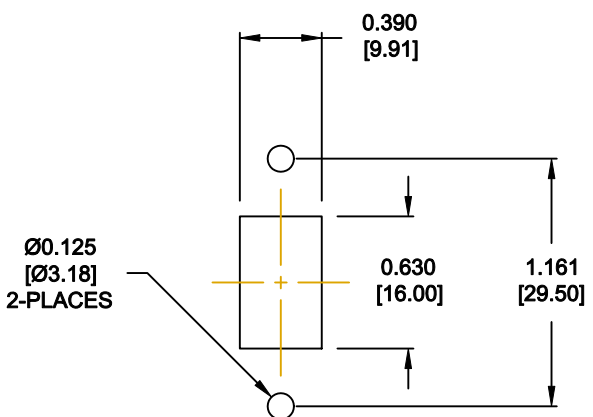
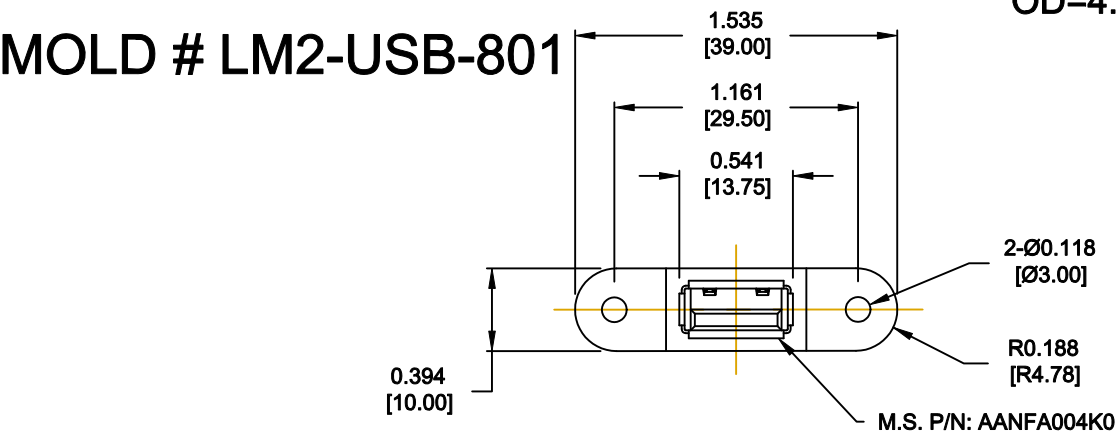
	THESE DRAWINGS AND SPECIFICATIONS ARE THE PROPERTY OF NorComp AND SHALL NOT BE REPRODUCED, COPIED OR USED AS THE BASIS FOR THE MANUFACTURE OF SALE OF APPARATUS WITHOUT WRITTEN PERMISSION.	DRAWN: M. SIGMON		DATE: 11-05-10	
		CHECKED:		DATE:	
NorComp	SCALE: 1 : 1		SHEET 1		OF 2
	DWG NO.		CCA-000-YYR145		
		REV 4			

DESCRIPTION: TYPE "A" FEMALE PANEL MOUNT - GROUND LEAD - OVERMOLD DETAILS

MOLD # LM2-USB-801

OD=4.7mm

RECOMMENDED PANEL CUTOUT



THESE DRAWINGS AND SPECIFICATIONS ARE THE PROPERTY OF NorComp AND SHALL NOT BE REPRODUCED, COPIED OR USED AS THE BASIS FOR THE MANUFACTURE OF SALE OF APPARATUS WITHOUT WRITTEN PERMISSION.

NorComp

DRAWN:	M. SIGMON	DATE:	11-05-10
CHECKED:		DATE:	
SCALE:	1 : 1	SHEET	2 OF 2
DWG NO.	CCA-000-YYR145	REV	4