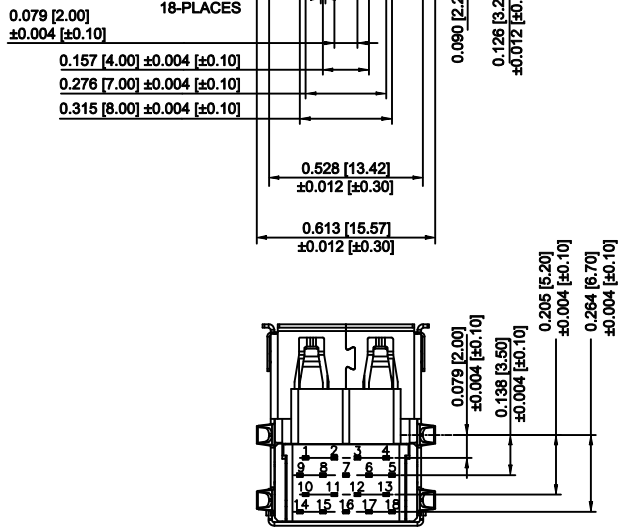
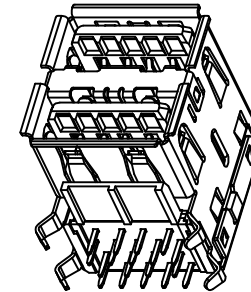
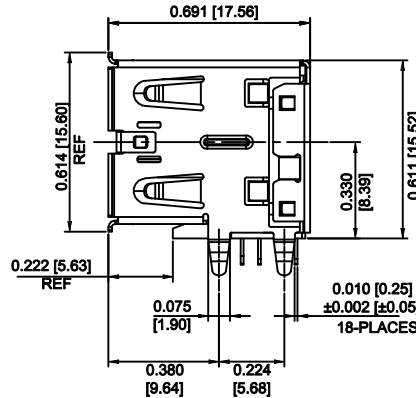
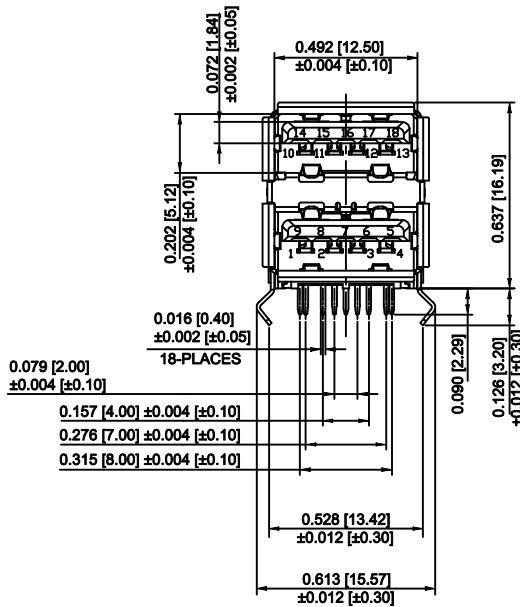
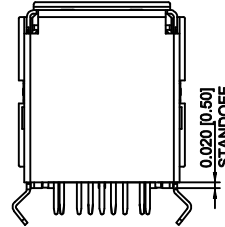
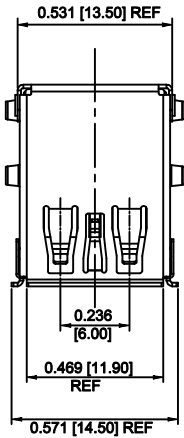


**MATERIALS:**

CONTACTS: C2680R-EH, T=0.25MM  
 HOUSING: LCP, UL 94V-0, BLUE (PANTONE 300C)  
 INNER INSULATOR: LCP, UL 94V-0, BLUE (PANTONE 300C)  
 SHELL: SPCC, T=0.30MM  
 MIDDLE SHELL: SUS204, T=0.20MM

**PLATING:**

CONTACTS: GOLD FLASH (MATING AREA)  
 100 u" TIN ON SOLDER AREA  
 SHELL: NICKEL PLATED



USB 2.0 CONTACT PINS		USB 3.0 CONTACT PINS		
Pin NUMBER	SIGNAL NAME	Pin NUMBER	SIGNAL NAME	
1	10	5	14	StdA_SSRX-
2	11	6	15	StdA_SSRX+
3	12	7	16	GND_DRAIN
4	13	8	17	StdA_SSTX-
Shell	Shield	9	18	StdA_SSTX+

DO NOT SCALE FROM DRAWING

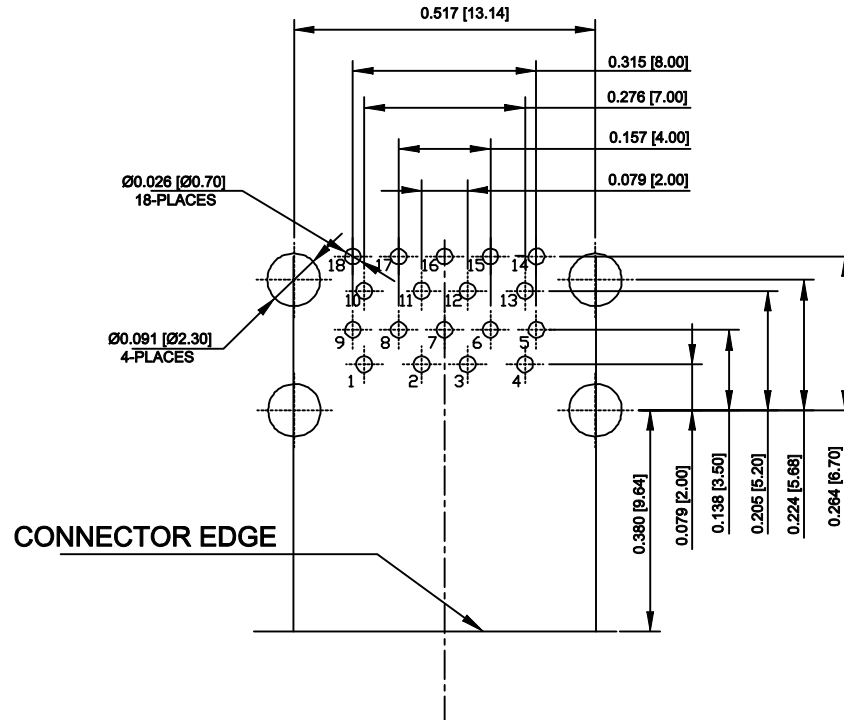


THESE DRAWINGS AND SPECIFICATIONS ARE THE PROPERTY OF NorComp AND SHALL NOT BE REPRODUCED, COPIED OR USED AS THE BASIS FOR THE MANUFACTURE OF SALE OF APPARATUS WITHOUT WRITTEN PERMISSION.

DRAWN: <b>M. SIGMON</b>		DATE: <b>04-11-14</b>	
CHECKED:		DATE:	
SCALE: N.T.S.	SHEET 1	OF 2	REV 4
DWG NO.		<b>056-318-121RTY0</b>	

RoHS COMPLIANT

**NorComp**



P.C.B LAYOUT (COMPONENT SIDE)  
 TOLERANCE:  $\pm 0.002$  [ $\pm 0.05$ ]  
 (TOP VIEW)

DO NOT SCALE FROM DRAWING



THESE DRAWINGS AND SPECIFICATIONS ARE THE PROPERTY OF NorComp AND SHALL NOT BE REPRODUCED, COPIED OR USED AS THE BASIS FOR THE MANUFACTURE OF SALE OF APPARATUS WITHOUT WRITTEN PERMISSION.

DRAWN: <b>M. SIGMON</b>		DATE: <b>04-11-14</b>	
CHECKED:		DATE:	
SCALE: N.T.S.	SHEET 2	OF 2	REV 4
DWG NO.		<b>056-318-121RTY0</b>	

RoHS COMPLIANT

**NorComp**