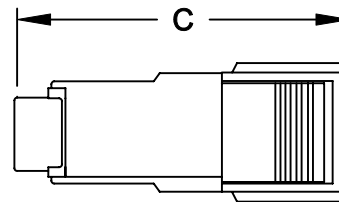
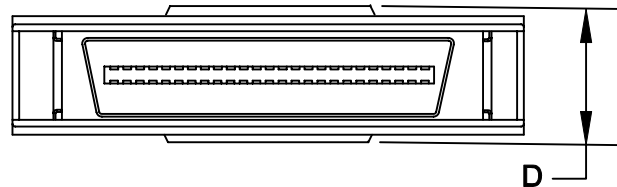
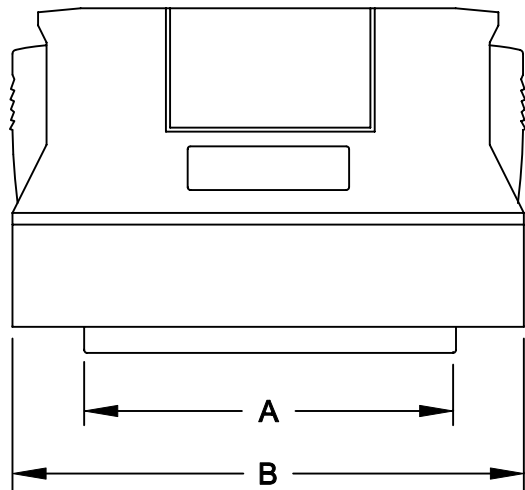


DESCRIPTION: .050 Ribbon Die Cast Backshell w/Spring Latches

	A	B	C	D
50	1.917	1.404	1.339	.571
	48.70	35.65	34.00	14.50




- Kit Includes:
- (1) Male Solder Cup Connector
 - (2) Spring Latches
 - (1) Strain Relief Clip
 - (2) Strain Relief Screws
 - (2) Metal Housings Halves
 - (2) Housing Screws

Materials:

- Connector:
 - Insulator: High Temp plastic
 - U.L. rated 94V-0
 - Contacts: Copper Alloy
 - Shell: Steel with nickel plating
- Backshell: Zinc Alloy
- RoHS COMPLIANT

Electricals:

- Contact current rating: 1.0 Amp
- Dielectric Withstanding Voltage: AC 500 V r.m.s.
- Insulation Resistance: 500 MEGOHMS Min.
- Contact Resistance: 25 MILLIOHMS Max.
- Operating Temperature: -55°C to + 105°C

	THESE DRAWINGS AND SPECIFICATIONS ARE THE PROPERTY OF NorComp AND SHALL NOT BE REPRODUCED, COPIED OR USED AS THE BASIS FOR THE MANUFACTURE OF SALE OF APPARATUS WITHOUT WRITTEN PERMISSION.		DRAWN: WAYNE ROBBINS		DATE: 9-24-05	
			CHECKED:		DATE:	
	<h1>NorComp</h1>		SCALE: 1:2		SHEET 1 OF 1	
			DWG NO. 990-XXX-030L121		REV 1	