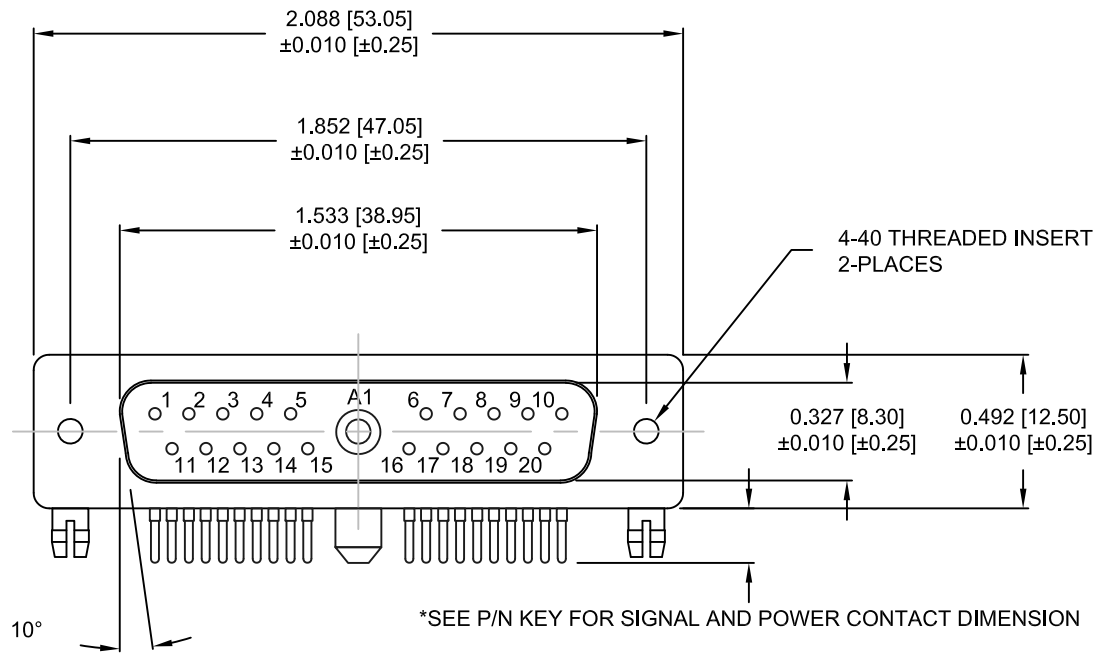


DESCRIPTION: POWER / SIGNAL - RIGHT ANGLE - MALE



SPECIFICATIONS:

ELECTRICAL:

- INSULATOR RESISTANCE: 5 GOHMS Min.
- DIELECTRIC WITHSTANDING: 1,000VAC r.m.s.
- OPERATING TEMPERATURE: -55° C ~ +125° C
- POWER CONTACT RESISTANCE: 1.0 Milliohms Max.
- SIGNAL CONTACT RESISTANCE: 2.7 Milliohms Max.
- POWER PINS: 40 AMPS
- SIGNAL PINS: 5 AMPS

MECHANICAL:

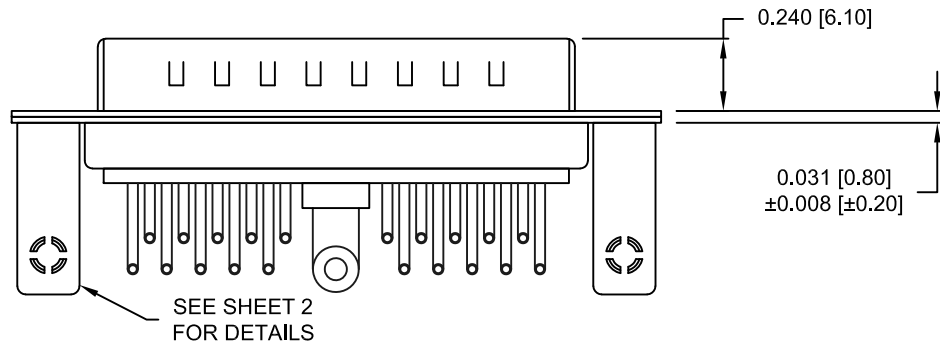
- CONTACT INSERTION FORCE: 4.5 Kg Max.
- CONTACT SEPARATOR FORCE: 0.3Kg Min.

MATERIALS:

- CONTACTS: COPPER ALLOY
- INSULATOR: PBT THERMOPLASTIC, 30% GLASS FILLED, UL94V-0 RATED, BLACK 230°C PROCESS TEMP.
- SHELL: STEEL
- BOARD LOCK: BRASS, NICKEL PLATED
- CLINCHNUT: BRASS, NICKEL PLATED
- BRACKET: STEEL, NICKEL PLATED
- SEAL: F08 FLEXIBLE ADHESIVE

FINISH:

- SHELL: NICKEL
- CONTACTS: FULL GOLD FLASH



684S21W1103L461

- 46 = BRACKET, #4-40, BOARD LOCKS
- 0.185 [4.70] POWER CONTACT & 0.140 [3.55] SIGNAL CONTACT DIMENSIONS
- 62 = BRACKET, #4-40, BOARD LOCKS
- 0.087 [2.22] POWER & SIGNAL CONTACT DIMENSIONS

UNITS = inch [mm]

MEETS IP67 STANDARDS

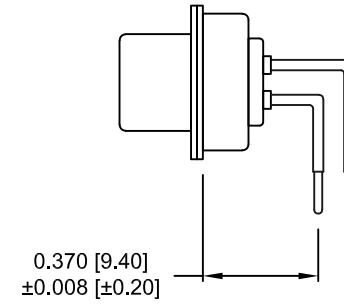
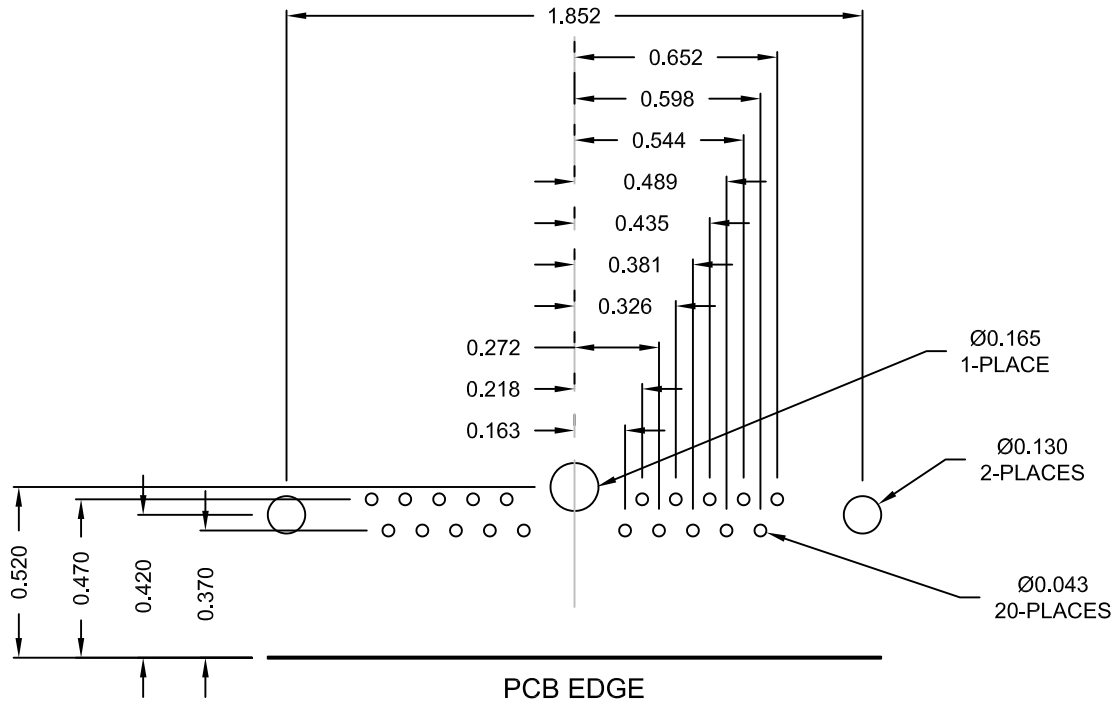
(SEE PAGE 3 FOR SEALING DETAILS)

RoHS COMPLIANT

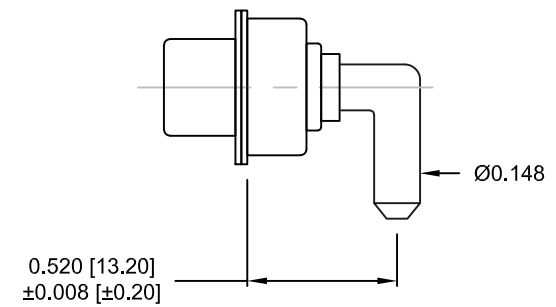
	THESE DRAWINGS AND SPECIFICATIONS ARE THE PROPERTY OF NorComp AND SHALL NOT BE REPRODUCED, COPIED OR USED AS THE BASIS FOR THE MANUFACTURE OR SALE OF APPARATUS WITHOUT WRITTEN PERMISSION.		DRAWN: M. SIGMON	DATE: 06-11-13
	NorComp		SCALE: NTS	SHEET OF 1 3
DWG NO. 684S21W1103L461				

DESCRIPTION: 684 SERIES CONTACTS

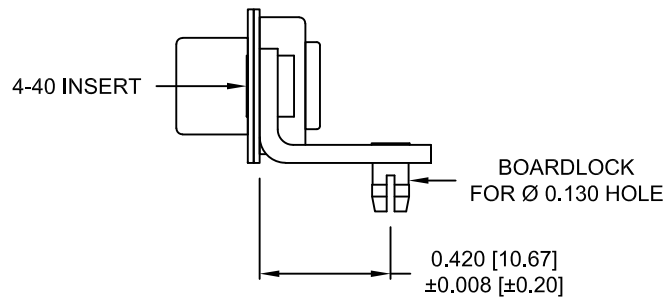
NOTE:
POWER CONTACTS COME
PRE-LOADED INTO INSULATORS



SIGNAL CONTACTS




40 AMP POWER CONTACT



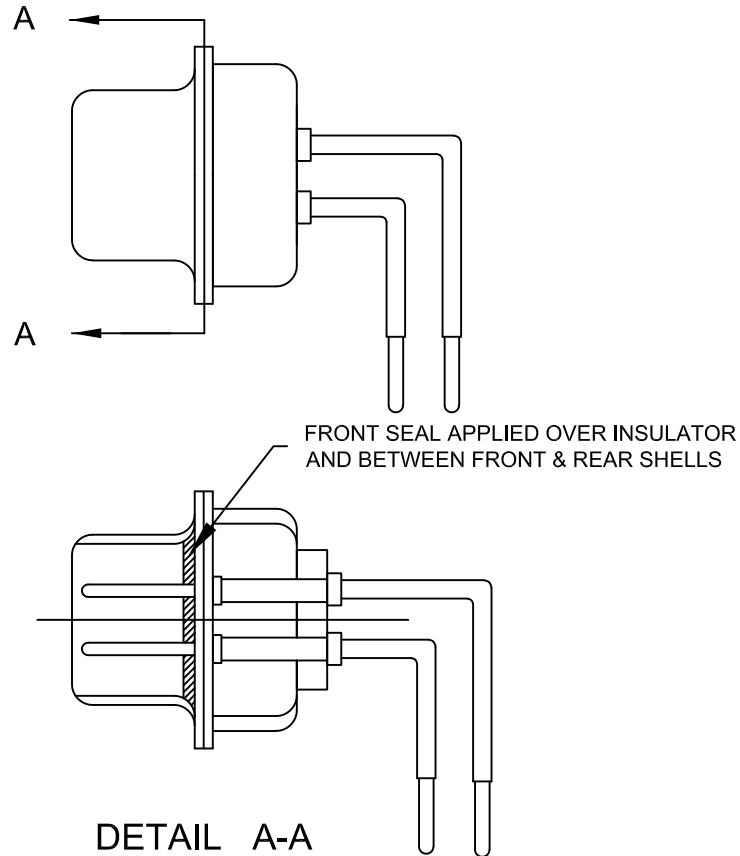
MOUNTING HARDWARE

RoHS COMPLIANT

UNITS = inch [mm]


	THESE DRAWINGS AND SPECIFICATIONS ARE THE PROPERTY OF NorComp AND SHALL NOT BE REPRODUCED, COPIED OR USED AS THE BASIS FOR THE MANUFACTURE OR SALE OF APPARATUS WITHOUT WRITTEN PERMISSION.		DRAWN: M. SIGMON	DATE: 06-11-13
	<h1>NorComp</h1>		SCALE: NTS	SHEET 2 OF 3
			DWG NO. 684S21W1103L461	

DESCRIPTION: 684 SERIES - SEALING PROCESS



SHOWN FOR REFERENCE ONLY

RoHS COMPLIANT

	THESE DRAWINGS AND SPECIFICATIONS ARE THE PROPERTY OF NorComp AND SHALL NOT BE REPRODUCED, COPIED OR USED AS THE BASIS FOR THE MANUFACTURE OR SALE OF APPARATUS WITHOUT WRITTEN PERMISSION.	DRAWN: M. SIGMON		DATE: 06-11-13	
		SCALE: NTS	SHEET 3	OF 3	REV 3
NorComp		DWG NO. 684S21W1103L461			