

SPECIFICATIONS:

MATERIALS:

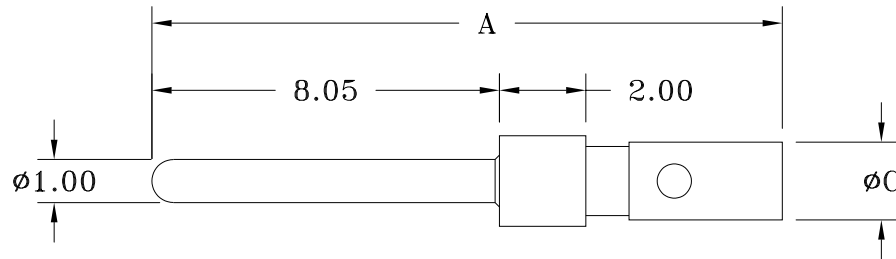
CONTACTS: GOLD PLATED BRASS

ELECTRICAL:

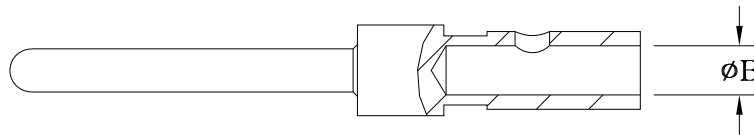
RATED CURRENT: 5A
 CONTACT RESISTANCE: 10 mOhms MAX.

ENVIRONMENT:

OPERATING TEMPERATURE: -55°C TO +125°C



7.0MM RECOMMENDED WIRE STRIP DISTANCE. REFER TO ASSEMBLY SPECIFICATION FOR EXACT REQUIREMENTS (IPC/WHMA-A-620 AS AN EXAMPLE).



680M001-071LY0Y

A = 20-24 AWG WIRE
 B = 26-30 AWG WIRE

1 = GOLD FLASH PLATING
 2 = 30 μ " GOLD PLATING

DIMENSIONS(mm ± 0.20)			
PART NUMBER	A	B	C
680M001-071LA01	14.60	1.14	1.75
680M001-071LB01	14.60	0.69	1.75
680M001-071LA02	14.60	1.14	1.75
680M001-071LB02	14.60	0.69	1.75

ASSEMBLY TOOLING PART NUMBERS	
NORCOMP PART NUMBERS "PURCHASED FROM NORCOMP"	
680M702-071-001	POSITIONER
680M702-071-002	HAND CRIMP TOOL & POSITIONER
170-901-170-000	SIGNAL CONTACT REMOVAL TOOL
DMC PART NUMBERS "PURCHASED FROM DMC"	
WA22	PNEUMATIC CRIMP TOOL (REQUIRES K2175)
WA10A	PNEUMATIC FOOT VALVE
BM-2A	PNEUMATIC BENCH MOUNT

RoHS COMPLIANT

UNITS = mm

DO NOT SCALE FROM DRAWING



THESE DRAWINGS AND SPECIFICATIONS ARE THE PROPERTY OF NorComp AND SHALL NOT BE REPRODUCED, COPIED OR USED AS THE BASIS FOR THE MANUFACTURE OR SALE OF APPARATUS WITHOUT WRITTEN PERMISSION.

DRAWN:

J. KADEL

DATE:

11/15/2022

NorComp

SCALE:

NTS

SHEET

OF

1

1

REV

2

DWG NO.

680M001-071LY0Y