

SPECIFICATIONS:

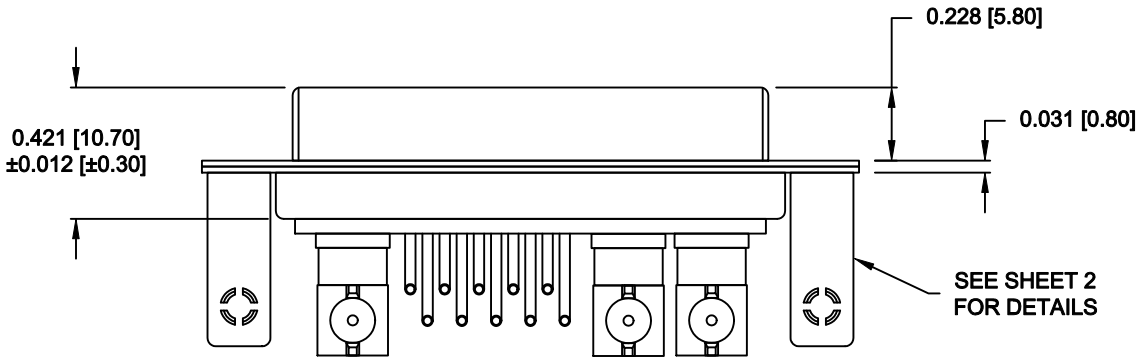
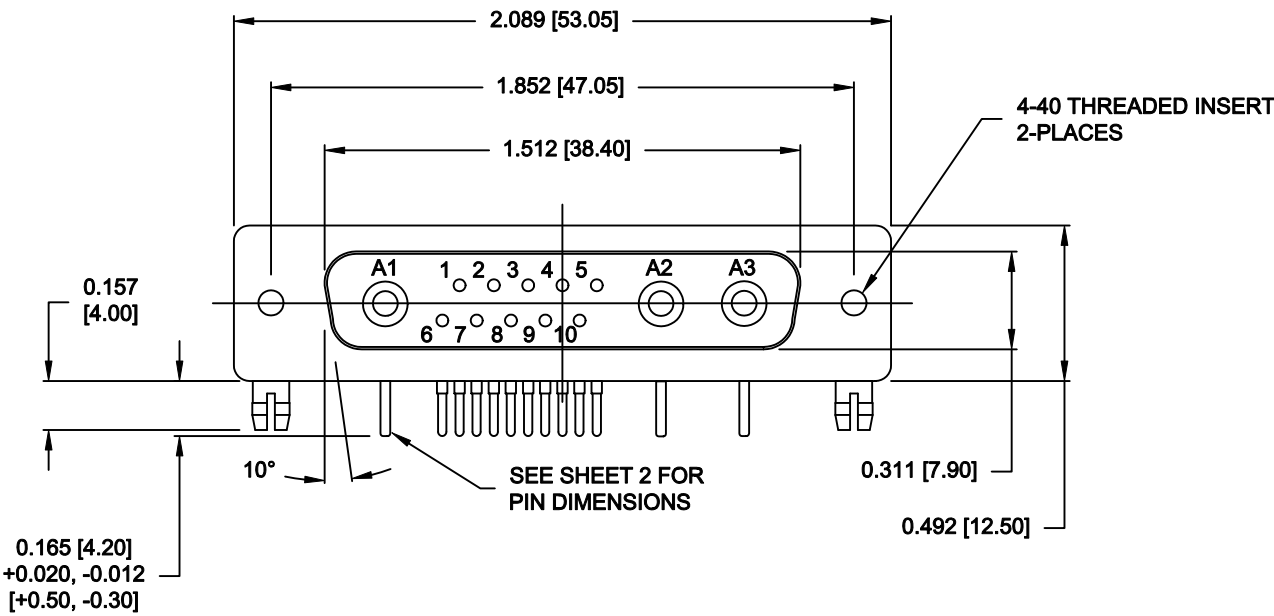
ELECTRICAL:
INSULATOR RESISTANCE: 5 GOHMS Min.
DIELECTRIC WITHSTANDING: 1,000VAC r.m.s.
OPERATING TEMPERATURE: -55° C ~ +125° C
SIGNAL CONTACT RESISTANCE: 10 MillioHMS Max.
COAXIAL CONTACT RESISTANCE: 2.7 MillioHMS Max.
COAXIAL IMPEDANCE: 50 OHM
SIGNAL CURRENT RATING: 5 AMPS

MECHANICAL:
CONTACT INSERTION FORCE: 4.5 Kg Max.
CONTACT SEPARATOR FORCE: 0.3Kg Min.

MATERIALS:
CONTACTS: COPPER ALLOY
INSULATOR: PBT UL94V-0 RATED, BLACK
230°C PROCESS TEMP.
STEEL

SHELL:



FINISH:
SHELL: NICKEL
CONTACTS: FULL GOLD FLASH



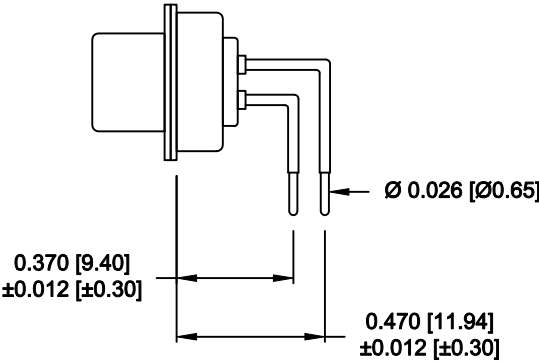
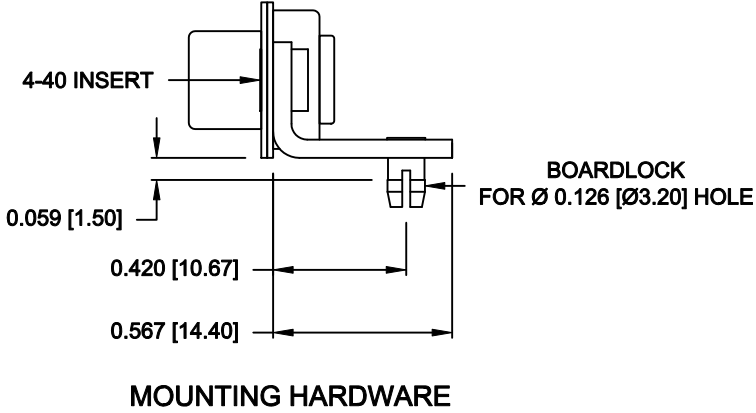
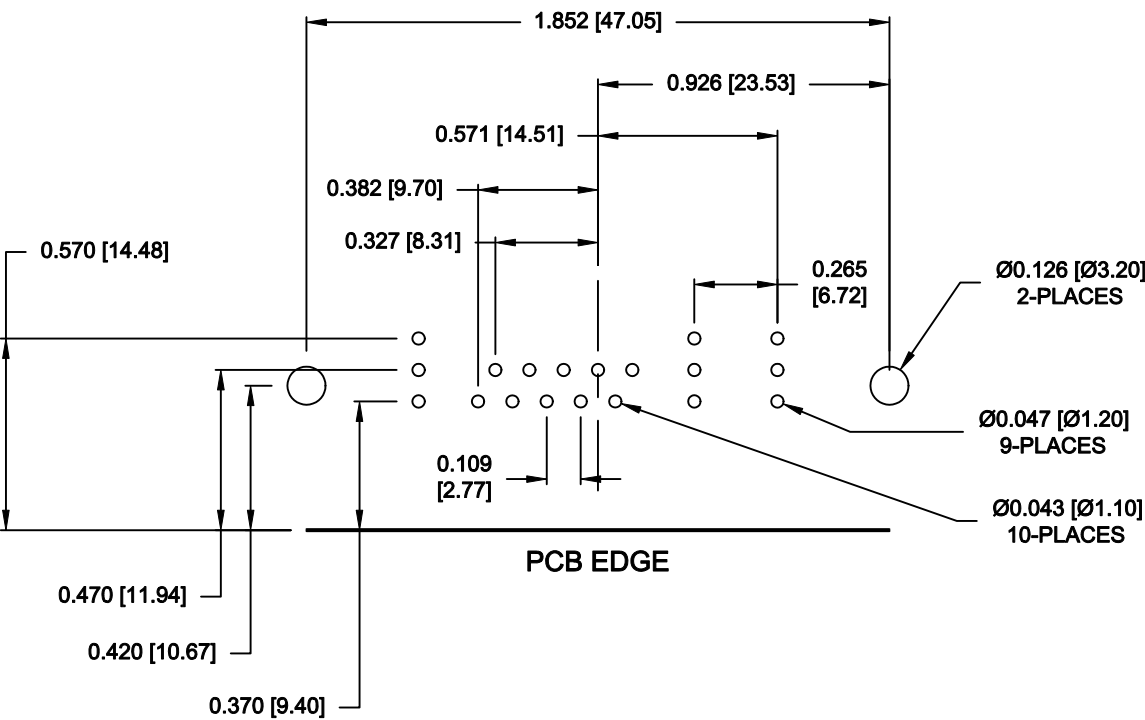
685M13W3203L461

46 = 4-40 INSERTS / BOARD LOCKS

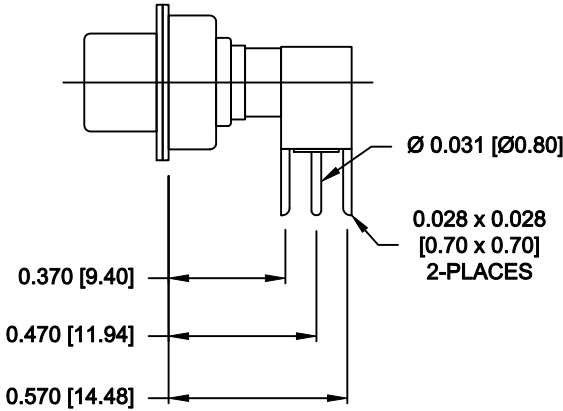
RoHS COMPLIANT

	THESE DRAWINGS AND SPECIFICATIONS ARE THE PROPERTY OF NorComp AND SHALL NOT BE REPRODUCED, COPIED OR USED AS THE BASIS FOR THE MANUFACTURE OR SALE OF APPARATUS WITHOUT WRITTEN PERMISSION.	DRAWN: M. SIGMON		DATE: 03-05-15	
		CHECKED:		DATE:	
		SCALE: 1.5 = 1	SHEET 1 OF 2		REV 0
		DWG NO. 685M13W3203L461			

NOTE:
POWER CONTACTS COME
PRE-LOADED INTO INSULATORS




SIGNAL CONTACTS



50 OHM COAXIAL CONTACT

RoHS COMPLIANT

	THESE DRAWINGS AND SPECIFICATIONS ARE THE PROPERTY OF NorComp AND SHALL NOT BE REPRODUCED, COPIED OR USED AS THE BASIS FOR THE MANUFACTURE OR SALE OF APPARATUS WITHOUT WRITTEN PERMISSION.	DRAWN: M. SIGMON		DATE: 03-05-15	
		CHECKED:		DATE:	
<h1>NorComp</h1>		SCALE: 1.5 = 1	SHEET 2		OF 2
		REV 0			
		DWG NO. 685M13W3203L461			