

DESCRIPTION: COAXIAL - VERTICAL BOARD - MALE - MACHINED

SPECIFICATIONS:

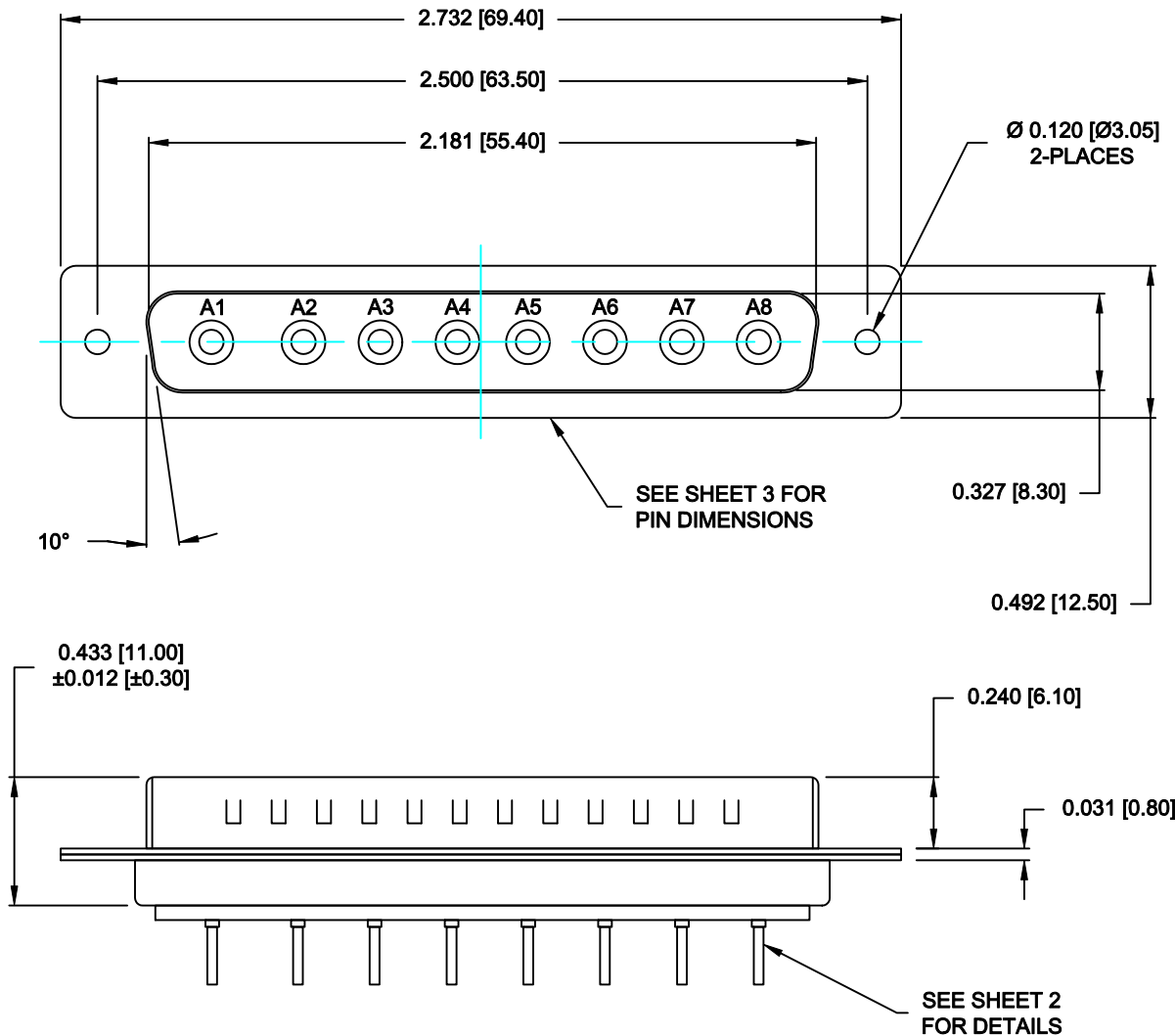
ELECTRICAL:
INSULATOR RESISTANCE: 5 GOHMS Min.
OPERATING TEMPERATURE: -55° C ~ +125° C
CONTACT RESISTANCE: 2.7 Milliohms Max.
COAXIAL CONTACT IMPEDANCE: 50 OHM

MECHANICAL:
CONTACT INSERTION FORCE: 4.5 Kg Max.
CONTACT SEPARATOR FORCE: 0.3Kg Min.

MATERIALS:
CONTACTS: COPPER ALLOY
INSULATOR: PBT UL94V-0 RATED,
BLACK
230°C PROCESS TEMP.
STEEL

SHELL:


FINISH:
SHELL: NICKEL
CONTACTS: FULL GOLD FLASH



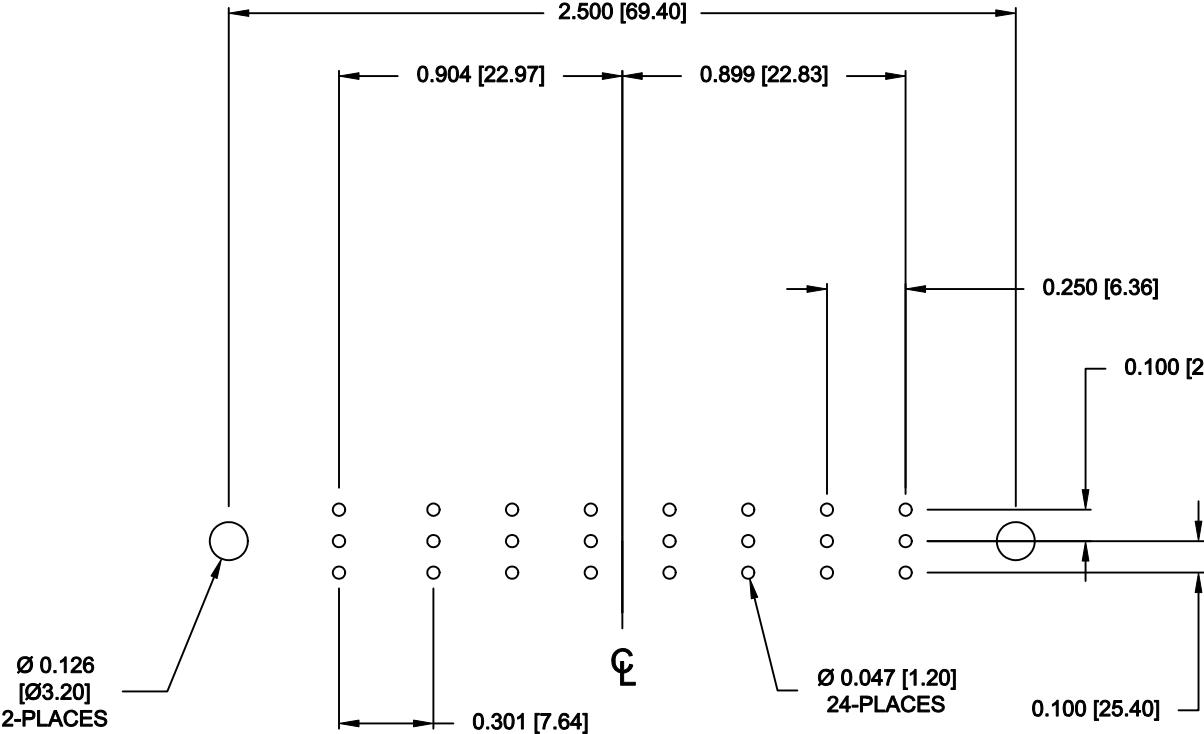
683M8W8103L001

00 = 50 OHM COAXIAL

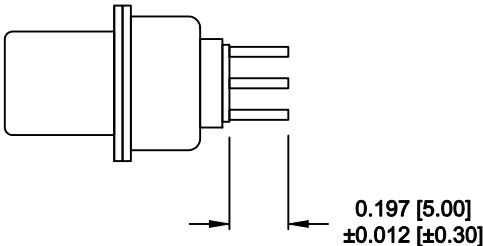
RoHS COMPLIANT

	THESE DRAWINGS AND SPECIFICATIONS ARE THE PROPERTY OF NorComp AND SHALL NOT BE REPRODUCED, COPIED OR USED AS THE BASIS FOR THE MANUFACTURE OF SALE OF APPARATUS WITHOUT WRITTEN PERMISSION.	DRAWN: M. SIGMON		DATE: 03-10-14	
		CHECKED: X		DATE: X	
NorComp	SCALE: N.T.S.	SHEET 1		OF 2	REV 1
	DWG NO. 683M8W8103L001				

**NOTE:
COAXIAL CONTACTS COME
PRE-LOADED INTO INSULATORS**




RECOMMENDED PCB LAYOUT



50 OHM COAXIAL CONTACT

RoHS COMPLIANT

	THESE DRAWINGS AND SPECIFICATIONS ARE THE PROPERTY OF NorComp AND SHALL NOT BE REPRODUCED, COPIED OR USED AS THE BASIS FOR THE MANUFACTURE OF SALE OF APPARATUS WITHOUT WRITTEN PERMISSION.	DRAWN: M. SIGMON		DATE: 03-10-14	
		CHECKED: X		DATE: X	
<h1>NorComp</h1>		SCALE: N.T.S.	SHEET 2 OF 2		REV 1
		DWG NO. 683M8W8103L001			