

DESCRIPTION: COAXIAL - VERTICAL BOARD - MALE - MACHINED

UNITS = INCHES [MM]

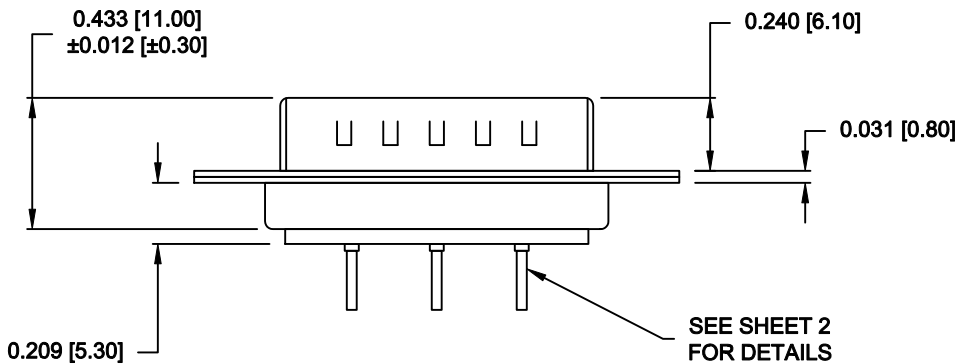
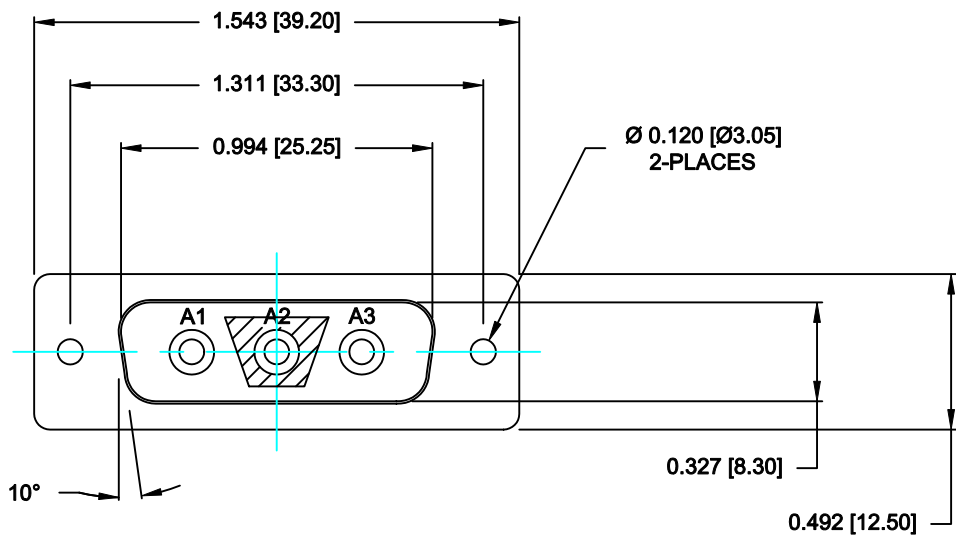
SPECIFICATIONS:

ELECTRICAL:  
INSULATOR RESISTANCE: 5 GOHMS Min.  
OPERATING TEMPERATURE: -55° C ~ +125° C  
CONTACT RESISTANCE: 2.7 MillioHMS Max.  
COAXIAL CONTACT IMPEDANCE: 50 OHM

MECHANICAL:  
CONTACT INSERTION FORCE: 4.5 Kg Max.  
CONTACT SEPARATOR FORCE: 0.3Kg Min.

MATERIALS:  
CONTACTS: COPPER ALLOY  
INSULATOR: PBT UL94V-0 RATED,  
BLACK  
230°C PROCESS TEMP.  
STEEL



SHELL:  
FINISH: NICKEL  
SHELL: FULL GOLD FLASH  
CONTACTS:



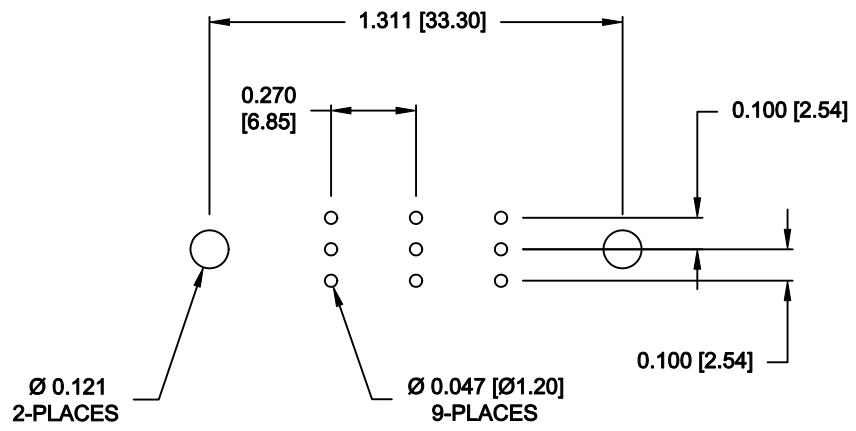
683M3W3K103L001

00 = 50 OHM COAXIAL

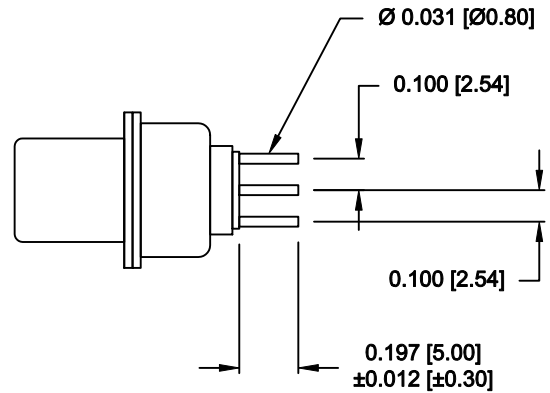
RoHS COMPLIANT

	THESE DRAWINGS AND SPECIFICATIONS ARE THE PROPERTY OF NorComp AND SHALL NOT BE REPRODUCED, COPIED OR USED AS THE BASIS FOR THE MANUFACTURE OF SALE OF APPARATUS WITHOUT WRITTEN PERMISSION.	DRAWN: <b>M. SIGMON</b>		DATE: <b>03-12-15</b>	
		CHECKED: <b>X</b>		DATE: <b>X</b>	
	SCALE: <b>N.T.S.</b>		SHEET <b>1</b>		OF <b>2</b>
	DWG NO. <b>683M3W3K103L001</b>		REV <b>1</b>		

NOTE:  
COAXIAL CONTACTS COME  
PRE-LOADED INTO INSULATORS




RECOMMENDED PCB LAYOUT



50 OHM COAXIAL CONTACT

RoHS COMPLIANT

	THESE DRAWINGS AND SPECIFICATIONS ARE THE PROPERTY OF NorComp AND SHALL NOT BE REPRODUCED, COPIED OR USED AS THE BASIS FOR THE MANUFACTURE OF SALE OF APPARATUS WITHOUT WRITTEN PERMISSION.	DRAWN: <b>M. SIGMON</b>		DATE: <b>03-12-15</b>	
		CHECKED: <b>X</b>		DATE: <b>X</b>	
<b>NorComp</b>	SCALE: <b>N.T.S.</b>		SHEET <b>2</b> OF <b>2</b>		REV <b>1</b>
	DWG NO. <b>683M3W3K103L001</b>				