

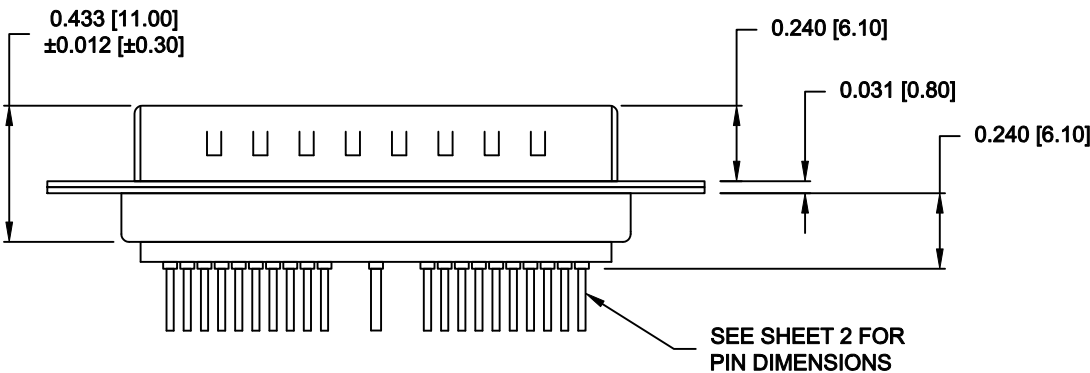
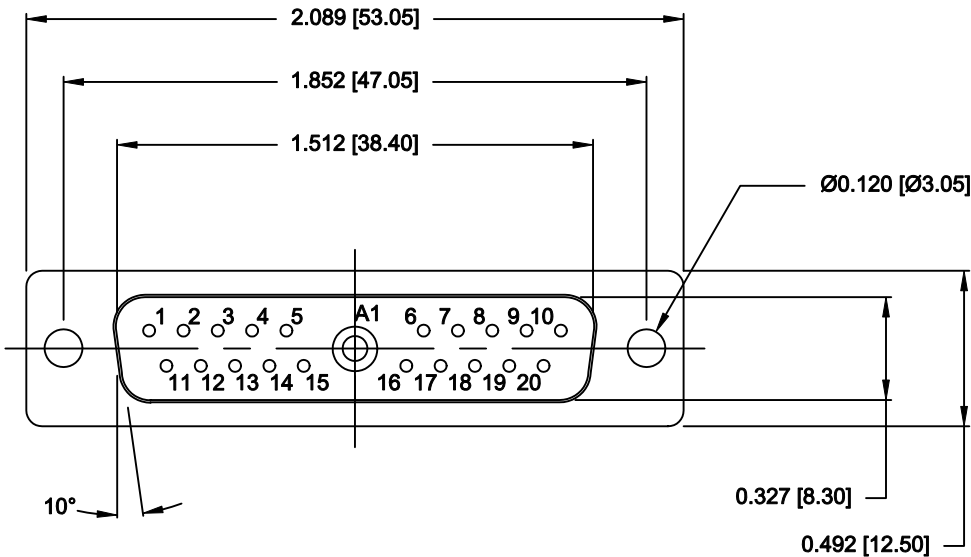
SPECIFICATIONS:

ELECTRICAL:
INSULATOR RESISTANCE: 5 GOHMS Min.
DIELECTRIC WITHSTANDING: 1,000VAC r.m.s.
OPERATING TEMPERATURE: -55° C ~ +125° C
SIGNAL CONTACT RESISTANCE: 10 MillioHMS Max.
COAXIAL CONTACT RESISTANCE: 2.7 MillioHMS Max.
COAXIAL IMPEDANCE: 50 OHM
SIGNAL CURRENT RATING: 5 AMPS

MECHANICAL:
CONTACT INSERTION FORCE: 4.5 Kg Max.
CONTACT SEPARATOR FORCE: 0.3Kg Min.

MATERIALS:
CONTACTS: COPPER ALLOY
INSULATOR: PBT UL94V-0 RATED,
BLACK
230°C PROCESS TEMP.
STEEL

FINISH:
SHELL: NICKEL
CONTACTS: FULL GOLD FLASH




683M21W1103L001

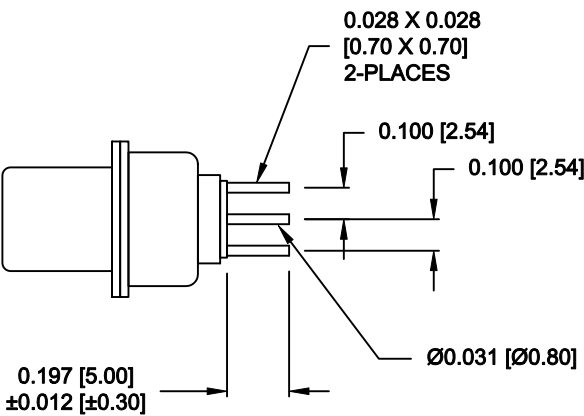
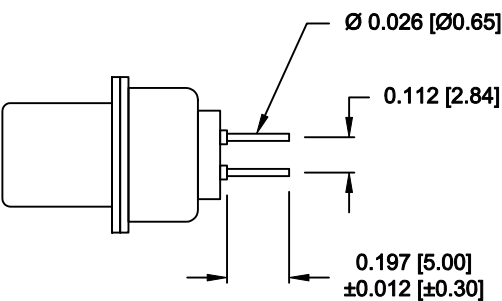
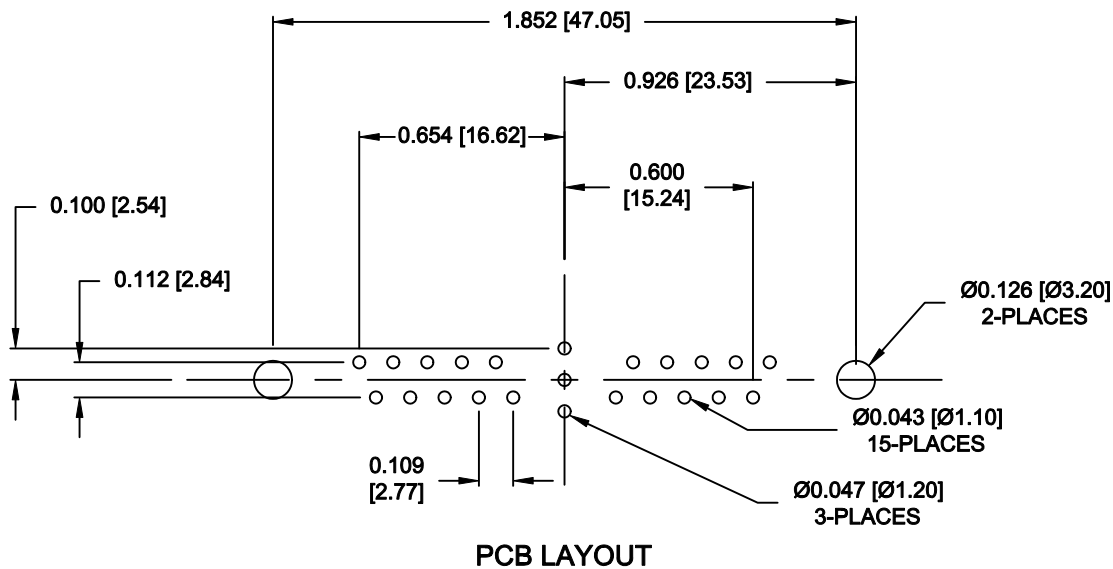
00 = 50 OHM COAXIAL

GENERAL TOLERANCE: ±0.008[±0.20]

RoHS COMPLIANT


	THESE DRAWINGS AND SPECIFICATIONS ARE THE PROPERTY OF NorComp AND SHALL NOT BE REPRODUCED, COPIED OR USED AS THE BASIS FOR THE MANUFACTURE OR SALE OF APPARATUS WITHOUT WRITTEN PERMISSION.	DRAWN: M. SIGMON		DATE: 12-19-16	
		CHECKED:		DATE:	
		SCALE: 1.5 = 1	SHEET 1 OF 2		REV 0
NorComp		DWG NO. 683M21W1103L001			

NOTE:
COAXIAL AND SIGNAL CONTACTS COME
PRE-LOADED INTO INSULATORS



RoHS COMPLIANT

GENERAL TOLERANCE: ± 0.008 [± 0.20]

	THESE DRAWINGS AND SPECIFICATIONS ARE THE PROPERTY OF NorComp AND SHALL NOT BE REPRODUCED, COPIED OR USED AS THE BASIS FOR THE MANUFACTURE OR SALE OF APPARATUS WITHOUT WRITTEN PERMISSION.	DRAWN: M. SIGMON		DATE: 12-19-16	
		CHECKED:		DATE:	
<div>NorComp</div>		SCALE: 1.5 = 1	SHEET 2 OF 2		REV 0
		DWG NO. 683M21W1103L001			