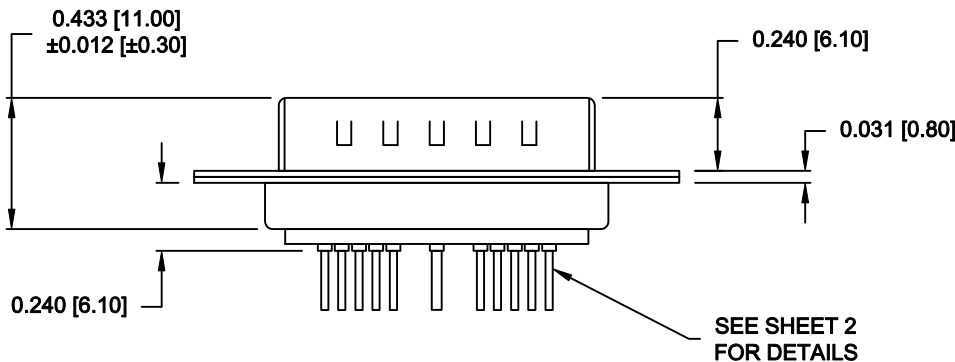
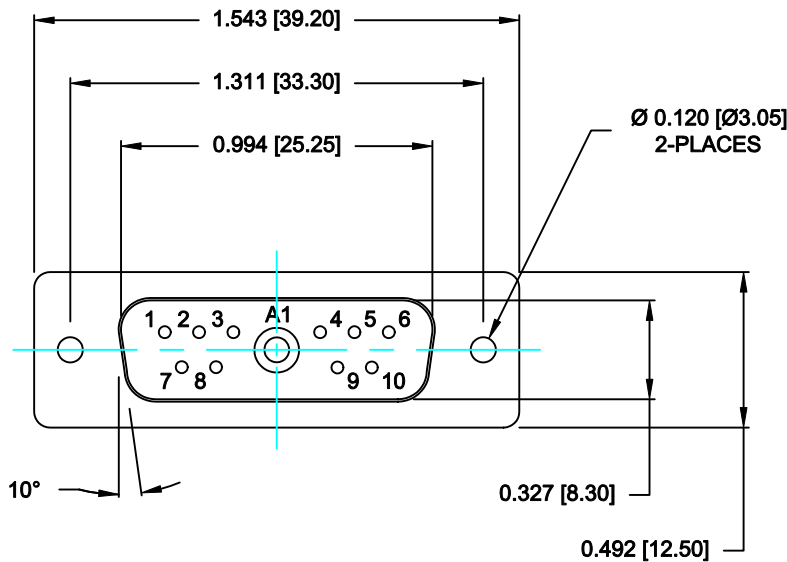


SPECIFICATIONS:


<b>ELECTRICAL:</b>	
INSULATOR RESISTANCE:	5 GOHMS Min.
DIELECTRIC WITHSTANDING:	1,000VAC r.m.s.
OPERATING TEMPERATURE:	-55° C ~ +125° C
SIGNAL CONTACT RESISTANCE:	10 MillioHMS Max.
COAXIAL CONTACT RESISTANCE:	2.7 MillioHMS Max.
COAXIAL PINS:	50 OHM
SIGNAL CONTACT CURRENT RATING:	5 AMPS
<b>MECHANICAL:</b>	
CONTACT INSERTION FORCE:	4.5 Kg Max.
CONTACT SEPARATOR FORCE:	0.3Kg Min.
<b>MATERIALS:</b>	
CONTACTS:	BRASS
INSULATOR:	PBT UL94V-0 RATED, 230°C PROCESS TEMP.
SHELL:	STEEL
FINISH:	
SHELL:	NICKEL
CONTACTS:	FULL GOLD FLASH



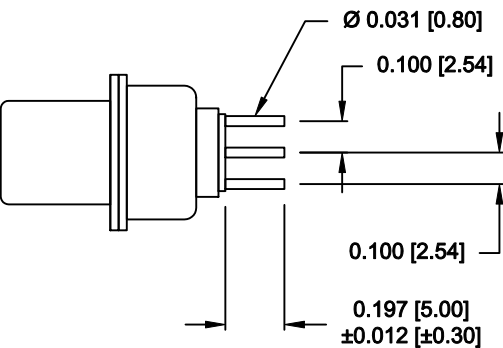
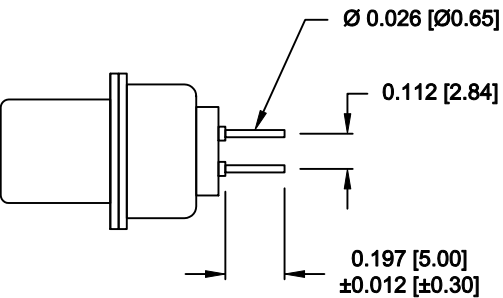
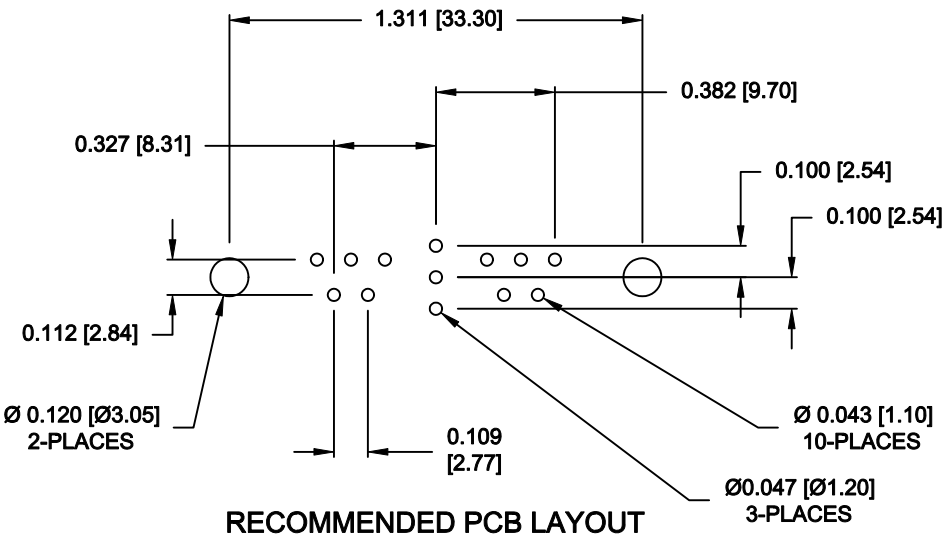
683M11W1103L001

00 = 50 OHM COAXIAL


RoHS COMPLIANT

	THESE DRAWINGS AND SPECIFICATIONS ARE THE PROPERTY OF NorComp AND SHALL NOT BE REPRODUCED, COPIED OR USED AS THE BASIS FOR THE MANUFACTURE OF SALE OF APPARATUS WITHOUT WRITTEN PERMISSION.	DRAWN: <b>M. SIGMON</b>		DATE: <b>03-13-15</b>		
		CHECKED: <b>X</b>		DATE: <b>X</b>		
<b>NorComp</b>		SCALE: <b>N.T.S.</b>	SHEET <b>1</b>		OF <b>2</b>	REV <b>0</b>
		DWG NO. <b>683M11W1103L001</b>				

NOTE:  
SIGNAL AND COAXIAL CONTACTS  
COME PRE-LOADED INTO INSULATORS



RoHS COMPLIANT

	THESE DRAWINGS AND SPECIFICATIONS ARE THE PROPERTY OF NorComp AND SHALL NOT BE REPRODUCED, COPIED OR USED AS THE BASIS FOR THE MANUFACTURE OF SALE OF APPARATUS WITHOUT WRITTEN PERMISSION.	DRAWN: <b>M. SIGMON</b>		DATE: <b>03-13-15</b>	
		CHECKED: <b>X</b>		DATE: <b>X</b>	
<b>NorComp</b>	SCALE: <b>N.T.S.</b>	SHEET <b>2</b>		OF <b>2</b>	REV <b>0</b>
	DWG NO. <b>683M11W1103L001</b>				