

DESCRIPTION: COAXIAL / SIGNAL - VERTICAL BOARD - FEMALE

## SPECIFICATIONS:

### ELECTRICAL:

INSULATOR RESISTANCE: 5 GOHMS Min.  
DIELECTRIC WITHSTANDING: 1,000VAC r.m.s.  
OPERATING TEMPERATURE: -55° C ~ +125° C  
COAXIAL CONTACT IMPEDANCE: 75 OHMS  
COAXIAL CONTACT RESISTANCE: 2.7 Milliohms Max.  
SIGNAL CONTACT RESISTANCE: 10 Milliohms Max.  
SIGNAL PINS: 5 AMPS

### MECHANICAL:

CONTACT INSERTION FORCE: 4.5 Kg Max.  
CONTACT SEPARATOR FORCE: 0.3Kg Min.

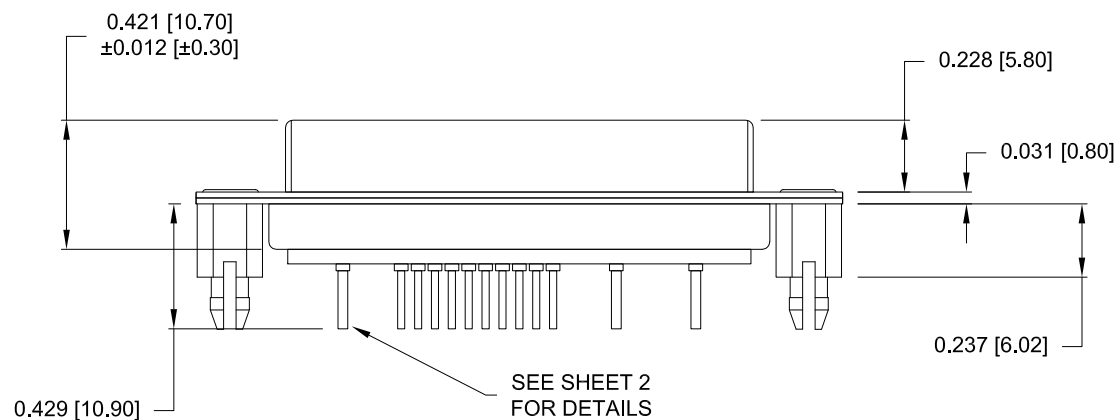
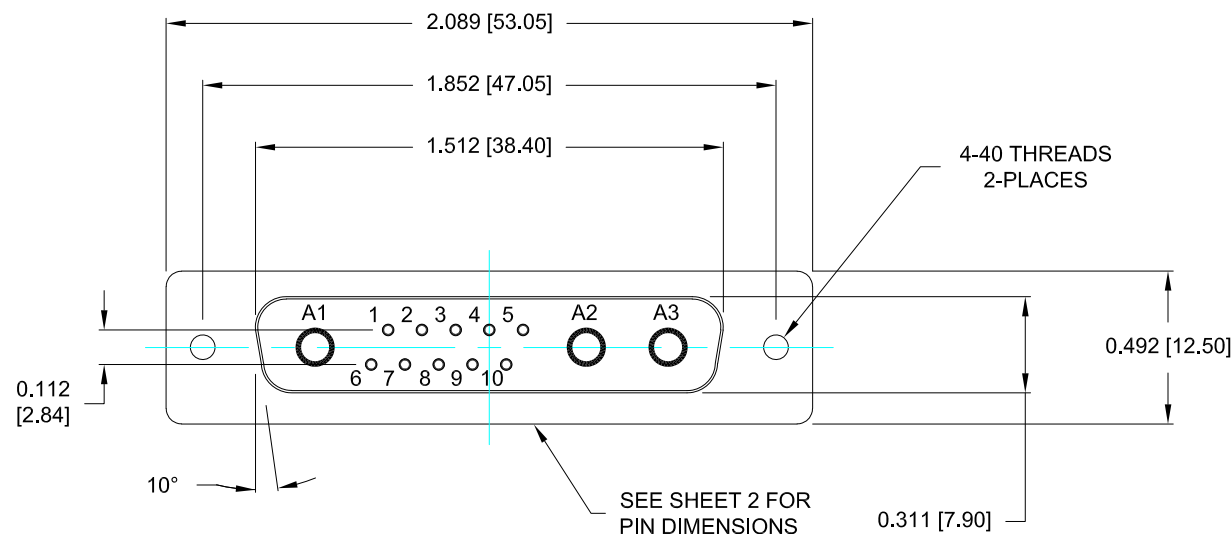
### MATERIALS:

CONTACTS: COPPER ALLOY  
INSULATOR: PBT UL94V-0 RATED,  
230°C PROCESS TEMP.  
BLACK  
STEEL  
BRASS

SHELL:  
BOARDLOCK:

### FINISH:

SHELL: NICKEL  
CONTACTS: FULL GOLD FLASH  
BOARDLOCK: TIN



# 683M13W3203SYYY

0 = 75 OHM

1 = Gold Flash

0 = NO HARDWARE

1 = 0.065" CN

2 = 0.250" CN

A = 0.237" 4-40 SPACER/BOARDLOCK

B = 0.237" BOARDLOCK

5 = 0.224" BOARDLOCK

RoHS COMPLIANT



THESE DRAWINGS AND SPECIFICATIONS ARE THE PROPERTY OF NorComp AND SHALL NOT BE REPRODUCED, COPIED OR USED AS THE BASIS FOR THE MANUFACTURE OR SALE OF APPARATUS WITHOUT WRITTEN PERMISSION.

DRAWN:

M. SIGMON

DATE:

04/04/2016

UNITS = INCHES [MM]

DO NOT SCALE FROM DRAWING

# NorComp

SCALE:  
NTS

SHEET  
1

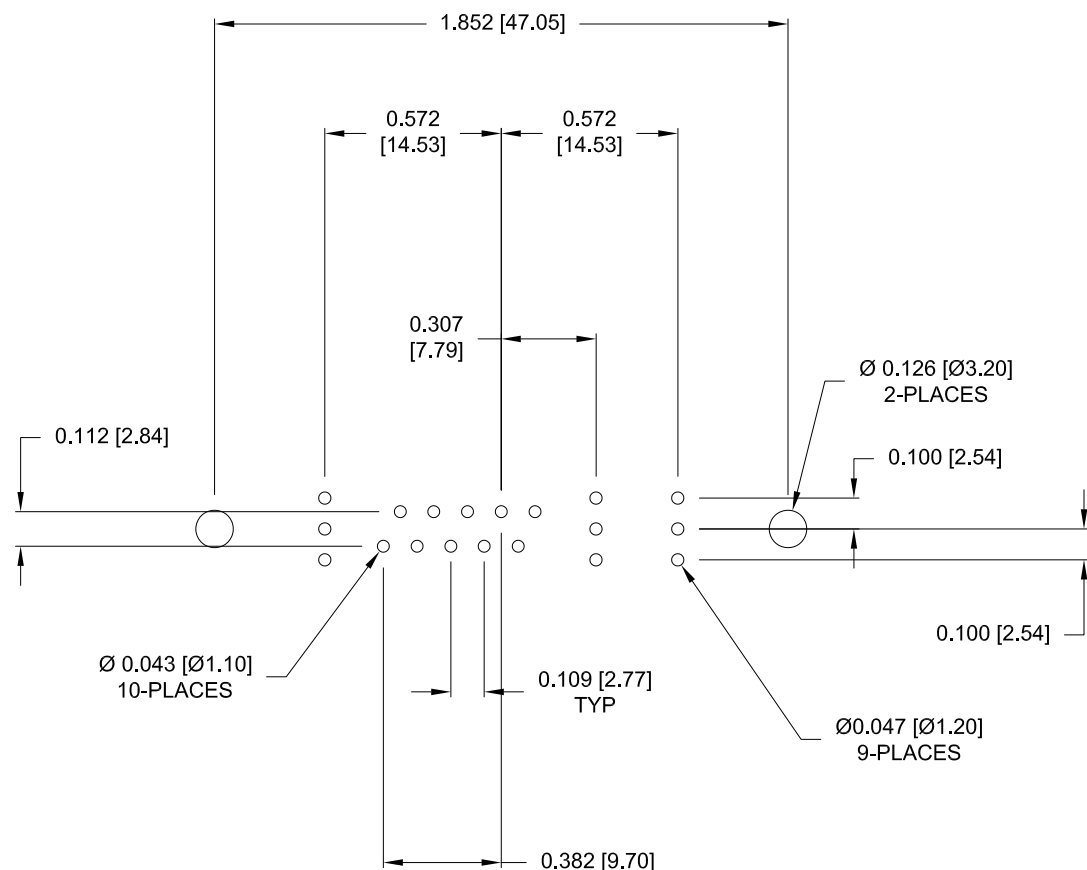
OF  
3

REV  
0

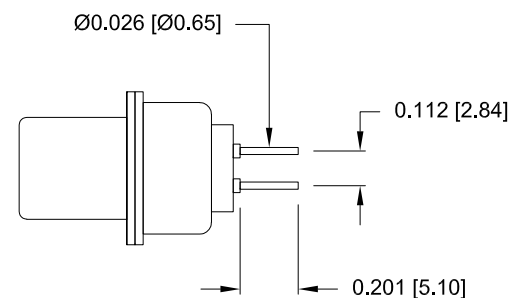
## 683M13W3203SYYY

DESCRIPTION: 683M SERIES CONTACTS

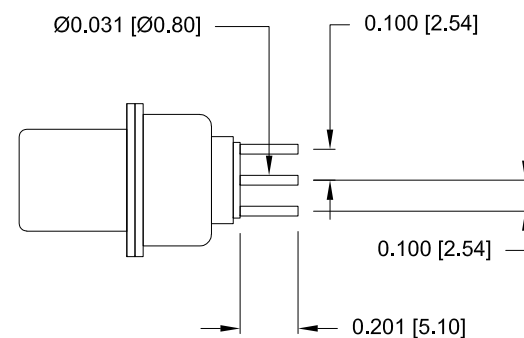
NOTE:  
SIGNAL AND COAXIAL CONTACTS  
COME PRE-LOADED INTO INSULATORS



RECOMMENDED PCB LAYOUT



SIGNAL CONTACTS



75 OHM COAXIAL CONTACT

RoHS COMPLIANT



THESE DRAWINGS AND SPECIFICATIONS ARE THE PROPERTY OF NorComp AND SHALL NOT BE REPRODUCED, COPIED OR USED AS THE BASIS FOR THE MANUFACTURE OR SALE OF APPARATUS WITHOUT WRITTEN PERMISSION.

DRAWN:  
M. SIGMON  
DATE:  
04/04/2016

UNITS = INCHES [MM] DO NOT SCALE FROM DRAWING

NorComp

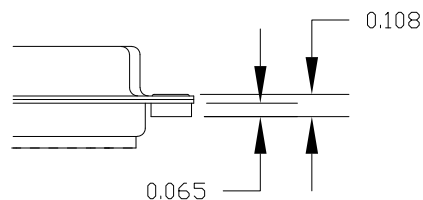
SCALE: NTS	SHEET 2	OF 3	REV 0
683M13W3203SYYY			

DESCRIPTION: CLINCH NUT HARDWARE

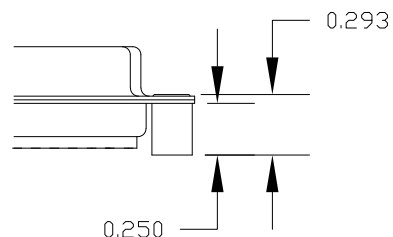
ALL CLINCH-NUTS ARE 4-40 INTERNAL THREADS

TOLERANCE:  
ALL DIMENSIONS ARE  $\pm 0.010$

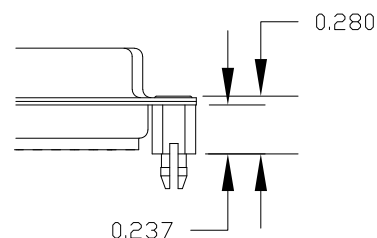
1 ..... 0.065" (BOARD SIDE) - CN1



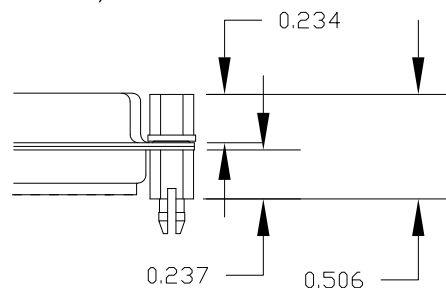
2..... 0.250" (BOARD SIDE) - CN2



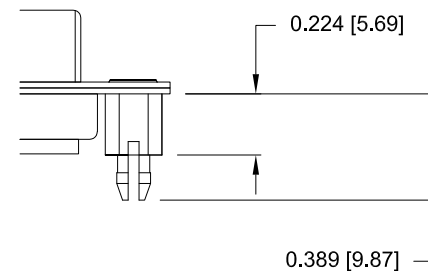
A ..... 0.237" (BOARD SIDE) - CN10



B ..... 0.237" (BOARD SIDE) - 0.197 MATING SIDE - CN10/SFSO4404



5 ..... 0.224" BOARDLOCK, BOARD SIDE



NOTE: 4-40 FEMALE SCREW LOCK IS REMOVABLE

RoHS COMPLIANT



THESE DRAWINGS AND SPECIFICATIONS ARE THE PROPERTY OF NorComp AND SHALL NOT BE REPRODUCED, COPIED OR USED AS THE BASIS FOR THE MANUFACTURE OR SALE OF APPARATUS WITHOUT WRITTEN PERMISSION.

DRAWN:  
M. SIGMON  
DATE:  
04/04/2016

UNITS = INCHES [MM] DO NOT SCALE FROM DRAWING

NorComp

SCALE:  
NTS

SHEET OF  
3 3

REV  
0

683M13W3203SYYY