

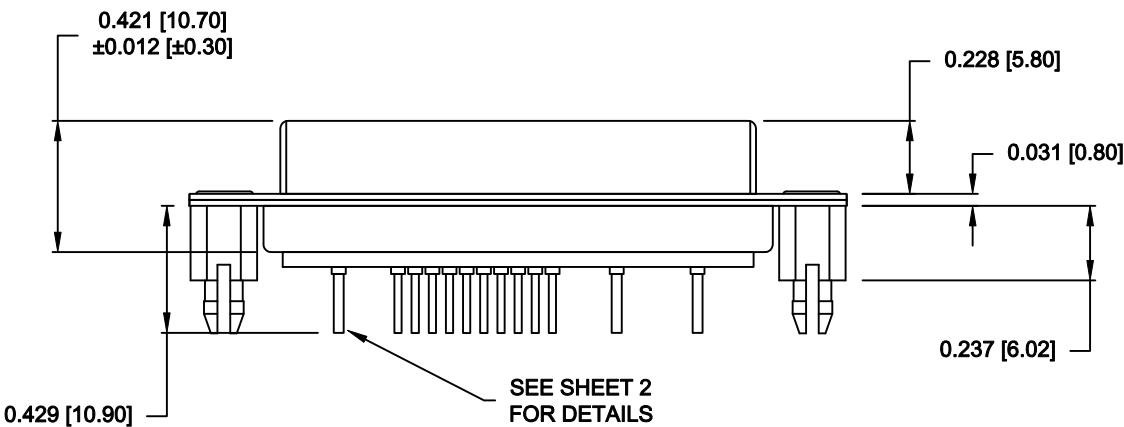
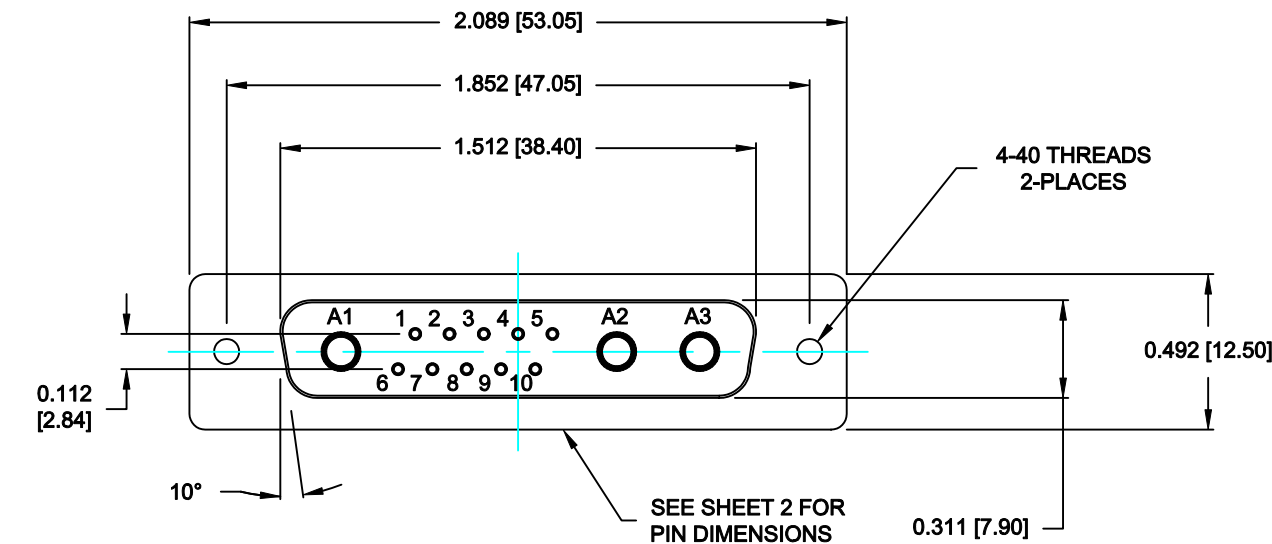
SPECIFICATIONS:

ELECTRICAL:
INSULATOR RESISTANCE: 5 GOHMS Min.
DIELECTRIC WITHSTANDING: 1,000VAC r.m.s.
OPERATING TEMPERATURE: -55° C ~ +125° C
COAXIAL CONTACT IMPEDANCE: 75 OHMS
COAXIAL CONTACT RESISTANCE: 2.7 Milliohms Max.
SIGNAL CONTACT RESISTANCE: 10 Milliohms Max.
SIGNAL PINS: 5 AMPS

MECHANICAL:
CONTACT INSERTION FORCE: 4.5 Kg Max.
CONTACT SEPARATOR FORCE: 0.3Kg Min.

MATERIALS:
CONTACTS: COPPER ALLOY
INSULATOR: PBT UL94V-0 RATED,
230°C PROCESS TEMP.
BLACK
STEEL
BRASS

FINISH:
SHELL: NICKEL
CONTACTS: FULL GOLD FLASH
BOARDLOCK: TIN





683M13W3203S751

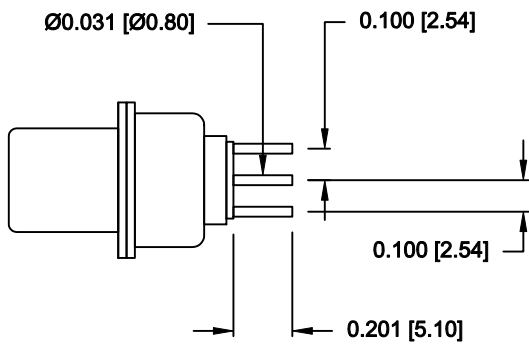
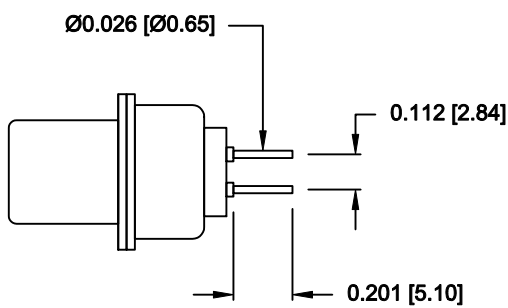
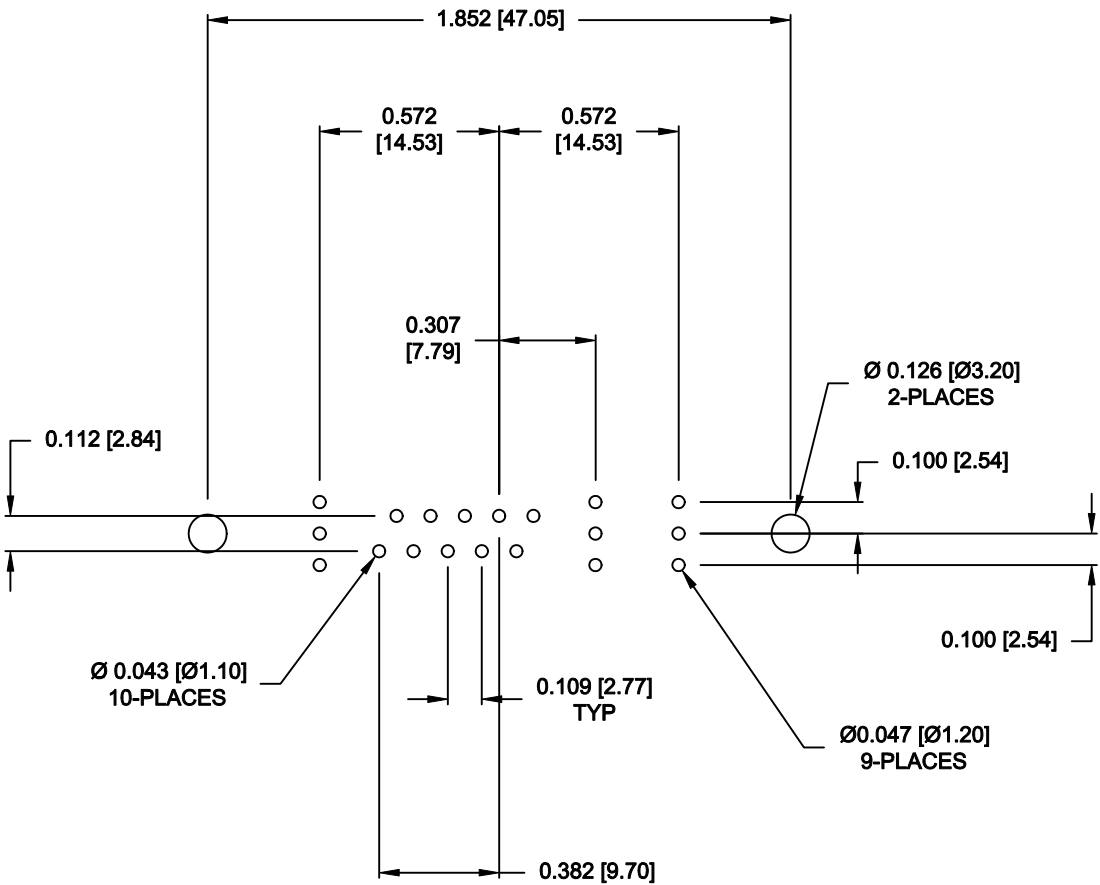
75 = 75 OHM COAXIAL

M = MACHINED CONTACTS


RoHS COMPLIANT

	THESE DRAWINGS AND SPECIFICATIONS ARE THE PROPERTY OF NorComp AND SHALL NOT BE REPRODUCED, COPIED OR USED AS THE BASIS FOR THE MANUFACTURE OF SALE OF APPARATUS WITHOUT WRITTEN PERMISSION.	DRAWN: M. SIGMON		DATE: 04-04-16	
		CHECKED:		DATE:	
		SCALE: N.T.S.	SHEET 1 OF 2		REV 0
		DWG NO. 683M13W3203S751			

NOTE:
SIGNAL AND COAXIAL CONTACTS
COME PRE-LOADED INTO INSULATORS



RoHS COMPLIANT

	THESE DRAWINGS AND SPECIFICATIONS ARE THE PROPERTY OF NorComp AND SHALL NOT BE REPRODUCED, COPIED OR USED AS THE BASIS FOR THE MANUFACTURE OF SALE OF APPARATUS WITHOUT WRITTEN PERMISSION.	DRAWN: M. SIGMON		DATE: 04-04-16		
		CHECKED:		DATE:		
NorComp		SCALE: N.T.S.	SHEET 2		OF 2	REV 0
		DWG NO. 683M13W3203S751				