

DESCRIPTION: COAXIAL / SIGNAL - VERTICAL BOARD - FEMALE - MACHINED

UNITS = INCHES [MM]

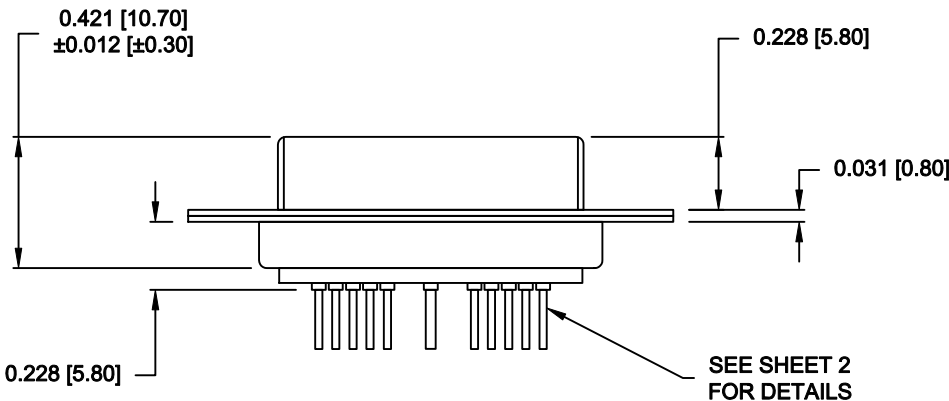
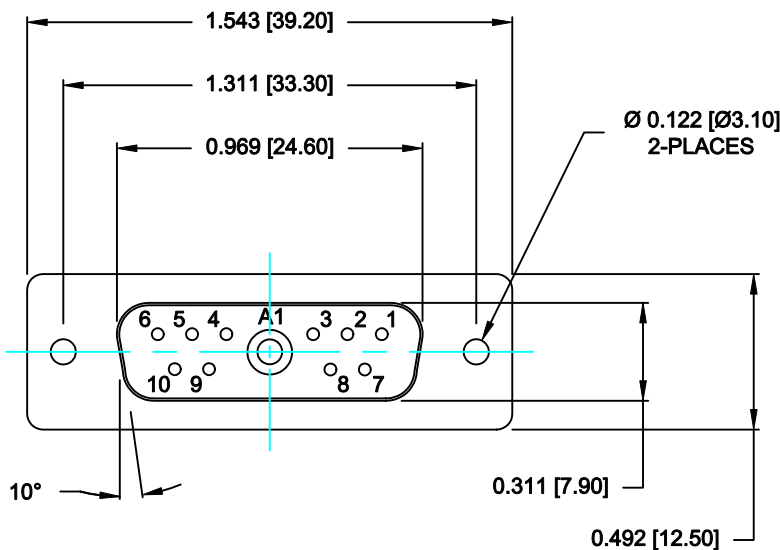
SPECIFICATIONS:

ELECTRICAL:  
INSULATOR RESISTANCE: 5 GOHMS Min.  
DIELECTRIC WITHSTANDING: 1,000VAC r.m.s.  
OPERATING TEMPERATURE: -55° C ~ +125° C  
SIGNAL CONTACT RESISTANCE: 10 MillioHMS Max.  
COAXIAL CONTACT RESISTANCE: 2.7 MillioHMS Max.  
COAXIAL PINS: 50 OHM  
SIGNAL CONTACT CURRENT RATING: 5 AMPS

MECHANICAL:  
CONTACT INSERTION FORCE: 4.5 Kg Max.  
CONTACT SEPARATOR FORCE: 0.3Kg Min.

MATERIALS:  
CONTACTS: BRASS  
INSULATOR: PBT UL94V-0 RATED,  
230°C PROCESS TEMP.  
STEEL


SHELL:  
FINISH:  
SHELL: NICKEL  
CONTACTS: FULL GOLD FLASH



683M11W1203L001

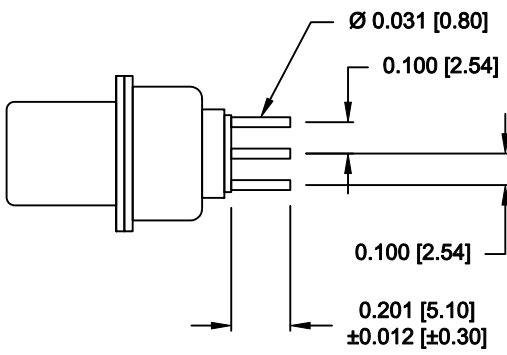
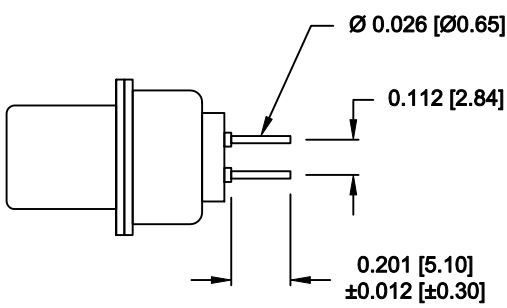
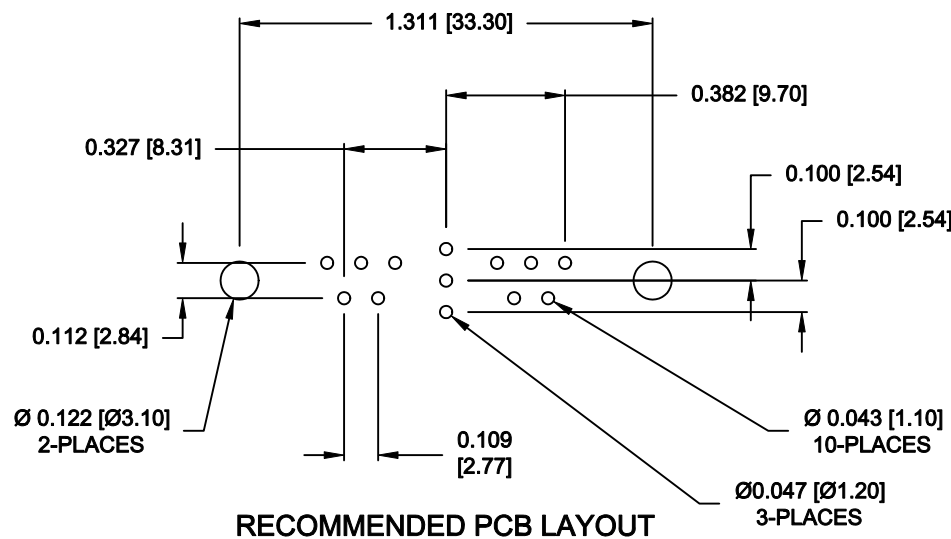
00 = 50 OHM COAXIAL

RoHS COMPLIANT


	THESE DRAWINGS AND SPECIFICATIONS ARE THE PROPERTY OF NorComp AND SHALL NOT BE REPRODUCED, COPIED OR USED AS THE BASIS FOR THE MANUFACTURE OF SALE OF APPARATUS WITHOUT WRITTEN PERMISSION.	DRAWN: <b>M. SIGMON</b>		DATE: <b>03-13-15</b>		
		CHECKED: <b>X</b>		DATE: <b>X</b>		
<b>NorComp</b>	SCALE: <b>N.T.S.</b>		SHEET <b>1</b>		OF <b>2</b>	REV <b>0</b>
	DWG NO. <b>683M11W1203L001</b>					

NorComp

NOTE:  
SIGNAL AND COAXIAL CONTACTS  
COME PRE-LOADED INTO INSULATORS



RoHS COMPLIANT

	THESE DRAWINGS AND SPECIFICATIONS ARE THE PROPERTY OF NorComp AND SHALL NOT BE REPRODUCED, COPIED OR USED AS THE BASIS FOR THE MANUFACTURE OF SALE OF APPARATUS WITHOUT WRITTEN PERMISSION.	DRAWN: <b>M. SIGMON</b>		DATE: <b>03-13-15</b>	
		CHECKED: <b>X</b>		DATE: <b>X</b>	
<b>NorComp</b>	SCALE: <b>N.T.S.</b>		SHEET <b>2</b>		OF <b>2</b>
	DWG NO.		<b>683M11W1203L001</b>		
		REV <b>0</b>			