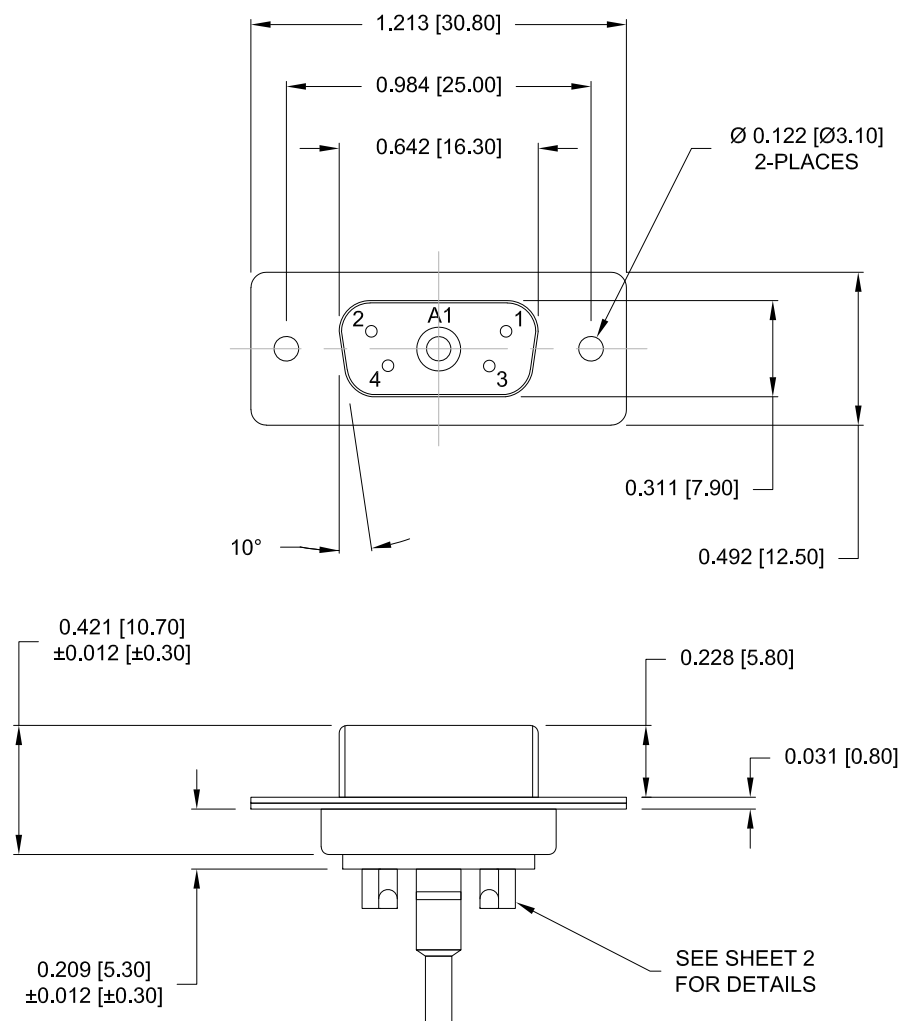


DESCRIPTION: 5W1 // F // COAXIAL // SIGNAL // CBL MNT



## SPECIFICATIONS:

**ELECTRICAL:**

INSULATOR RESISTANCE:	5 GOHMS Min.
WORKING VOLTAGE:	250V
OPERATING TEMPERATURE:	-55° C ~ +125° C
SIGNAL CONTACT RESISTANCE:	10 MillioHMS Max.
SIGNAL CURRENT RATING:	5 AMPS
COAXIAL CONTACT RESISTANCE:	2.7 MillioHMS Max.
COAXIAL PIN:	SEE PART NUMBER KEY

MECHANICAL:

CONTACT INSERTION FORCE: 4.5 Kg Max.  
CONTACT SEPARATOR FORCE: 0.3Kg Min.

**MATERIALS:**

CONTACTS:	COPPER ALLOY
INSULATOR:	PBT UL94V-0 RATED, 230°C PROCESS TEMP.
SHELL:	STEEL

FINISH:

SHELL: NICKEL  
CONTACTS: FULL GOLD FLASH

682M5W1203L YYY

0 = 50 OHM  
(CONTACT NORCOMP) 7 = 75 OHM

1 = Gold Flash

0 = NO HARDWARE  
1 = 0.098" CN PCB SIDE  
2 = 0.236" CN PCB SIDE  
3 = 0.236" CN MATING SIDE

# RoHS COMPLIANT

UNITS = INCHES [MM] DO NOT SCALE FROM DRAWING



THESE DRAWINGS AND SPECIFICATIONS ARE THE PROPERTY OF NorComp AND SHALL NOT BE REPRODUCED, COPIED OR USED AS THE BASIS FOR THE MANUFACTURE OR SALE OF APPARATUS WITHOUT WRITTEN PERMISSION.

DRAWN:  
M. SIGMON

DATE: 09/18/2014

# NorComp

SCALE:  
NTS

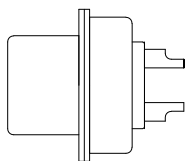
SHEET 1 OF 3

REV  
1

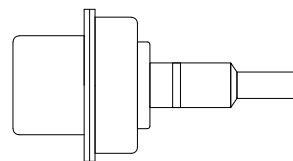
DWG NO: 682M5W1203L001

NOTE:

- COAXIAL CONTACTS SUPPLIED - NOT PRE-LOADED
- PLEASE SEE NORCOMP 682M SERIES WEBSITE PRODUCT PAGE FOR ASSEMBLY INSTRUCTION PDF AND INDIVIDUAL CONTACT DRAWING PDFS



SIGNAL CONTACTS  
ACCEPTS UP TO 20 AWG WIRE



50 OHM COAXIAL CONTACT\*  
ACCEPTS 50 OHM COAX, RG316/RG174  
\*75 OHM (CONTACT NORCOMP)

RoHS COMPLIANT

UNITS = INCHES [MM] DO NOT SCALE FROM DRAWING



THESE DRAWINGS AND SPECIFICATIONS ARE THE PROPERTY OF NorComp AND SHALL NOT BE REPRODUCED, COPIED OR USED AS THE BASIS FOR THE MANUFACTURE OR SALE OF APPARATUS WITHOUT WRITTEN PERMISSION.

DRAWN:  
M. SIGMON

DATE:  
09/18/2014

**NorComp**

SCALE:  
NTS

SHEET OF  
2 3

REV  
1

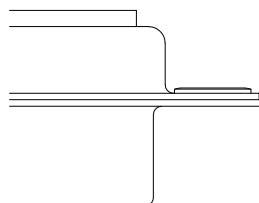
DWG NO: 682M5W1203L001

TOLERANCE:

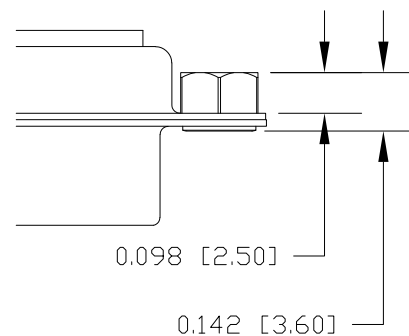
ALL DIMENSIONS ARE  $\pm 0.010$ 

## ALL CLINCH-NUTS ARE 4-40 INTERNAL THREADS

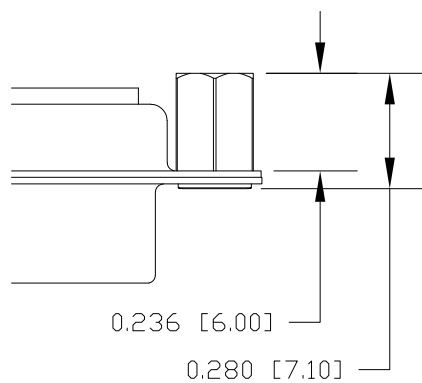
0 ..... NO HARDWARE



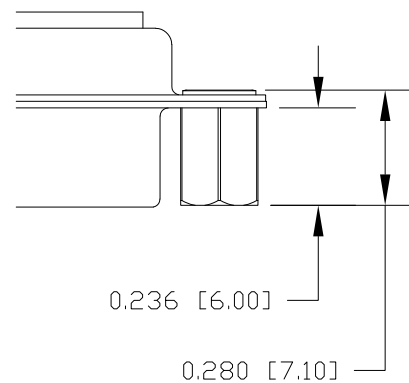
1 ..... 0.098" PCB SIDE



2 ..... 0.236" PCB SIDE



3 ..... 0.236" MATING SIDE



RoHS COMPLIANT



THESE DRAWINGS AND SPECIFICATIONS ARE THE PROPERTY OF NorComp AND SHALL NOT BE REPRODUCED, COPIED OR USED AS THE BASIS FOR THE MANUFACTURE OR SALE OF APPARATUS WITHOUT WRITTEN PERMISSION.

DRAWN:

M. SIGMON

DATE:

09/18/2014

UNITS = INCHES [MM] DO NOT SCALE FROM DRAWING

NorComp

SCALE:

NTS

SHEET

3

OF

3

REV

1

DWG NO:

682M5W1203L001