

SPECIFICATIONS:

ELECTRICAL:
INSULATOR RESISTANCE: 5,000 MegOHMS Min.
DIELECTRIC WITHSTANDING: 1,000VAC r.m.s.
OPERATING TEMPERATURE: -55° C ~ +125° C
CONTACT RESISTANCE: 30 MilliOHMS Max.
POWER PINS: SEE PART No. BELOW
SIGNAL PINS: 3 AMPS

MECHANICAL:
CONTACT INSERTION FORCE: 4.5 Kg Max.
CONTACT SEPARATOR FORCE: 0.3Kg Min.


MATERIALS:
CONTACTS: BRASS
INSULATOR: PBT UL94V-0 RATED,
230°C PROCESS TEMP.
STEEL

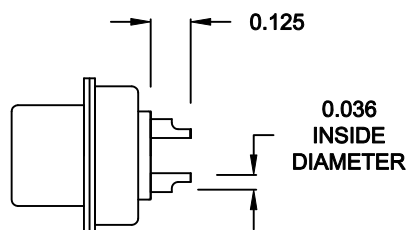
SHELL:
FINISH:
SHELL: NICKEL

6809W4203LYY1

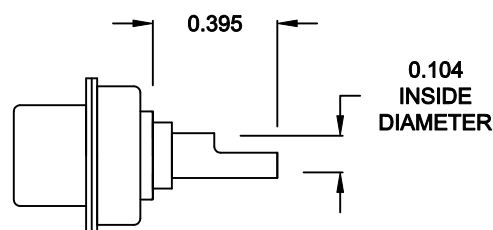
20 = 20 AMPS
40 = 40 AMPS

RoHS COMPLIANT

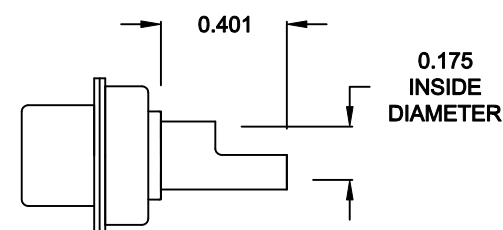
	THESE DRAWINGS AND SPECIFICATIONS ARE THE PROPERTY OF NorComp AND SHALL NOT BE REPRODUCED, COPIED OR USED AS THE BASIS FOR THE MANUFACTURE OF SALE OF APPARATUS WITHOUT WRITTEN PERMISSION.		DRAWN: M. SIGMON		DATE: 11-23-10	
	<h1>NorComp</h1>		CHECKED:		DATE:	
			SCALE: N.T.S.		SHEET 1 OF 2	
		DWG NO.		6809W4203LYY1		
				REV 2		



SIGNAL CONTACTS
ACCEPTS UP TO 20 AWG WIRE




**20 AMP POWER CONTACTS
ACCEPTS UP TO 12 AWG WIRE**



**40 AMP POWER CONTACTS
ACCEPTS UP TO 8 AWG WIRE**

RoHS COMPLIANT

	THESE DRAWINGS AND SPECIFICATIONS ARE THE PROPERTY OF NorComp AND SHALL NOT BE REPRODUCED, COPIED OR USED AS THE BASIS FOR THE MANUFACTURE OF SALE OF APPARATUS WITHOUT WRITTEN PERMISSION.	DRAWN: <div>C. SMITH</div>		DATE: <div>09-07-06</div>	
		CHECKED:		DATE:	
<div>NorComp</div>		SCALE: <div>N.T.S.</div>	SHEET OF <div>2 2</div>		REV <div>2</div>
		DWG NO. 6809W4203LYY1			