

DESCRIPTION: MACHINED MICRO-D // RIGHT ANGLE SOLDER // FEMALE

**SPECIFICATIONS:**

**MATERIALS:**

INSULATOR: LCP, UL94 V-0, BLACK  
 CONTACTS: 15µ" GOLD PLATED BRASS MATING AREA  
 60µ" TIN PLATED BRASS SOLDER AREA  
 FRONT SHELL: NICKEL PLATED STEEL 60µ"-100µ"  
 BACK SHELL: NICKEL PLATED BRASS 60µ"-100µ"  
 BOARD LOCK: NICKEL PLATED BRASS 60µ"-100µ"

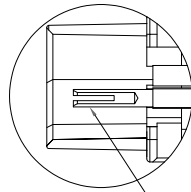
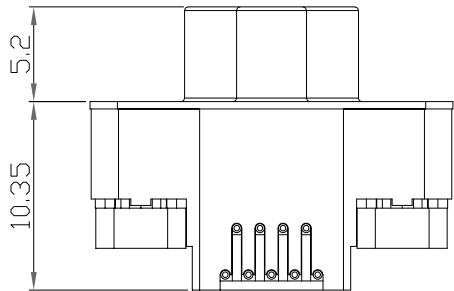
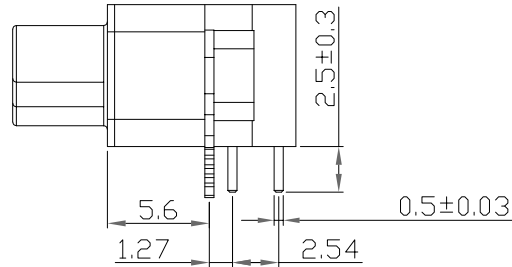
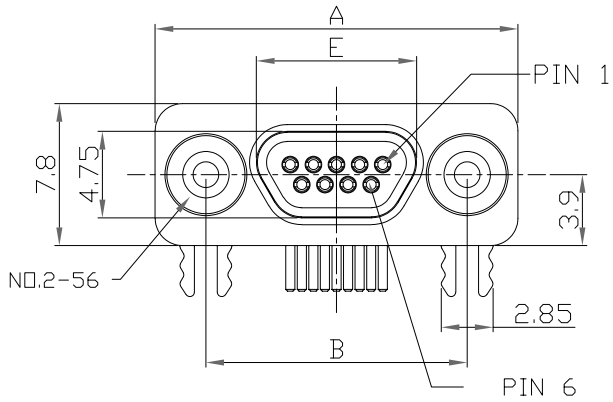
**ELECTRICAL:**

RATED CURRENT: 2A  
 RATED VOLTAGE: 60VDC  
 D.W.V.: 630 VAC for 1 min.  
 INSULATION RESISTANCE: 1000 MOhms MIN.  
 CONTACT RESISTANCE: 30 mOhms MAX.

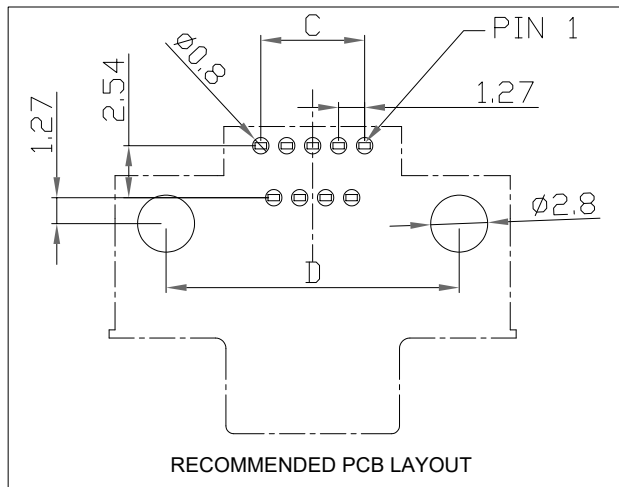
**ENVIRONMENT:**

OPERATING TEMPERATURE: -40°C TO +125°C  
 PROCESS TEMPERATURE: 260°C

\*NOT DESIGNED TO MATE WITH NORCOMP 380 // 381 // 960 SERIES & NORCOMP MICRO-D CABLE ASSEMBLIES USING THE 960 SERIES CONNECTORS.  
 \*\*DESIGNED TO MATE WITHIN NORCOMP 58Y-M SERIES MICRO-D CONNECTORS



EXPOSED TULIP CONTACT



RECOMMENDED PCB LAYOUT

DIMENSIONS(mm)

SIZE	A	B	C	D	E
9	19.93	14.35	5.08	14.35	8.80
15	23.75	18.20	8.89	18.16	12.60
25	30.10	24.55	15.24	24.51	18.95

581-MYY-213L461

SERIES 581 = MACHINED MICRO-D  
 MACHINED  
 POSITIONS 09, 15, 25  
 GENDER 2 = FEMALE - "TULIP" CONTACTS  
 RIGHT ANGLE SOLDER TERMINATION  
 CONTACT PLATING OPTIONS  
 1 = 15µ" GOLD PLATING  
 2 = 30µ" GOLD PLATING

RoHS COMPLIANT

UNITS = mm

DO NOT SCALE FROM DRAWING



THESE DRAWINGS AND SPECIFICATIONS ARE THE PROPERTY OF NorComp AND SHALL NOT BE REPRODUCED, COPIED OR USED AS THE BASIS FOR THE MANUFACTURE OR SALE OF APPARATUS WITHOUT WRITTEN PERMISSION.

DRAWN: J. KADEL  
 DATE: 05/14/2020

TOLERANCES  
 .x ±0.20  
 .xx ±0.15  
 .xxx ±0.10  
 .xxxx ±0.05  
 ANGULAR ±1°

NorComp

SCALE: NTS SHEET 1 OF 1 REV 8

DWG NO. 581-MYY-213L461