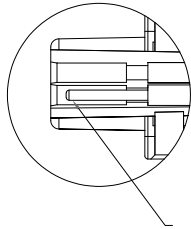
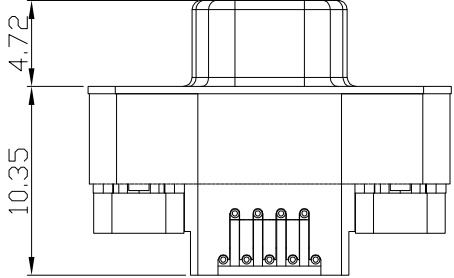
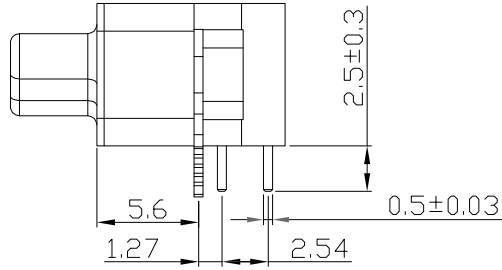
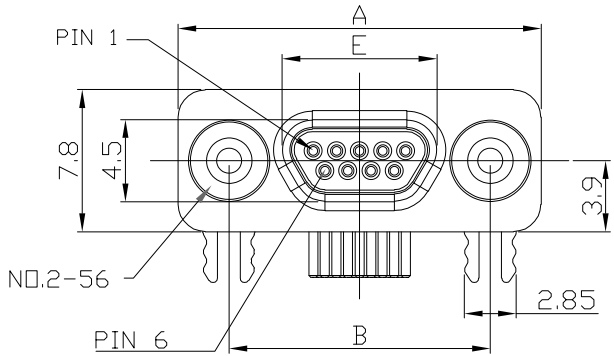
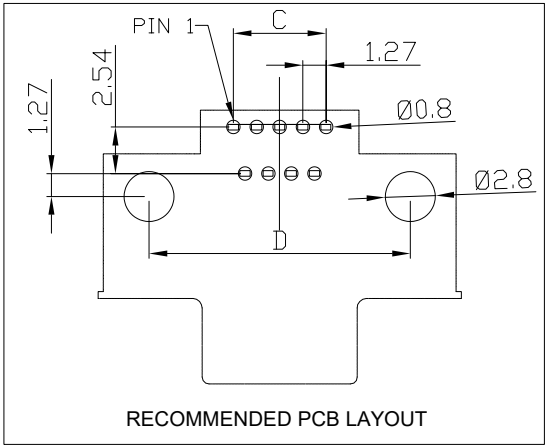


DESCRIPTION: MACHINED MICRO-D // RIGHT ANGLE SOLDER // MALE



NESTED
PLUG
CONTACT



RECOMMENDED PCB LAYOUT

SPECIFICATIONS:

MATERIALS:

INSULATOR:	LCP, UL94 V-0, BLACK
CONTACTS:	15µ" GOLD PLATED BRASS MATING AREA 60µ" TIN PLATED BRASS SOLDER AREA
FRONT SHELL:	NICKEL PLATED STEEL 60µ"-100µ"
BACK SHELL:	NICKEL PLATED BRASS 60µ"-100µ"
BOARD LOCK:	NICKEL PLATED BRASS 60µ"-100µ"

ELECTRICAL:

RATED CURRENT:	2A
RATED VOLTAGE:	60VDC
INSULATION RESISTANCE:	1000 MOhms MIN.
CONTACT RESISTANCE:	30 mOhms MAX.

ENVIRONMENT:

OPERATING TEMPERATURE:	-40°C TO +125°C
PROCESS TEMPERATURE:	260°C

*NOT DESIGNED TO MATE WITH NORCOMP 380 // 381 // 960 SERIES & NORCOMP MICRO-D CABLE ASSEMBLIES USING THE 960 SERIES CONNECTORS.
**DESIGNED TO MATE WITHIN NORCOMP 58Y-M SERIES MICRO-D CONNECTORS

DIMENSIONS(mm)					
SIZE	A	B	C	D	E
9	19.93	14.35	5.08	14.35	8.30
15	23.75	18.20	8.89	18.16	12.20
25	30.10	24.55	15.24	24.51	18.55

581-MYY-113L461

SERIES — 581 = MACHINED MICRO-D
MACHINED —
POSITIONS — 09
15
25
GENDER — 1 = MALE - SOLID PIN CONTACTS
RIGHT ANGLE SOLDER TERMINATION —
CONTACT PLATING OPTIONS —
1 = 15u" GOLD PLATING
2 = 30u" GOLD PLATING

RoHS COMPLIANT



THESE DRAWINGS AND SPECIFICATIONS ARE THE PROPERTY OF NorComp AND SHALL NOT BE REPRODUCED, COPIED OR USED AS THE BASIS FOR THE MANUFACTURE OR SALE OF APPARATUS WITHOUT WRITTEN PERMISSION.

DRAWN:
J. KADEL
DATE:
05/14/2020

TOLERANCES
.x ±0.20
.xx ±0.15
.xxx ±0.10
.xxxx ±0.05
ANGULAR ±1°

UNITS = mm

NorComp

DO NOT SCALE FROM DRAWING

SCALE: NTS	SHEET 1	OF 1	REV 6
DWG NO. 581-MYY-113L461			