

DESCRIPTION: SOLID BARREL MICRO-D // SOLDER CUP // FEMALE

SPECIFICATIONS:

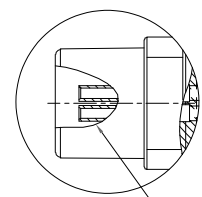
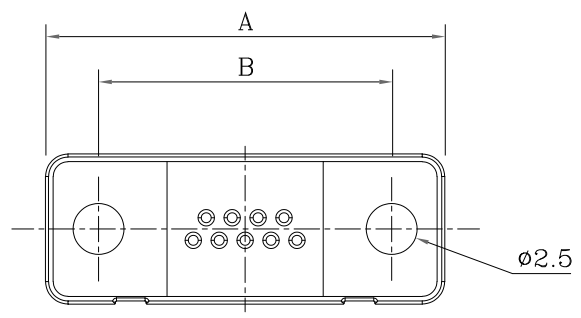
MATERIALS:
 INSULATOR: PBT, UL94 V-0, BLACK
 CONTACTS: 15µ" GOLD PLATED PHOSPHOR BRONZE
 SHELL: NICKEL PLATED ZINC ALLOY 60µ"-100µ"

ELECTRICAL:
 RATED CURRENT: 2A
 RATED VOLTAGE: 60VDC
 D.W.V.: 6000 VAC for 1 min.
 INSULATION RESISTANCE: 1000 MOhms MIN.
 CONTACT RESISTANCE: 30 mOhms MAX.

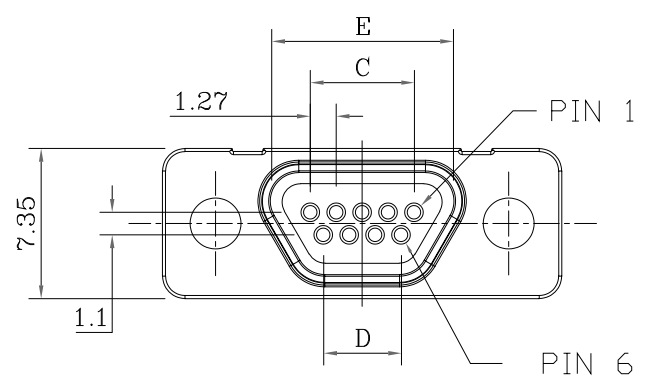
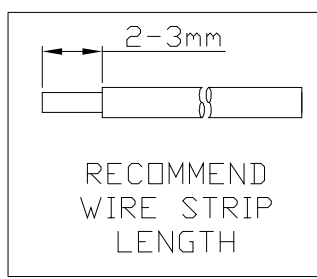
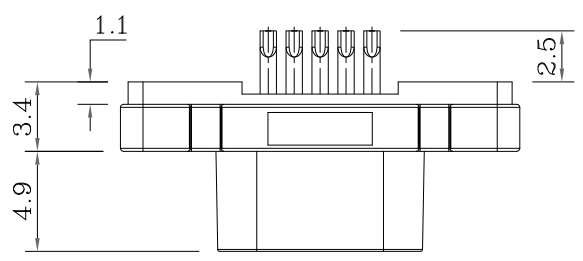
ENVIRONMENT:
 OPERATING TEMPERATURE: -40°C TO +85°C

WIRE AWG: 28 AWG MAX

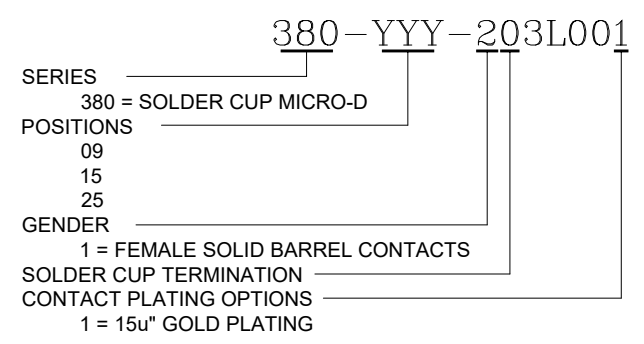
*NOT DESIGNED TO MATE WITH NORCOMP 580-M & 581-M SERIES CONNECTORS.
 **DESIGNED TO MATE WITH NORCOMP 380 // 381 SERIES CONNECTORS.



NESTED
SOLID BARREL
CONTACT



DIMENSIONS(mm)					
SIZE	A	B	C	D	E
9	19.55	14.35	5.08	3.81	8.90
15	23.36	18.20	8.89	7.62	12.60
25	29.70	24.55	15.24	13.97	19.20



RoHS COMPLIANT



THESE DRAWINGS AND SPECIFICATIONS ARE THE PROPERTY OF NorComp AND SHALL NOT BE REPRODUCED, COPIED OR USED AS THE BASIS FOR THE MANUFACTURE OR SALE OF APPARATUS WITHOUT WRITTEN PERMISSION.

DRAWN: J. KADEL
 DATE: 01/17/2025

TOLERANCES
 .x ±0.20
 .xx ±0.15
 .xxx ±0.10
 .xxxx ±0.05
 ANGULAR ±1°

UNITS = mm

DO NOT SCALE FROM DRAWING



SCALE: NTS
 SHEET 1 OF 1
 REV 0
 DWG NO. 380-YYY-203L001