

DESCRIPTION: SPRING PIN MICRO-D // SOLDER CUP // MALE

SPECIFICATIONS:

MATERIALS:

INSULATOR: PBT, UL94 V-0, BLACK
 CONTACTS: 15µ" GOLD PLATED PHOSPHOR BRONZE MATING AREA
 60µ" TIN PLATED PHOSPHOR BRONZE SOLDER AREA
 SHELL: NICKEL PLATED ZINC ALLOY 60µ"-100µ"

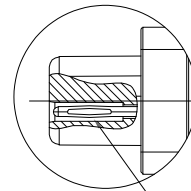
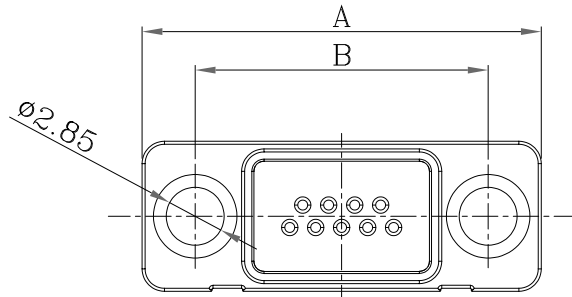
ELECTRICAL:

RATED CURRENT: 2A
 RATED VOLTAGE: 60VDC
 D.W.V.: 6000 VAC for 1 min.
 INSULATION RESISTANCE: 1000 MOhms MIN.
 CONTACT RESISTANCE: 30 mOhms MAX.

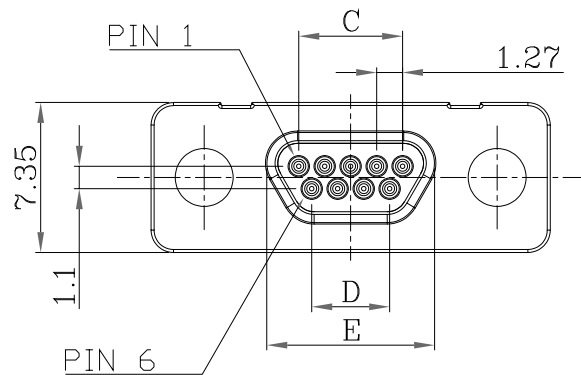
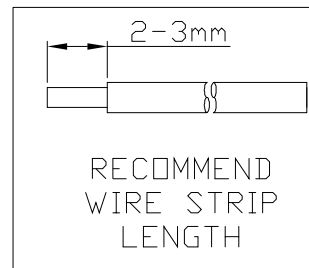
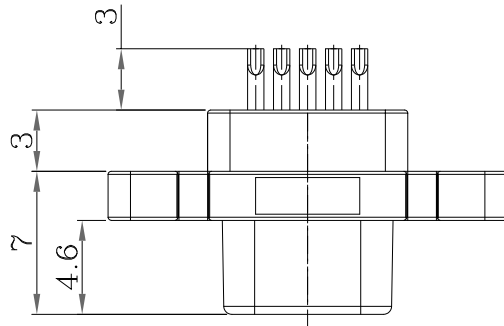
ENVIRONMENT:

OPERATING TEMPERATURE: -40°C TO +85°C

WIRE AWG: 28 AWG MAX

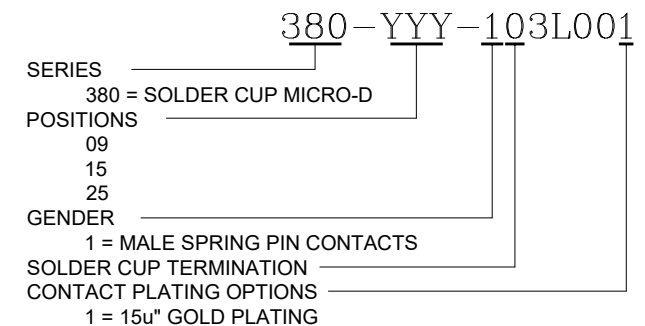


NESTED
 SPRING PIN
 CONTACT



*NOT DESIGNED TO MATE WITH NORCOMP 580-M & 581-M SERIES CONNECTORS.
 **DESIGNED TO MATE WITH NORCOMP 380 // 381 // 960 SERIES & NORCOMP MICRO-D CABLE ASSEMBLIES USING THE 960 SERIES CONNECTORS.

DIMENSIONS(mm)					
SIZE	A	B	C	D	E
9	19.55	14.35	5.08	3.81	8.20
15	23.36	18.20	8.89	7.62	12.00
25	29.70	24.55	15.24	13.97	18.35



RoHS COMPLIANT



THESE DRAWINGS AND SPECIFICATIONS ARE THE PROPERTY OF NorComp AND SHALL NOT BE REPRODUCED, COPIED OR USED AS THE BASIS FOR THE MANUFACTURE OR SALE OF APPARATUS WITHOUT WRITTEN PERMISSION.

DRAWN: J. KADEL
 DATE: 01/17/2025

TOLERANCES
 .x ±0.20
 .xx ±0.15
 .xxx ±0.10
 .xxxx ±0.05
 ANGULAR ±1°

UNITS = mm

DO NOT SCALE FROM DRAWING

NorComp

SCALE: NTS SHEET 1 OF 1 REV 1
 DWG NO. 380-YYY-103L001