

DSSK-M Series

Metallised Plastic Hood & D-Sub Connector Kit | S&F

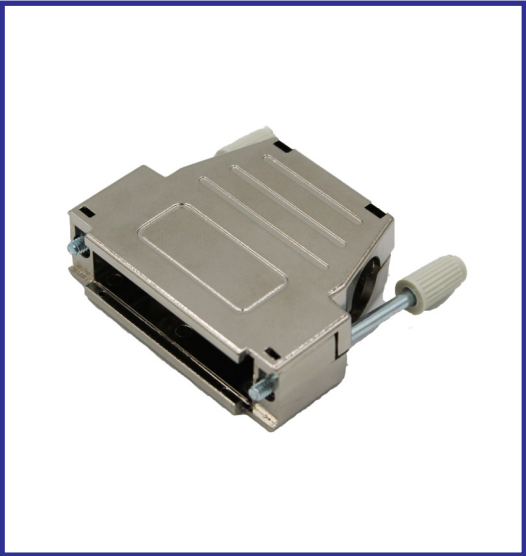
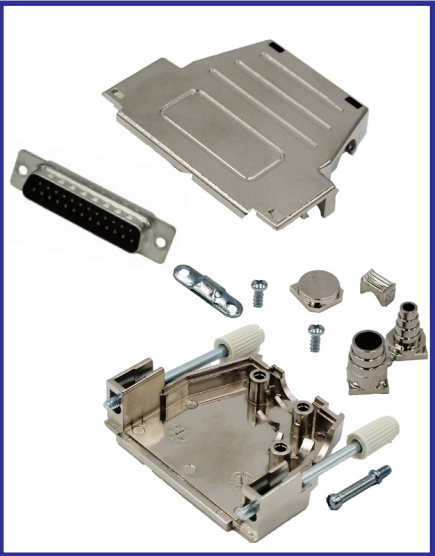


Description

- Stamped & Formed D-Sub contacts, selective Gold plated contacts, Tin plated solder buckets
- Metallised plastic clamshell design
- Quick snap together locking system
- Straight cable entry
- Will accommodate up to 11.5mm diameter cable
- Cable clamp is secured with 2 screws
- 4-40 UNC jackscrews

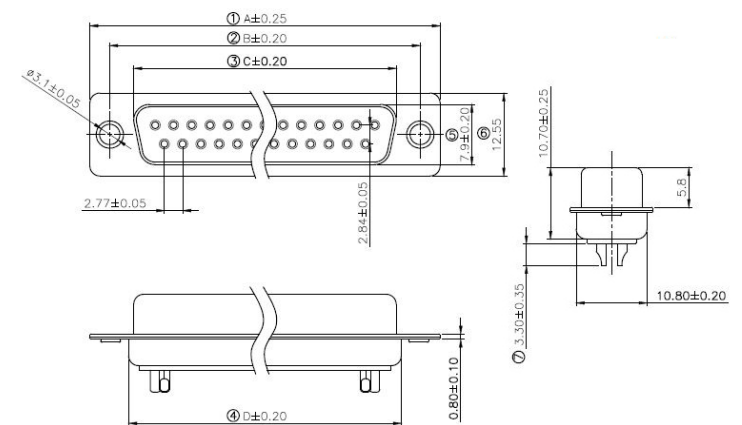
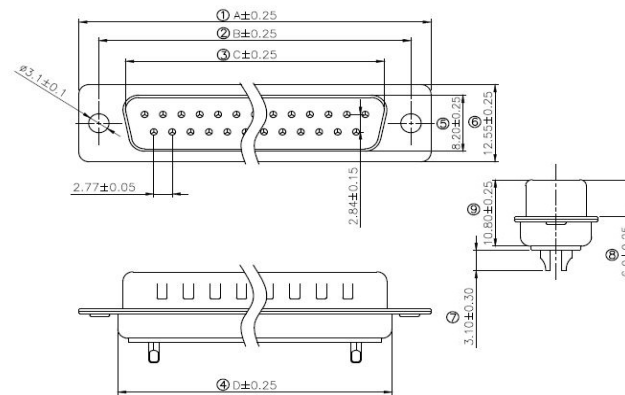
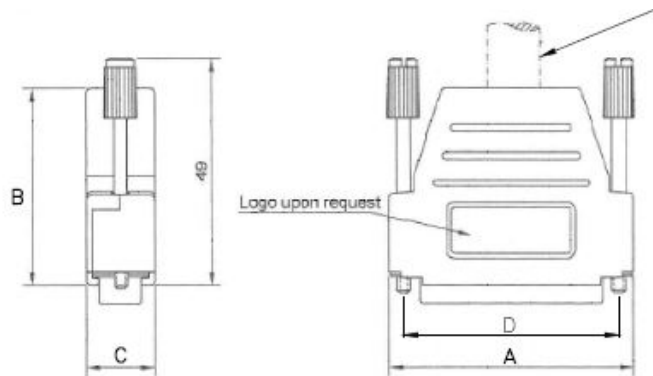
Specification

D-Sub	
Voltage Rating	250V
Current Rating	5 Amps
Contact Resistance	25mΩ Max
Insulation Resistance	1000MΩ
Operating Temperature	-55°C to 110°C
Shell	Tin plated Steel
Insulator Material	Glass filled Polyester
Contact Material	Copper alloy
Contact Plating	Selective Gold over Nickel, solder bucket: Tin plated



Hood	
No. Contacts	9, 15 & 25
Kit Type	D-Sub connector kit
Housing Material	UL Recognised ABS
Cable Entry	Straight & Side
Cable OD	Up to 11.5mm

The Kit Contains	
Backshell Halves	x 2
D-Sub connector	x 1
Strain relief screws	x 2
Jackscrew post	x 1
4-40 UNC jackscrews	x 2
Metallised plastic compression inserts	x 1
Blanking plate	x 1



Hood Dimensions

Size	A	B	C	D
09	31.5mm	40.0mm	15.00mm	24.99mm
	1.240"	1.575"	0.591"	0.984"
15	40.00mm	40.0mm	15.00mm	33.32mm
	1.575"	1.575"	0.591"	1.312"
25	53.5mm	43.0mm	15.00mm	47.04mm
	2.106"	1.693"	0.591"	1.852"

Male Dimensions

	09	15	25
A	30.81mm	39.25mm	53.03mm
B	24.99mm	33.32mm	38.96mm
C	19.28mm	27.75mm	41.30mm
D	19.23mm	27.56mm	41.30mm

Female Dimensions

	09	15	25
A	30.88mm	39.20mm	53.02mm
B	24.88mm	33.30mm	47.04mm
C	19.28mm	27.75mm	41.30mm
D	18.94mm	27.50mm	41.20mm

Part No.	Norcomp Part No.	Positions	Male/Female	Contact Type	Hood Part No.	Norcomp Part No.	D-Sub Part No.	Norcomp Part No.
DSSKM9L-DB9P-K	999-009-D20S102	9 Pin	Male	Stamped & Formed	DSSKM9LK	965-009-020R121	MHDB9SP	171-009-102L001
DSSKM15L-DB15P-K	999-015-D20S102	15 Pin	Male	Stamped & Formed	DSSKM15LK	965-015-020R121	MHDB15SP	171-015-102L001
DSSKM25L-DB25P-K	999-025-D20S102	25 Pin	Male	Stamped & Formed	DSSKM25LK	965-025-020R121	MHDB25SP	171-025-102L001
DSSKM9L-DB9S-K	999-009-D20S202	9 Pin	Female	Stamped & Formed	DSSKM9LK	965-009-020R121	MHDB9SS	171-009-202L001
DSSKM15L-DB15S-K	999-015-D20S202	15 Pin	Female	Stamped & Formed	DSSKM15LK	965-015-020R121	MHDB15SS	171-015-202L001
DSSKM25L-DB25S-K	999-025-D20S202	25 Pin	Female	Stamped & Formed	DSSKM25LK	965-025-020R121	MHDB25SS	171-025-202L001