

# MHDTZI Series

## Diecast & D-Sub Connector Kit | Machined

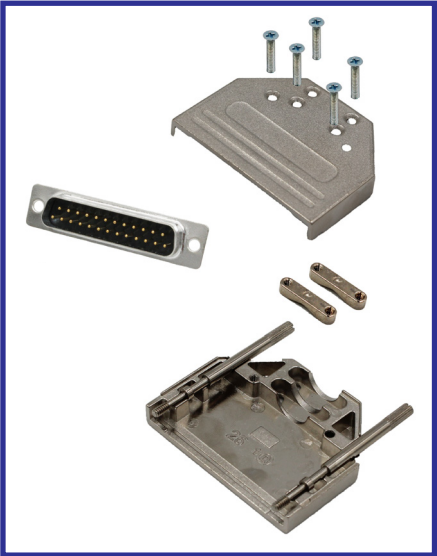


### Description

- Machined D-Sub connector, solder bucket contacts, Gold plated all over
- Strong Nickel plated, diecast Zinc hood
- Re-openable
- Straight cable entry
- Two strain relief clamps, secured with 4 screws for added security
- Will accommodate up to 13.0mm diameter cable
- 4-40 UNC jackscrews

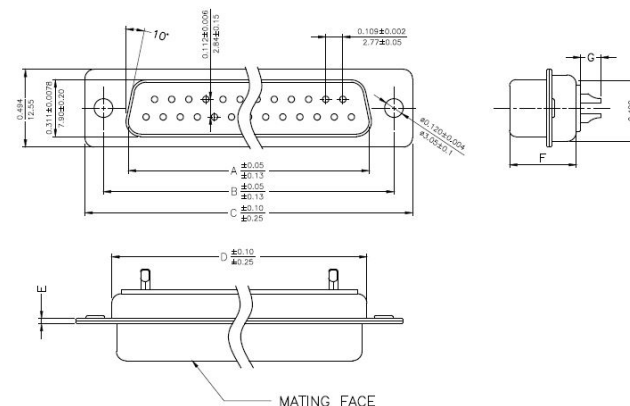
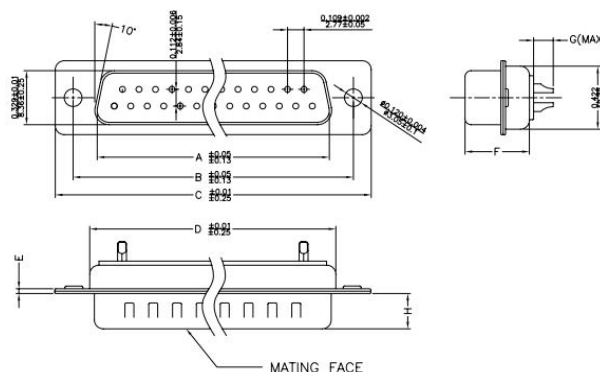
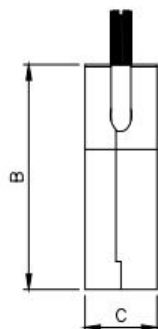
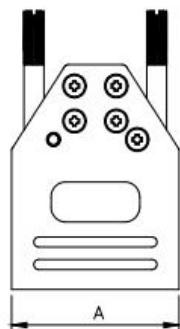
### Specification

D-Sub	
Voltage Rating	250V
Current Rating	5 Amps
Contact Resistance	25mΩ Max
Insulation Resistance	1000MΩ
Operating Temperature	-55°C to 105°C
Shell	Tin plated Steel
Insulator Material	Glass filled Polyester
Contact Material	Copper alloy
Contact Plating	Gold over Nickel



Hood	
No. Contacts	9, 15 & 25
Kit Type	D-Sub connector kit
Housing Material	Nickel plated Zinc
Cable Entry	Straight
Cable OD	Up to 13.0mm

The Kit Contains	
Backshell Halves	x2
Strain relief screws	x4
Housing screws	x2
4-40 UNC jackscrews	x2
Metallised plastic compression inserts	x1



### Hood Dimensions

Size	A	B	C	D
09	34.0mm	45.0mm	14.6mm	24.99mm
	1.34"	1.77"	0.57"	0.984"
15	43.0mm	45.0mm	14.6mm	33.32mm
	1.69"	1.77"	0.57"	1.312"
25	56.5mm	45.0mm	14.6mm	47.04mm
	2.22"	1.77"	0.57"	1.852"

### Male Dimensions

	09	15	25
A	16.92mm	25.25mm	38.96mm
B	24.99mm	33.32mm	47.04mm
C	30.81mm	39.14mm	53.04mm
D	19.23mm	27.56mm	41.30mm
E	1.0mm	1.0mm	1.0mm
F	10.8mm	10.8mm	10.8mm
G	2.7mm	2.7mm	2.7mm
H	5.84mm	5.84mm	5.84mm

### Female Dimensions

	09	15	25
A	16.33mm	24.66mm	38.38mm
B	24.99mm	33.32mm	47.04mm
C	30.81mm	39.14mm	53.04mm
D	19.28mm	27.51mm	41.30mm
E	1.0mm	1.0mm	1.0mm
F	10.8mm	10.8mm	10.8mm
G	2.30mm	2.30mm	2.30mm

Part No.	Norcomp Part No.	Positions	Male/Female	Contact Type	Hood Part No.	Norcomp Part No.	D-Sub Part No.	Norcomp Part No.
MHDTZI9-DM9P-K	999-009-A30M102	9 Pin	Male	Machined	MHDTZI9-K	961-009-030R121	MHDM9SP	172-009-102R001
MHDTZI15-DM15P-K	999-015-A30M102	15 Pin	Male	Machined	MHDTZI15-K	961-015-030R121	MHDM15SP	172-015-102R001
MHDTZI25-DM25P-K	999-025-A30M102	25 Pin	Male	Machined	MHDTZI25-K	961-025-030R121	MHDM25SP	172-025-102R001
MHDTZI9-DM9S-K	999-009-A30M202	9 Pin	Female	Machined	MHDTZI9-K	961-009-030R121	MHDM9SS	172-009-202R001
MHDTZI15-DM15S-K	999-015-A30M202	15 Pin	Female	Machined	MHDTZI15-K	961-015-030R121	MHDM15SS	172-015-202R001
MHDTZI25-DM25S-K	999-025-A30M202	25 Pin	Female	Machined	MHDTZI25-K	961-025-030R121	MHDM25SS	172-025-202R001