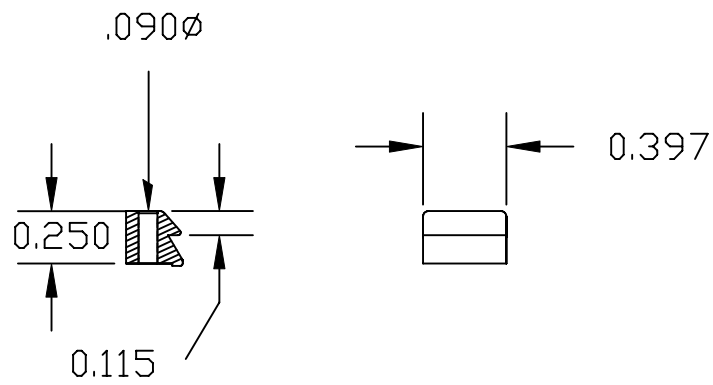


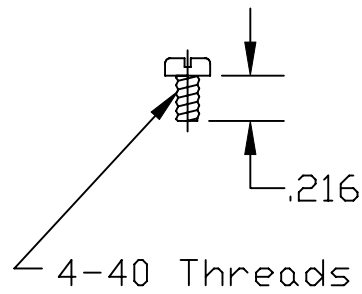
DESCRIPTION:

Material: Polyester



Latch Lock = 160-000-007R0P1 (PLASTIC)  
Latch Lock = 160-000-007R0M1 (METAL)  
Supplied 1 per  
(2 required per connector assembly)

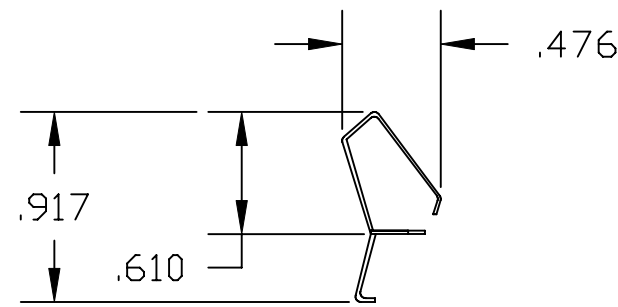
Material: Steel



Mounting Screw = 160-000-009R0S1  
(2 required per connector assembly)

# RoHS COMPLIANT

Material: Spring Steel



Spring Clip = 160-000-008R0S1  
(2 required per connector assembly)

Note: Each item must be purchased separately  
and in quantities of 1 per.



THESE DRAWINGS AND SPECIFICATIONS  
ARE THE PROPERTY OF NorComp AND  
SHALL NOT BE REPRODUCED, COPIED  
OR USED AS THE BASIS FOR THE  
MANUFACTURE OF SALE OF APPARATUS  
WITHOUT WRITTEN PERMISSION.

DRAWN:  
PAM JENKINS

DATE:  
2-22-01

CHECKED:

DATE:

# NorComp

SCALE:

SHEET 1 OF 1

REV 3

DWG NO.

Spring Clip Hardware for 982 Series Backshell