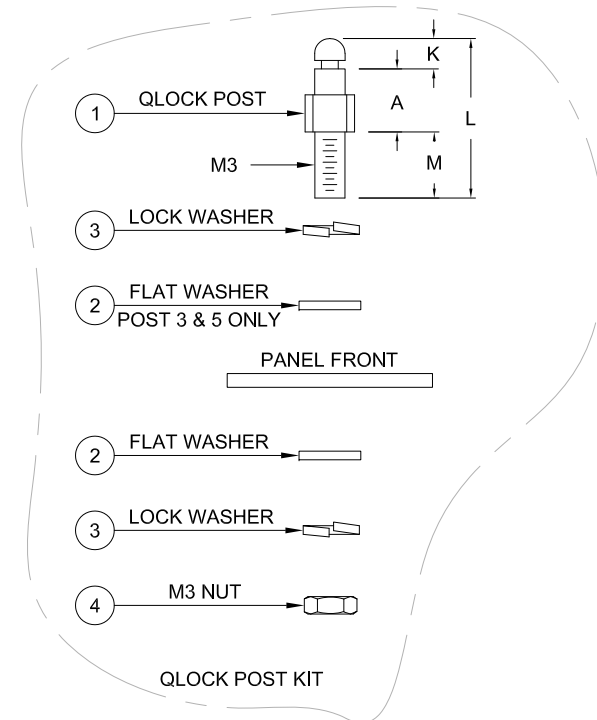
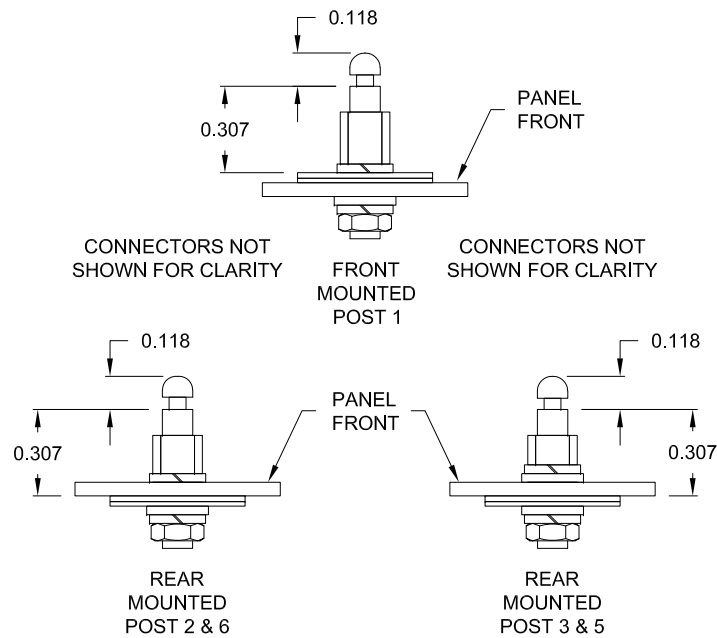


QUICK RELEASE POST KIT								
KIT PART NUMBER	QUANTITY IN KIT				QLOCK POST DIMENSIONS (Inch)			
	①	②	③	④	A	K	L	M
QLOCKPOST-1	2	2	4	2	0.276	0.118	0.787	0.394
QLOCKPOST-2	2	2	4	2	0.236	0.118	0.748	0.394
QLOCKPOST-3	2	4	4	2	0.197	0.118	0.630	0.315
QLOCKPOST-5	2	4	4	2	0.189	0.118	0.701	0.394
QLOCKPOST-6	2	2	4	2	0.189	0.118	0.701	0.394

MATERIAL CHARACTERISTICS

POST: STEEL, TIN PLATED
 FLAT WASHER: STAINLESS STEEL
 LOCK WASHER: STAINLESS STEEL
 M3 NUT: STEEL, TIN PLATED



RoHS COMPLIANT

UNITS = inch

DO NOT SCALE FROM DRAWING



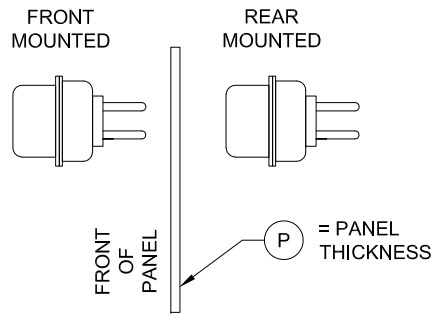
THESE DRAWINGS AND SPECIFICATIONS ARE THE PROPERTY OF NorComp AND SHALL NOT BE REPRODUCED, COPIED OR USED AS THE BASIS FOR THE MANUFACTURE OR SALE OF APPARATUS WITHOUT WRITTEN PERMISSION.

DRAWN:
C. SMITH
DATE:
04/10/2007

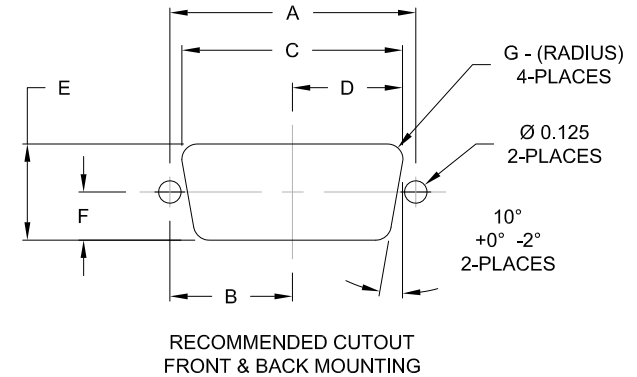
NorComp

SCALE: NTS	SHEET 1	OF 2	REV 8
DWG NO.			QLOCKPOST-Y

KIT PART NUMBER	PANEL THICKNESS	MOUNT LOCATION
	(P)	
QLOCKPOST-1	0.118 MAX	FRONT
QLOCKPOST-2	0.039-0.051	REAR
QLOCKPOST-3	0.059-0.071	REAR
QLOCKPOST-5	0.067-0.079	REAR
QLOCKPOST-6	0.087-0.098	REAR



POSITIONS	LOCATION	PANEL CUT OUT DIMENSIONS						
		A	B	C	D	E	F	G
9 STD / 15 H.D.	FRONT	0.984	0.492	0.874	0.437	0.513	0.257	0.083
	BACK	0.984	0.492	0.806	0.403	0.449	0.225	0.132
15 STD / 26 H.D.	FRONT	1.312	0.656	1.202	0.601	0.513	0.257	0.083
	BACK	1.312	0.656	1.134	0.567	0.449	0.225	0.132
25 STD / 44 H.D.	FRONT	1.852	0.926	1.743	0.872	0.513	0.257	0.083
	BACK	1.852	0.926	1.674	0.842	0.449	0.225	0.132
37 STD / 62 H.D.	FRONT	2.500	1.250	2.391	1.196	0.513	0.257	0.083
	BACK	2.500	1.250	2.326	1.163	0.449	0.225	0.132



RoHS COMPLIANT



THESE DRAWINGS AND SPECIFICATIONS ARE THE PROPERTY OF NorComp AND SHALL NOT BE REPRODUCED, COPIED OR USED AS THE BASIS FOR THE MANUFACTURE OR SALE OF APPARATUS WITHOUT WRITTEN PERMISSION.

DRAWN:
C. SMITH
DATE:
04/10/2007

UNITS = inch

DO NOT SCALE FROM DRAWING

NorComp

SCALE: NTS	SHEET 2	OF 2	REV 8
DWG NO.			QLOCKPOST-Y