

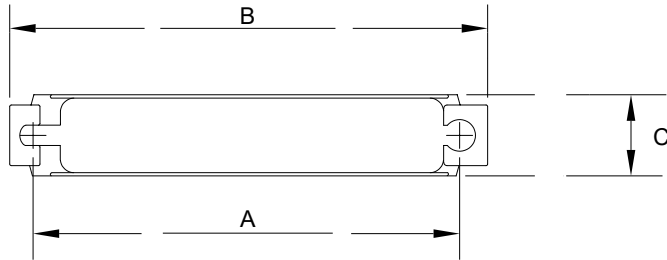
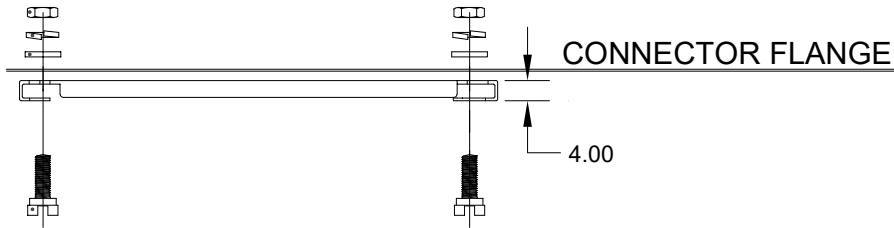
NOTE:

MATERIAL

SLIDE LOCK FRAME	STAINLESS STEEL
#4-40 MOUNTING SCREW	ZINC PLATED STEEL
FLAT WASHER	STAINLESS STEEL
LOCK WASHER	STAINLESS STEEL
#4-40 NUT	ZINC PLATED STEEL

KIT INCLUDES:

- (1X) SLIDE LOCK BAR
- (2X) #4-40 MOUNTING SCREW (RECOMMENED TORQUE 5.2 in-lbs)
- (2X) FLAT WASHERS
- (2X) LOCK WASHERS
- (2X) #4-40 NUTS (RECOMMENED TORQUE 5.2 in-lbs)



DIMENSIONS(mm)			
Part Number	A	B	C
160-037-005R031	63.5	74.4	12.0
160-050-006R031	61.1	72.0	15.0

160-YYY-00YR031

SERIES _____
 POSITIONS _____
 37 POSITION = 037-005
 50 POSITION = 050-006

For back shell assembly applications:
ONLY use the mounting screws when mounting slide lock bar
DO NOT use the flat washers, lock washers, and #4-40 nuts

UNITS = mm

DO NOT SCALE FROM DRAWING

RoHS COMPLIANT



THESE DRAWINGS AND SPECIFICATIONS ARE THE PROPERTY OF NorComp AND SHALL NOT BE REPRODUCED, COPIED OR USED AS THE BASIS FOR THE MANUFACTURE OR SALE OF APPARATUS WITHOUT WRITTEN PERMISSION.

DRAWN:
J. KADEL
 DATE:
10/07/2021

NorComp

SCALE: NTS	SHEET 1 OF 1	REV 2
DWG NO. 160-YYY-00YR031		