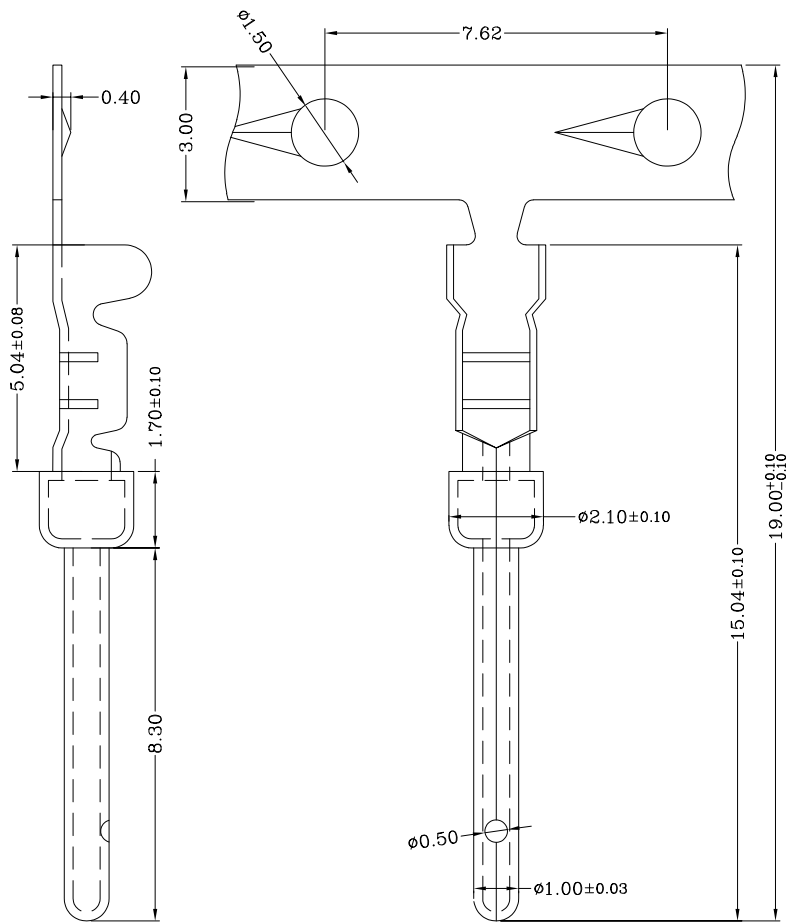


SPECIFICATIONS:

MATERIALS:

CONTACT: BRASS
 PLATING: SEE P/N TABLE BELOW
 AMPERAGE: 5A MAX



PART NUMBER	PLATING	WIRE AWG RANGE
170-001-170L001	GOLD FLASH ON MATING AREA // NICKEL ON WIRE CRIMP AREA	20-28 AWG
170-001-170L002	10µ" GOLD OVER 50µ" NICKEL ENTIRE CONTACT	20-28 AWG
170-001-170L003	30µ" GOLD OVER 100µ" NICKEL ENTIRE CONTACT	20-28 AWG

NOTE: CONTACTS SUPPLIED ON 10,000/pc REEL

NORCOMP CRIMP TOOL PART NUMBER => 170-701-170-000

RoHS COMPLIANT

UNITS = mm

DO NOT SCALE FROM DRAWING

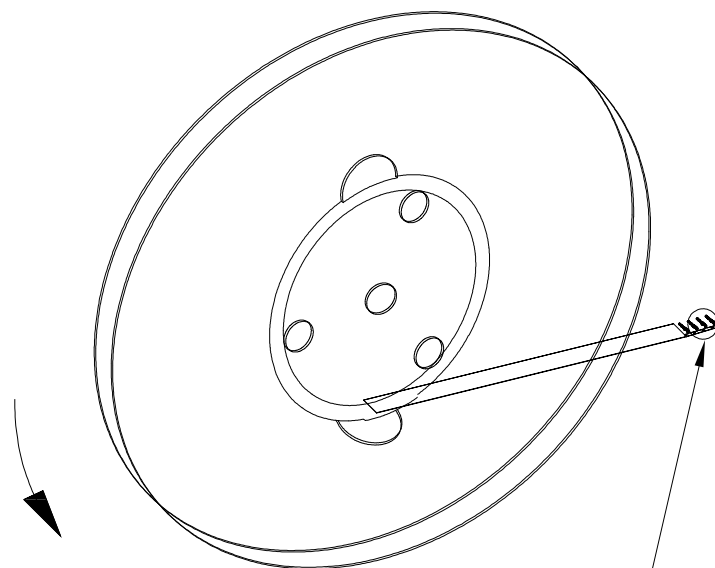


THESE DRAWINGS AND SPECIFICATIONS ARE THE PROPERTY OF NorComp AND SHALL NOT BE REPRODUCED, COPIED OR USED AS THE BASIS FOR THE MANUFACTURE OR SALE OF APPARATUS WITHOUT WRITTEN PERMISSION.

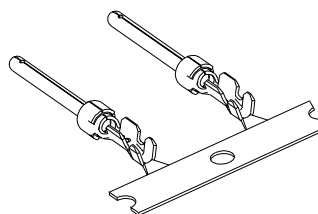
DRAWN: P. JENKINS
 DATE: 07/25/2005

NorComp

SCALE: NTS
 SHEET 1 OF 2
 REV 6
 DWG NO. 170-001-170L00Y



SEE DETAIL B



DETAIL B

RoHS COMPLIANT

DO NOT SCALE FROM DRAWING



THESE DRAWINGS AND SPECIFICATIONS ARE THE PROPERTY OF NorComp AND SHALL NOT BE REPRODUCED, COPIED OR USED AS THE BASIS FOR THE MANUFACTURE OR SALE OF APPARATUS WITHOUT WRITTEN PERMISSION.

DRAWN:
P. JENKINS

DATE:
07/25/2005

NorComp

SCALE:
NTS

SHEET 2 OF 2

REV 6

DWG NO. 170-001-170L00Y