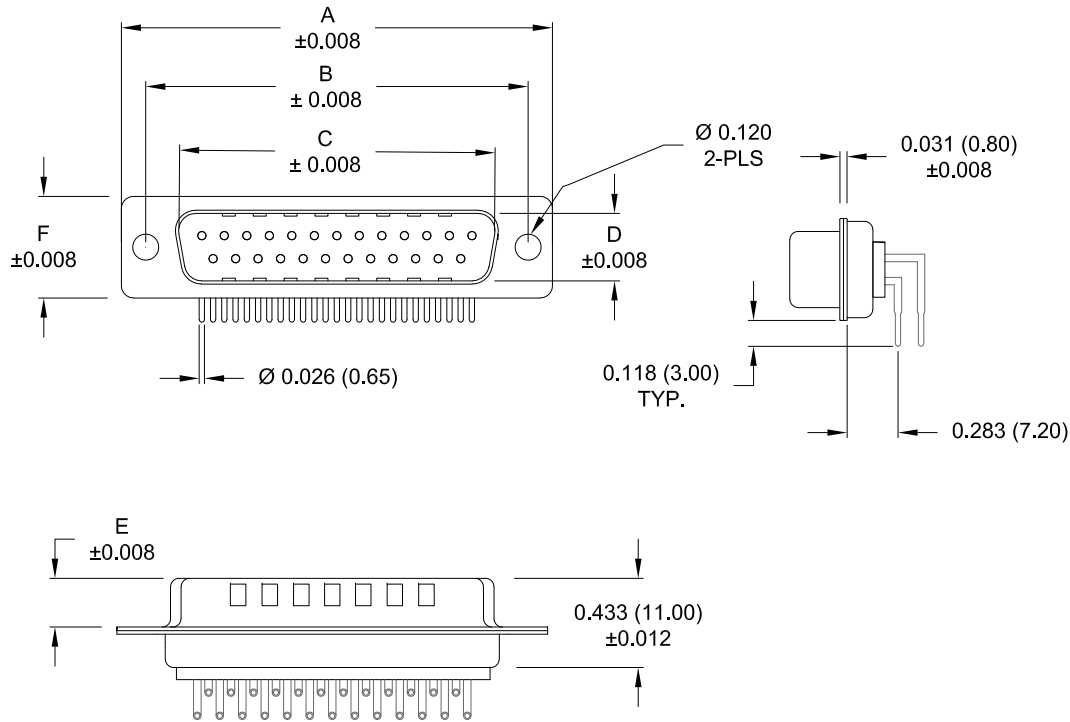


DESCRIPTION: MALE - 0.283 RIGHT ANGLE / MACHINED - ECONOMY



DIMENSIONS						
No. OF PINS	A	B	C	D	E	F
9	1.213	0.984	0.665	0.327	0.240	0.492
	30.80	25.00	16.90	8.30	6.10	12.50
15	1.543	1.311	0.994	0.327	0.240	0.492
	39.20	33.30	25.25	8.30	6.10	12.50
25	2.089	1.852	1.533	0.327	0.240	0.492
	53.05	47.05	38.95	8.30	6.10	12.50

773-EYY-1 1 3 R YY 1

SERIES _____
 POSITIONS _____
 E09 _____
 E15 _____
 E25 _____
 GENDER _____
 1 = MALE _____
 TERMINATION _____
 1 = THROUGH HOLE _____
 SHELL PLATING _____
 3 = NICKEL (GROUND INDENTS) _____
 RoHS COMPLIANT _____
 HARDWARE OPTIONS _____
 00 = NO HARDWARE _____
 01 = .065" CLINCH NUT (BOARD SIDE) _____
 0A = .098" CLINCH NUT (BOARD SIDE) _____
 14 = SHORT BRACKET WITH 4-40 SCREW LOCK _____
 46 = BRACKET WITH 4-40 INSERT & BOARDLOCK _____
 PLATING OPTIONS _____
 1 = GOLD FLASH _____
 2 = 30 MICRO-INCH GOLD _____

MEETS IP67 STANDARDS
 (SEE PAGE 3 FOR SEALING DETAILS)

MATERIAL:

SHELL: STEEL, NICKEL PLATED
 INSULATOR: UL 94V-O RATED, WHITE PA6T
 PROCESS TEMP.: 260° C
 CONTACT: BRASS
 SEALING MATERIAL: F08 FLEXIBLE ADHESIVE

ELECTRICAL:

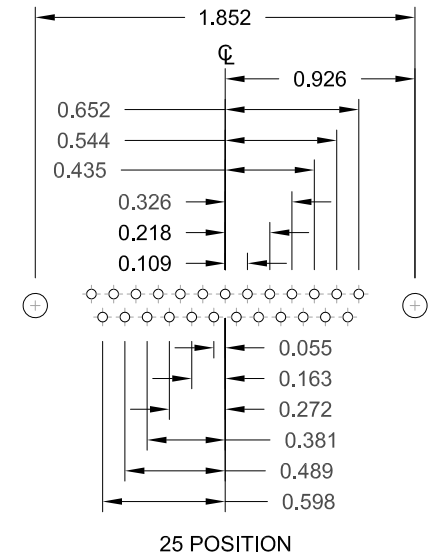
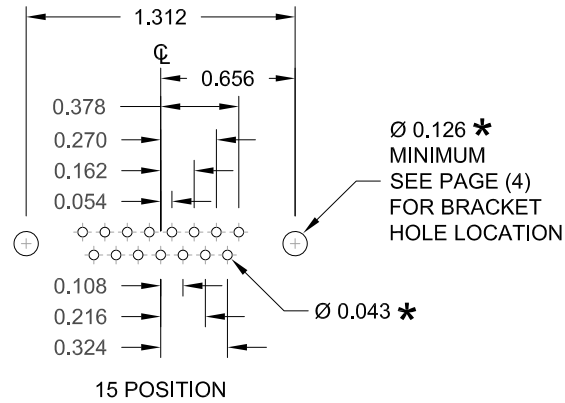
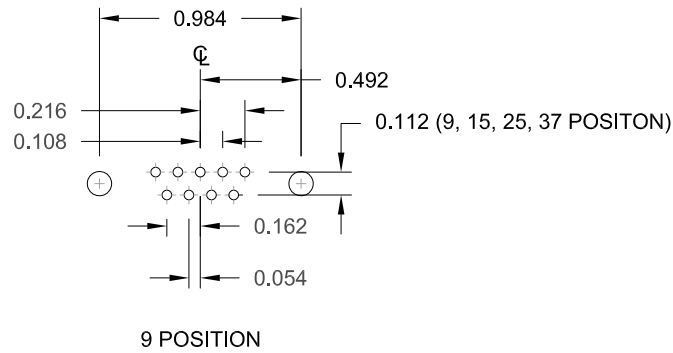
CURRENT RATING: 5 AMPS
 CONTACT RESISTANCE: 10 mOhms Max.
 INSULATION RESISTANCE: 5 GOhms min.
 WORKING VOLTAGE: 250 VAC
 TEMPERATURE: -55° C TO 125° C

RoHS COMPLIANT

UNITS = inch [mm]

DO NOT SCALE FROM DRAWING


	THESE DRAWINGS AND SPECIFICATIONS ARE THE PROPERTY OF NorComp AND SHALL NOT BE REPRODUCED, COPIED OR USED AS THE BASIS FOR THE MANUFACTURE OR SALE OF APPARATUS WITHOUT WRITTEN PERMISSION.		DRAWN: PAM JENKINS	DATE: 06-29-09
	NorComp		SCALE: NTS	SHEET 1 OF 4
			DWG NO. 773-EYY-113RYY1	



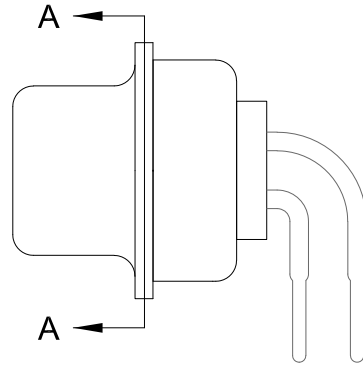
UNITS = inch

* TYP.
SUGGESTED SIZE
MAY NOT BE SUITABLE FOR ALL APPLICATIONS

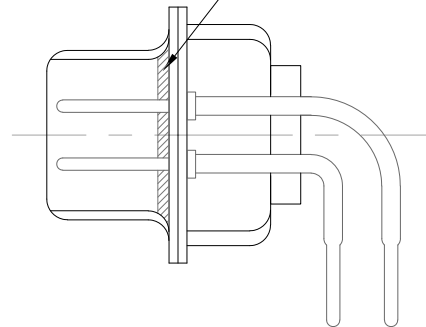
DO NOT SCALE FROM DRAWING

	THESE DRAWINGS AND SPECIFICATIONS ARE THE PROPERTY OF NorComp AND SHALL NOT BE REPRODUCED, COPIED OR USED AS THE BASIS FOR THE MANUFACTURE OR SALE OF APPARATUS WITHOUT WRITTEN PERMISSION.		DRAWN: PAM JENKINS	DATE: 06-29-09
	<h1>NorComp</h1>		SCALE: NTS	SHEET 2 OF 4
DWG NO. 773-EYY-113RYY1				

DESCRIPTION: IP67 - MALE - RIGHT ANGLE - MACHINED - ECONOMY - SEALING PROCESS




FRONT SEAL APPLIED OVER INSULATOR
AND BETWEEN FRONT & REAR SHELLS

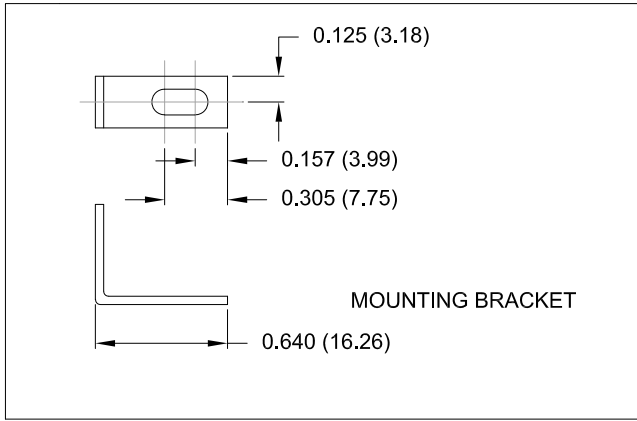


DETAIL A-A

DO NOT SCALE FROM DRAWING

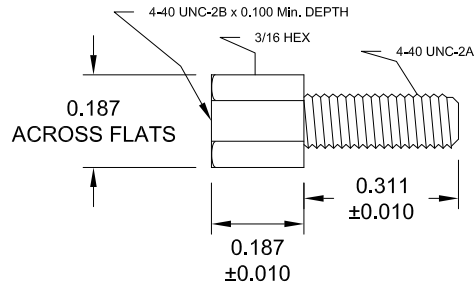
	THESE DRAWINGS AND SPECIFICATIONS ARE THE PROPERTY OF NorComp AND SHALL NOT BE REPRODUCED, COPIED OR USED AS THE BASIS FOR THE MANUFACTURE OR SALE OF APPARATUS WITHOUT WRITTEN PERMISSION.	DRAWN: PAM JENKINS		DATE: 06-29-09	
		SCALE: NTS		SHEET 3 OF 4	
NorComp		DWG NO. 773-EYY-113RYY1			
		REV 14			

DESCRIPTION: IP67 - MALE - RIGHT ANGLE - MACHINED - ECONOMY - HARDWARE OPTIONS



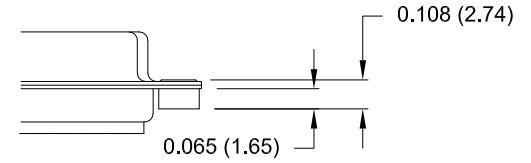
MOUNTING BRACKET

14Y = SHORT BRACKET & 4-40 SCREWLOCK

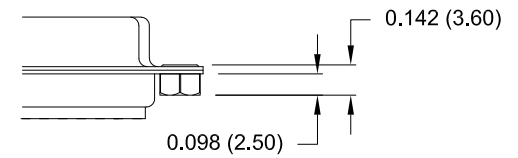


CLINCH-NUT HAS 4-40 INTERNAL THREADS

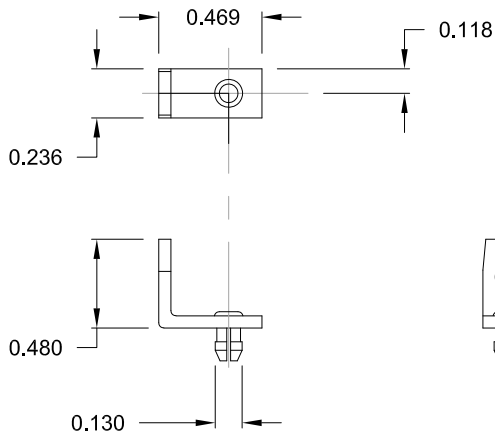
01X 0.065" (BOARD SIDE)



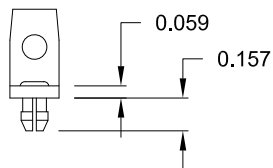
0AX 0.098" (BOARD SIDE)



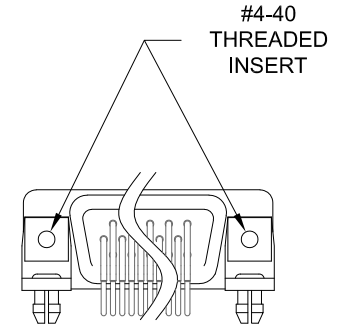
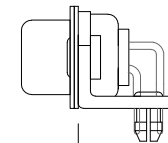
46 = BRACKET WITH 4-40 INSERT AND BOARDLOCK



MOUNTING BRACKET WITH BOARD LOCK



HOLE C/L 0.339



BRACKETS MOUNTED ON CONNECTOR

DO NOT SCALE FROM DRAWING

UNITS = inch [mm]



THESE DRAWINGS AND SPECIFICATIONS ARE THE PROPERTY OF NorComp AND SHALL NOT BE REPRODUCED, COPIED OR USED AS THE BASIS FOR THE MANUFACTURE OR SALE OF APPARATUS WITHOUT WRITTEN PERMISSION.

DRAWN: PAM JENKINS		DATE: 06-29-09	
SCALE: NTS	SHEET 4	OF 4	REV 14
DWG NO. 773-EYY-113RYY1			

NorComp