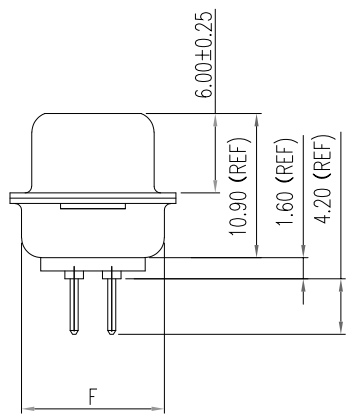
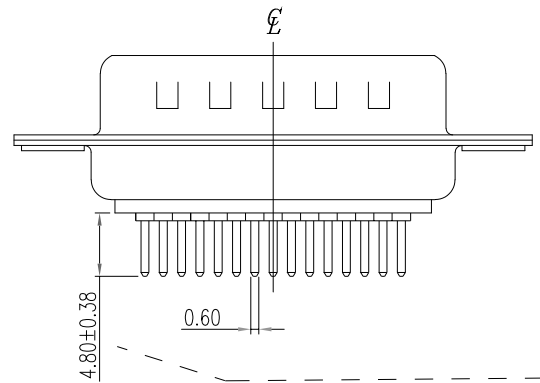
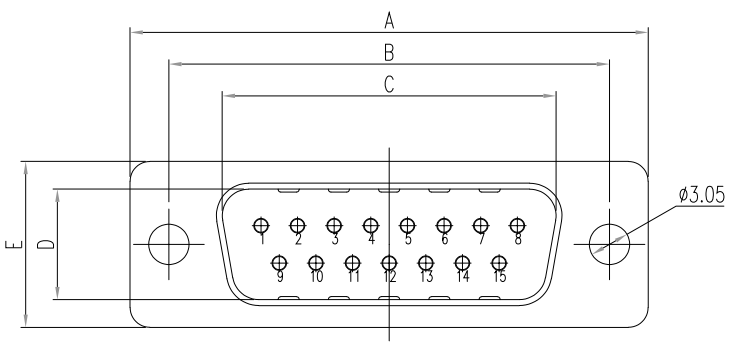


**SPECIFICATIONS:**

**MATERIALS:**  
 INSULATOR: GLASS-FILLED NYLON THERMOPLASTIC, UL94 V-0  
 PROCESS TEMP: 260°C  
 CONTACTS: GOLD PLATED BRASS  
 SHELL: NICKEL PLATED STEEL  
 SEALING MATERIAL: F08 FLEXIBLE ADHESIVE

**ELECTRICAL:**  
 RATED CURRENT: 5A  
 WORKING VOLTAGE: 250VAC  
 INSULATION RESISTANCE: 1000 MOhms MIN.  
 CONTACT RESISTANCE: 15 mOhms MAX.

**ENVIRONMENT:**  
 OPERATING TEMPERATURE: -55°C TO +125°C



**MEETS IP67 STANDARDS**  
 (SEE PAGE 3 FOR SEALING DETAILS)

**772-EYY-113RYY1**

SERIES  
 POSITIONS  
 09  
 15  
 25  
 GENDER  
 1 = MALE  
 CONTACT LENGTH  
 1 = 4.80mm TAILS  
 C = 6.30mm TAILS  
 D = 10.00mm TAILS  
 SHELL PLATING  
 3 = NICKEL (GROUND INDENTS)  
 HARDWARE OPTIONS  
 00 = NO HARDWARE  
 01 = 0.098" 4-40 INSERT, BOARD SIDE  
 05 = 0.237" 4-40 BOARD LOCK, BOARD SIDE  
 93 = 0.284" 4-40 BOARD LOCK, BOARD SIDE  
 PLATING OPTIONS  
 1 = GOLD FLASH  
 2 = 30u" GOLD

DIMENSIONS(mm)						
SIZE	A <sup>+0.39</sup> <sub>-0.39</sub>	B <sup>+0.25</sup> <sub>-0.25</sub>	C <sup>+0.25</sup> <sub>-0.25</sub>	D <sup>+0.25</sup> <sub>-0.34</sub>	E <sup>+0.38</sup> <sub>-0.38</sub>	F <sup>+0.25</sup> <sub>-0.25</sub>
9	30.81	24.99	16.92	8.36	12.55	10.80
15	39.19	33.32	25.25	8.36	12.55	10.80
25	53.04	47.04	38.96	8.36	12.55	10.80
37	69.32	63.50	55.42	8.36	12.55	10.80
50	67.00	61.10	52.80	11.26	15.40	13.30

**RoHS COMPLIANT**

UNITS = mm

**DO NOT SCALE FROM DRAWING**

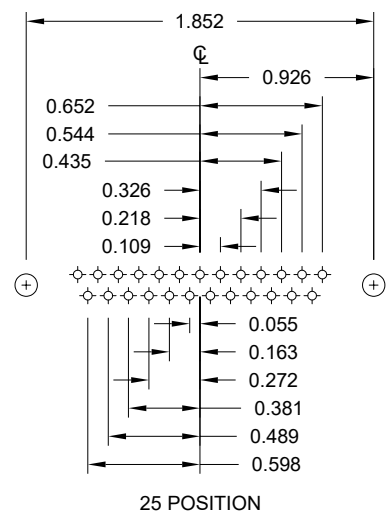
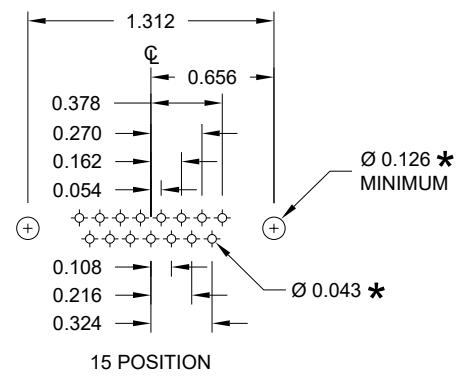
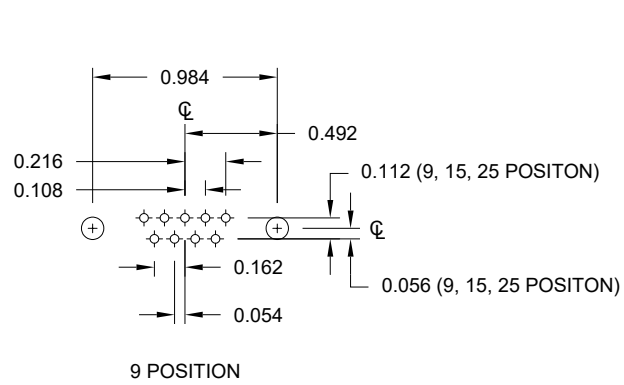


THESE DRAWINGS AND SPECIFICATIONS ARE THE PROPERTY OF NorComp AND SHALL NOT BE REPRODUCED, COPIED OR USED AS THE BASIS FOR THE MANUFACTURE OR SALE OF APPARATUS WITHOUT WRITTEN PERMISSION.

DRAWN:  
**P. JENKINS**  
 DATE:  
**09/18/2008**

**NorComp**

SCALE: NTS	SHEET 1	OF 3	REV 13
DWG NO. <b>772-EYY-113RYY1</b>			



\* TYP.  
SUGGESTED SIZE  
MAY NOT BE SUITABLE FOR ALL APPLICATIONS

RoHS COMPLIANT

UNITS = inch

DO NOT SCALE FROM DRAWING



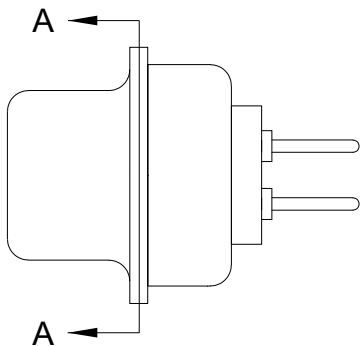
THESE DRAWINGS AND SPECIFICATIONS ARE THE PROPERTY OF NorComp AND SHALL NOT BE REPRODUCED, COPIED OR USED AS THE BASIS FOR THE MANUFACTURE OR SALE OF APPARATUS WITHOUT WRITTEN PERMISSION.

DRAWN:  
**P. JENKINS**  
DATE:  
**09/18/2008**

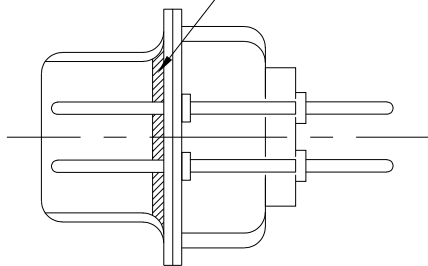
**NorComp**

SCALE: NTS	SHEET 2	OF 3	REV 13
DWG NO.		<b>772-EYY-113RYY1</b>	

SEALING PROCESS



FRONT SEAL APPLIED OVER INSULATOR AND BETWEEN FRONT & REAR SHELLS

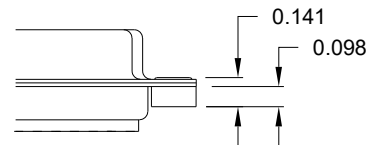


DETAIL A-A

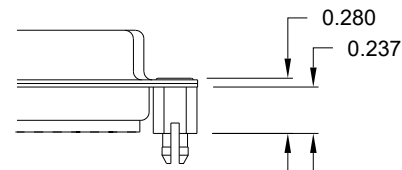
HARDWARE OPTION

ALL CLINCH-NUTS ARE 4-40 INTERNAL THREADS

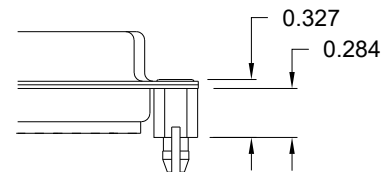
01X ..... 0.098" (BOARD SIDE)



05X ..... 0.237" (BOARD SIDE)



93X ..... 0.284" (BOARD SIDE)



RoHS COMPLIANT



THESE DRAWINGS AND SPECIFICATIONS ARE THE PROPERTY OF NorComp AND SHALL NOT BE REPRODUCED, COPIED OR USED AS THE BASIS FOR THE MANUFACTURE OR SALE OF APPARATUS WITHOUT WRITTEN PERMISSION.

DRAWN:  
P. JENKINS

DATE:  
09/18/2008

UNITS = inch

DO NOT SCALE FROM DRAWING

NorComp

SCALE:  
NTS

SHEET 3 OF 3

REV 13

DWG NO.

772-EYY-113RYY1