

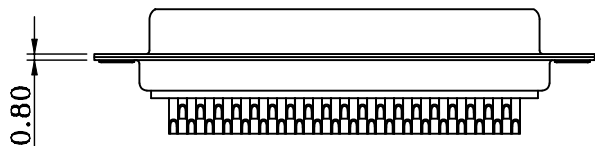
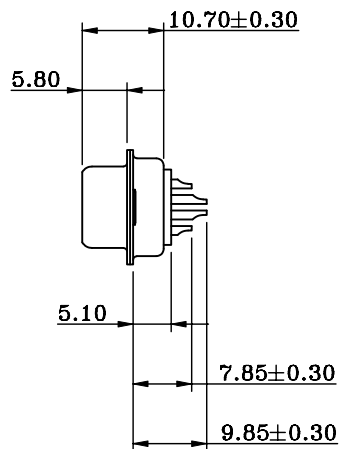
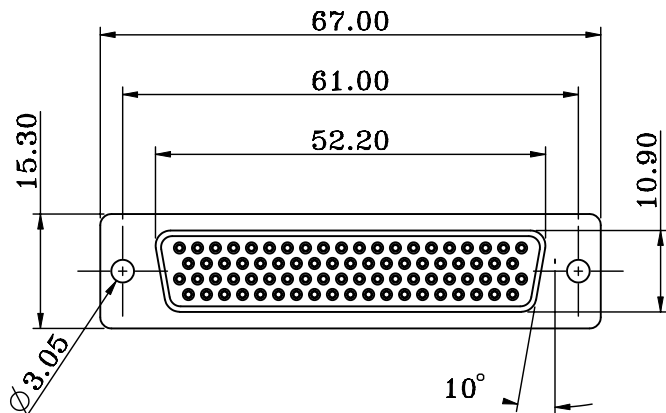
SPECIFICATIONS:

ELECTRICAL:

INSULATION RESISTANCE:	5 GΩ MIN.
DIELECTRIC WITHSTANDING VOLTAGE:	1000 VAC FOR 1 MIN
OPERATING TEMPERATURE:	-55°C TO +125°C
CONTACT RESISTANCE:	10 mΩ MAX.
CONTACT AMPERAGE:	3 AMPS

MATERIALS:

CONTACTS:	BRASS, SEE P/N KEY FOR PLATING
INSULATOR:	PBT, UL94 V-0 RATED, BLACK
SHELL:	NICKEL PLATED STEEL
HARDWARE:	NICKEL PLATED BRASS



ACCEPTS 28-24 AWG WIRE

180-M78-203LYYY

SERIES	180
MACHINED CONTACTS	M78
POSITIONS	203
78	
GENDER	L
2 = FEMALE	
TERMINATION	Y
0 = SOLDER CUP	
SHELL PLATING	Y
3 = NICKEL	
HARDWARE OPTIONS	Y
00 = NO HARDWARE, Ø.120" HOLE	
01 = .098" CLINCH NUT (BOARD SIDE)	
02 = .236" CLINCH NUT (BOARD SIDE)	
03 = .236" CLINCH NUT (MATING SIDE)	
PLATING OPTIONS	
1 = GOLD FLASH, ENTIRE CONTACT	
2 = 30u" GOLD, ENTIRE CONTACT	

RoHS COMPLIANT

UNITS = mm

DO NOT SCALE FROM DRAWING



THESE DRAWINGS AND SPECIFICATIONS ARE THE PROPERTY OF NorComp AND SHALL NOT BE REPRODUCED, COPIED OR USED AS THE BASIS FOR THE MANUFACTURE OR SALE OF APPARATUS WITHOUT WRITTEN PERMISSION.

DRAWN:

J. KADEL

DATE:

12/19/2022

NorComp

SCALE:
NTS

SHEET 1 OF 2

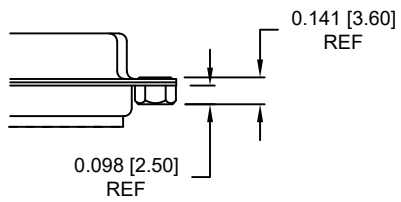
REV 0

DWG NO.

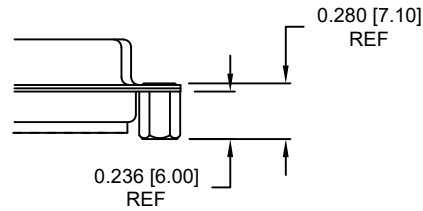
180-M78-203LYYY

ALL CLINCH-NUTS ARE 4-40 INTERNAL THREADS

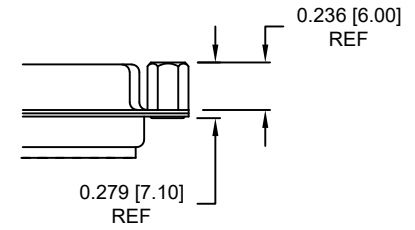
01 0.098" BOARD SIDE



02 0.236" BOARD SIDE



03..... 0.236" MATING SIDE



RoHS COMPLIANT

UNITS = inch [mm]

DO NOT SCALE FROM DRAWING



THESE DRAWINGS AND SPECIFICATIONS ARE THE PROPERTY OF NorComp AND SHALL NOT BE REPRODUCED, COPIED OR USED AS THE BASIS FOR THE MANUFACTURE OR SALE OF APPARATUS WITHOUT WRITTEN PERMISSION.

DRAWN:

J. KADEL

DATE:

12/19/2022

NorComp

SCALE:

NTS

SHEET

OF

2

2

REV

0

DWG NO.

180-M78-203LYYY