

**SPECIFICATIONS:**

**MATERIALS:**

SHELL: NICKEL PLATED STEEL  
 INSULATOR: PA6T, UL94 V-0  
 PROCESS TEMP: 260°C  
 CONTACTS: GOLD PLATED BRASS

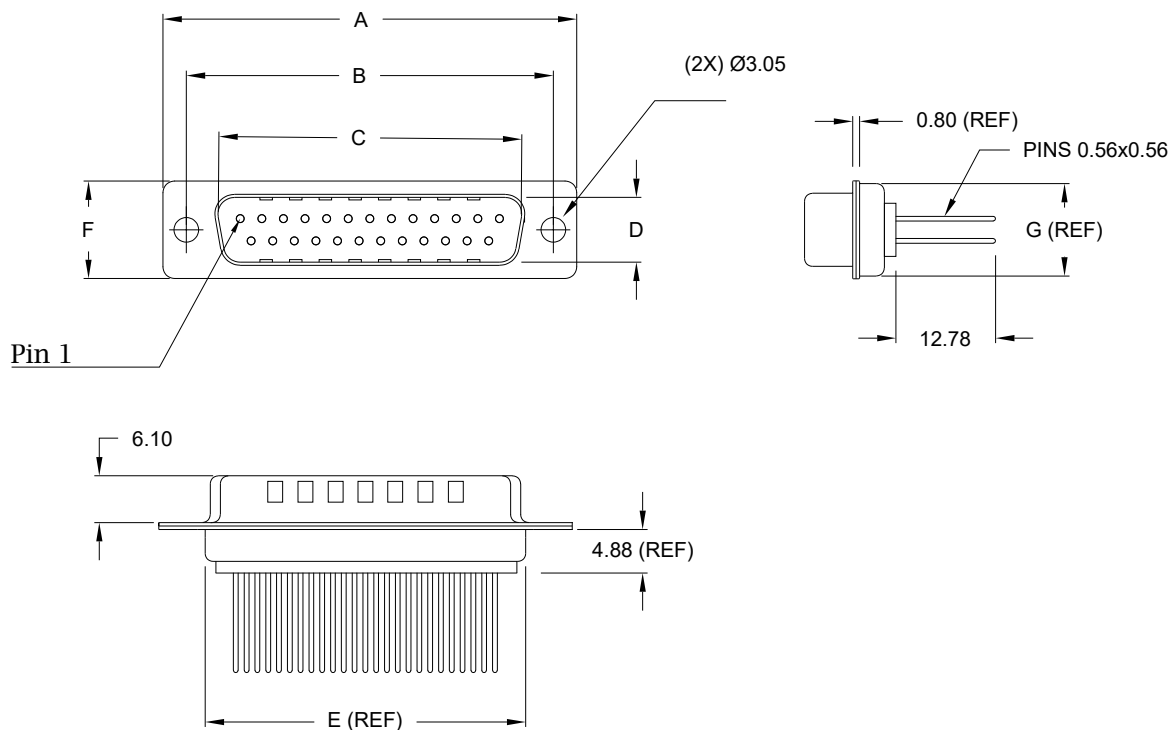
**ELECTRICAL:**

RATED CURRENT: 5A  
 VOLTAGE: 500VAC FOR 1 MINUTE  
 INSULATION RESISTANCE: 1000 MOhms MIN.  
 CONTACT RESISTANCE: 15 mOhms MAX.

**ENVIRONMENT:**

OPERATING TEMPERATURE: -50°C TO +100°C

DIMENSIONS(mm)							
SIZE	A±.36	B±.10	C±.15	D±.15	E±.38	F±.25	G (REF)
9	30.80	24.99	17.00	8.40	19.20	12.60	10.75
15	39.15	33.32	25.30	8.40	27.70	12.60	10.75
25	53.04	47.04	39.00	8.40	41.10	12.60	10.75
37	69.32	63.50	55.40	8.40	57.30	12.60	10.75
50	66.93	61.11	52.80	11.10	55.10	15.20	13.30



172-YYY-143RYY1

SERIES \_\_\_\_\_  
 POSITIONS \_\_\_\_\_  
 009  
 015  
 025  
 037  
 050  
 GENDER \_\_\_\_\_  
 1 = MALE  
 TERMINATION \_\_\_\_\_  
 4 = WIRE WRAP  
 SHELL PLATING \_\_\_\_\_  
 3 = NICKEL (GROUND INDENTS)  
 HARDWARE OPTIONS \_\_\_\_\_  
 00 = NO HARDWARE  
 01 = .098" CLINCH NUT (PCB SIDE)  
 02 = .236" CLINCH NUT (PCB SIDE)  
 03 = .236" CLINCH NUT (MATING SIDE)  
 05 = .237" 4-40 BOARD LOCK  
 91 = .237" 4-40 SPACER/ BOARD LOCK  
 PLATING OPTIONS \_\_\_\_\_  
 1 = GOLD FLASH  
 2 = 30MICRO-INCH GOLD

RoHS COMPLIANT

UNITS = mm

DO NOT SCALE FROM DRAWING

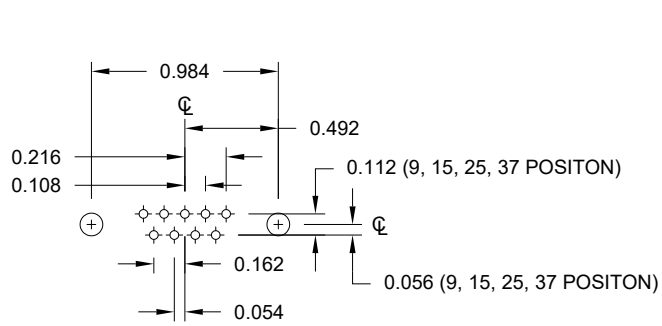


THESE DRAWINGS AND SPECIFICATIONS ARE THE PROPERTY OF NorComp AND SHALL NOT BE REPRODUCED, COPIED OR USED AS THE BASIS FOR THE MANUFACTURE OR SALE OF APPARATUS WITHOUT WRITTEN PERMISSION.

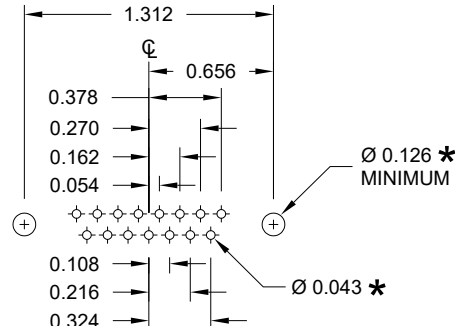
DRAWN: P. JENKINS  
 DATE: 11/23/2005

NorComp

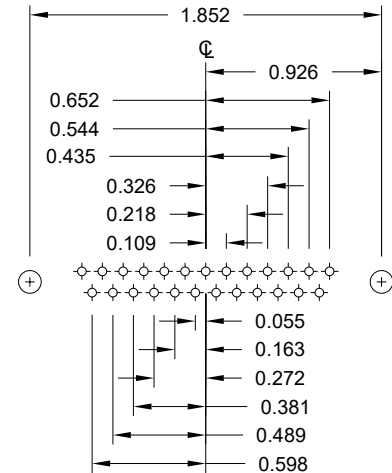
SCALE: NTS SHEET 1 OF 3 REV 17  
 DWG NO. 172-YYY-143RYY1



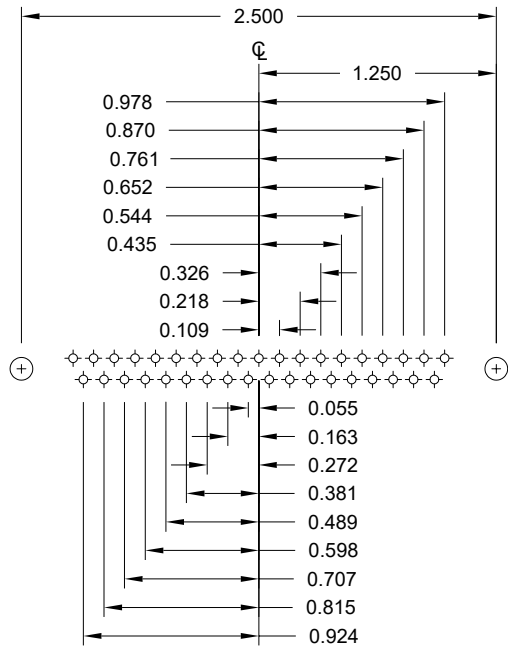
9 POSITION



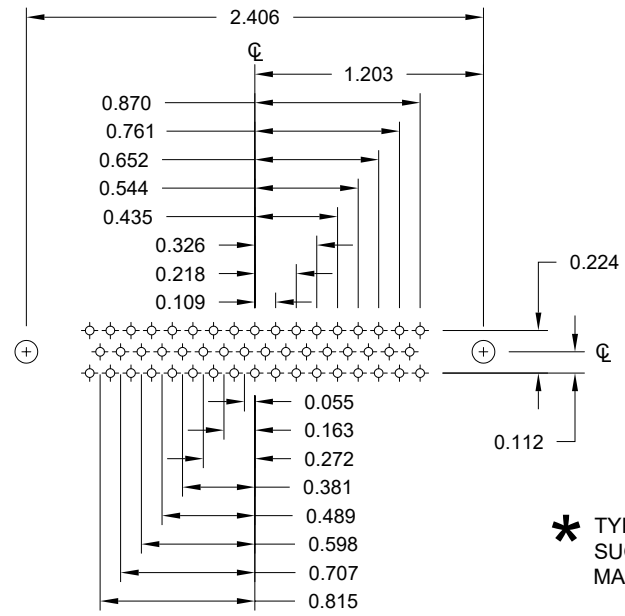
15 POSITION



25 POSITION



37 POSITION



50 POSITION

\* TYP. SUGGESTED SIZE MAY NOT BE SUITABLE FOR ALL APPLICATIONS

RoHS COMPLIANT

UNITS = inch

DO NOT SCALE FROM DRAWING



THESE DRAWINGS AND SPECIFICATIONS ARE THE PROPERTY OF NorComp AND SHALL NOT BE REPRODUCED, COPIED OR USED AS THE BASIS FOR THE MANUFACTURE OR SALE OF APPARATUS WITHOUT WRITTEN PERMISSION.

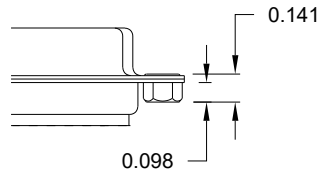
DRAWN: P. JENKINS  
DATE: 11/23/2005

NorComp

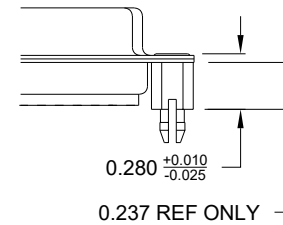
SCALE: NTS	SHEET 2 OF 3	REV 17
DWG NO. 172-YYY-143RYY1		

ALL CLINCH-NUTS ARE 4-40 INTERNAL THREADS

01X ..... 0.098" (PCB SIDE)

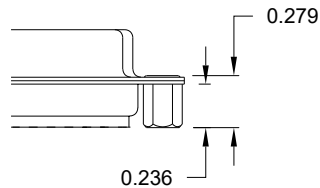


05X ..... 0.237" (BOARD SIDE)

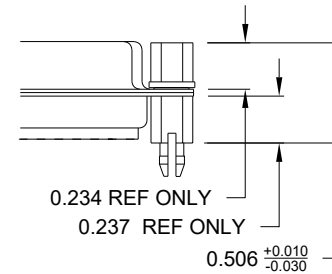


**TOLERANCE:**  
ALL DIMENSIONS ARE  $\pm 0.010$   
UNLESS OTHERWISE  
SPECIFIED

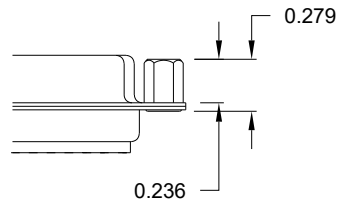
02X ..... 0.236" (PCB SIDE)



91X ..... 0.237" (BOARD SIDE)



03X..... 0.236" (MATING SIDE)



NOTE: 4-40 FEMALE SCREW LOCK IS REMOVABLE

50 in-oz  
Max Torque

RoHS COMPLIANT

UNITS = inch

DO NOT SCALE FROM DRAWING



THESE DRAWINGS AND SPECIFICATIONS ARE THE PROPERTY OF NorComp AND SHALL NOT BE REPRODUCED, COPIED OR USED AS THE BASIS FOR THE MANUFACTURE OR SALE OF APPARATUS WITHOUT WRITTEN PERMISSION.

DRAWN:  
P. JENKINS

DATE:  
11/23/2005

NorComp

SCALE:  
NTS

SHEET 3 OF 3

REV 17

DWG NO.

172-YYY-143RYY1