

DESCRIPTION: M8 // MALE // RIGHT ANGLE PCB MOUNT PANEL MOUNT

SPECIFICATIONS:

MATERIALS:

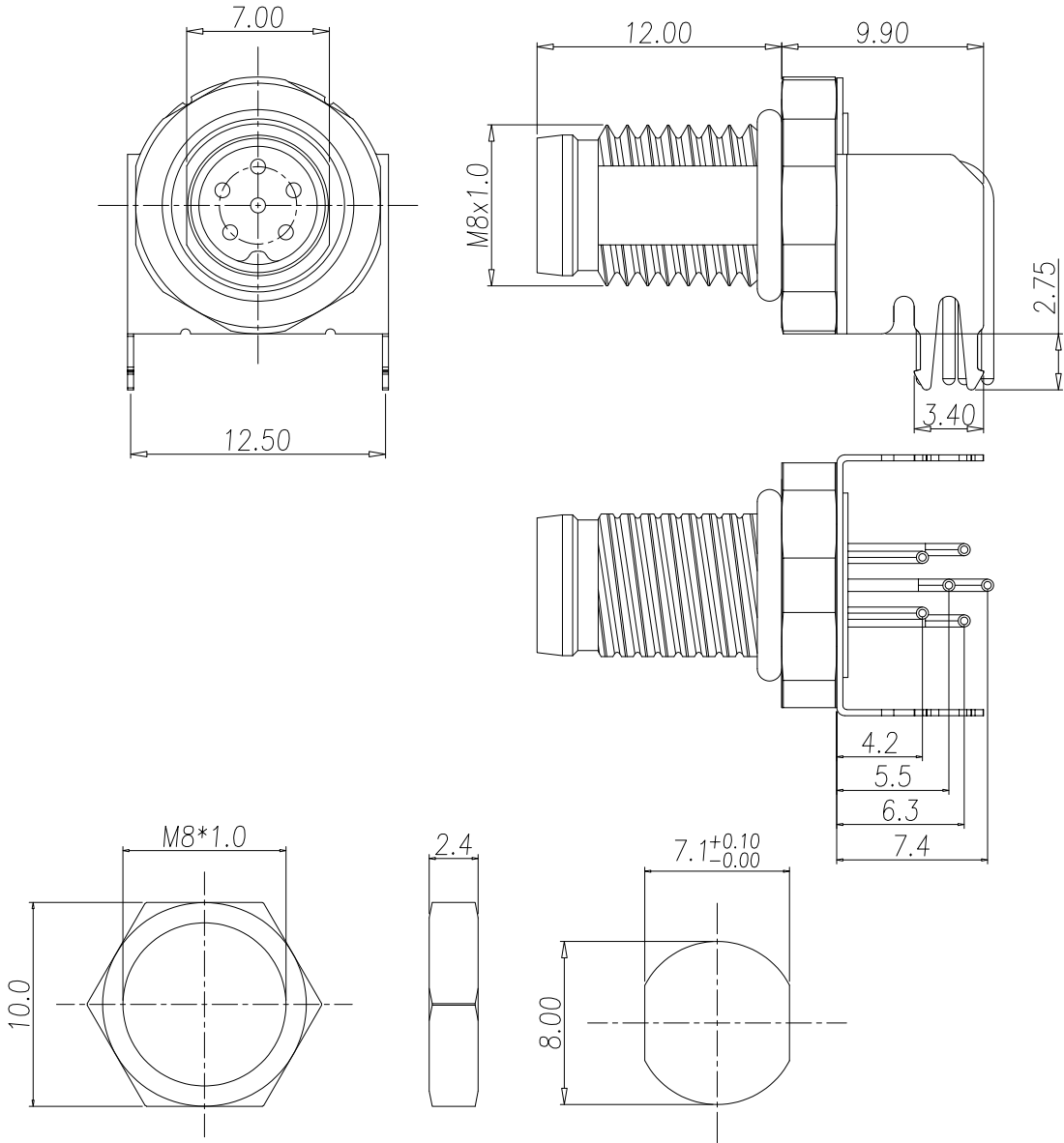
HOUSING:	PA, UL94 V-0, BLACK
CONTACTS:	10u" GOLD PLATED BRASS
NUT:	NICKEL PLATED BRASS
SHELL:	NICKEL PLATED BRASS
ORING:	NBR
GROUND:	TIN PLATED BRONZE

ELECTRICAL:

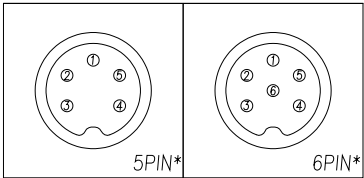
RATED CURRENT:	1.5A
RATED VOLTAGE:	30V
INSULATION RESISTANCE:	100 MOhms MIN.
CONTACT RESISTANCE:	10 mOhms MAX.

ENVIRONMENT:

OPERATING TEMPERATURE:	-40°C TO +85°C
WATER PROOF:	IP67



MATING FACE VIEW



857-YYY-113R004

005 = 5 POSITION  
006 = 6 POSITION

\*Key not required on mating connector. NorComp M8  
5P & 6P male mates do not have key.

NUT

RECOMMEND PANEL CUT-OUT

RoHS COMPLIANT



THESE DRAWINGS AND SPECIFICATIONS ARE THE PROPERTY OF NorComp AND SHALL NOT BE REPRODUCED, COPIED OR USED AS THE BASIS FOR THE MANUFACTURE OR SALE OF APPARATUS WITHOUT WRITTEN PERMISSION.

DRAWN:  
J. KADEL

DATE:  
08/20/2025

UNITS = mm

DO NOT SCALE FROM DRAWING

NorComp

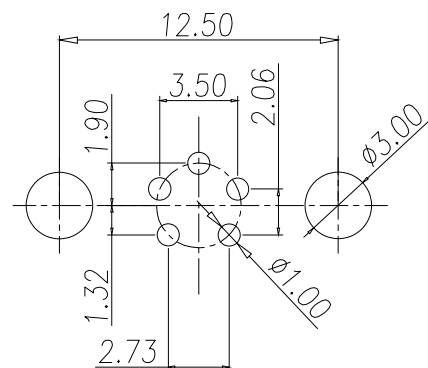
SCALE:  
NTS

SHEET OF  
1 2

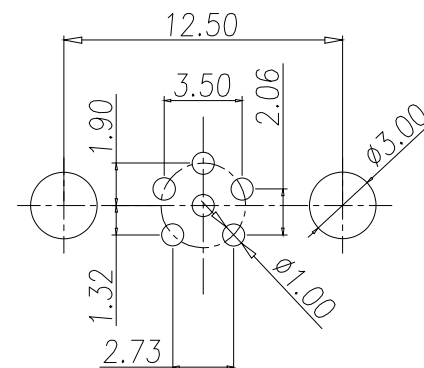
REV  
1

DWG NO.

857-YYY-113R004



5P P.C.B LAYOUT



6P P.C.B LAYOUT

RoHS COMPLIANT



THESE DRAWINGS AND SPECIFICATIONS ARE THE PROPERTY OF NorComp AND SHALL NOT BE REPRODUCED, COPIED OR USED AS THE BASIS FOR THE MANUFACTURE OR SALE OF APPARATUS WITHOUT WRITTEN PERMISSION.

DRAWN:

J. KADEL

DATE:

08/20/2025

UNITS = mm

DO NOT SCALE FROM DRAWING

NorComp

SCALE:

NTS

SHEET

OF

2

2

REV

1

DWG NO.

857-YYY-113R004