

## NOTE:

## MATERIAL

HOUSING:

PBT UL94V-0, BLACK

CONTACT:

BRASS

NUT:

BRASS

SHELL:

BRASS

ORING:

NBR

## FINISH

CONTACT:

10u" GOLD PLATED  
OVER NICKEL

NUT:

NICKEL PLATED

SHELL:

NICKEL PLATED

## ELECTRICAL

RATED CURRENT:

1.5A

RATED VOLTAGE:

30V

INSULATION RESISTANCE:

100 MΩhms MIN.

CONTACT RESISTANCE:

10 mΩhms MAX.

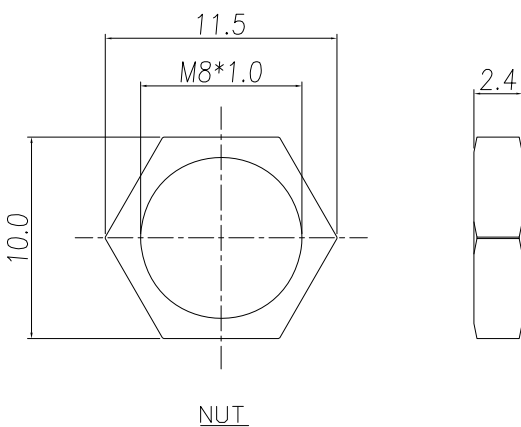
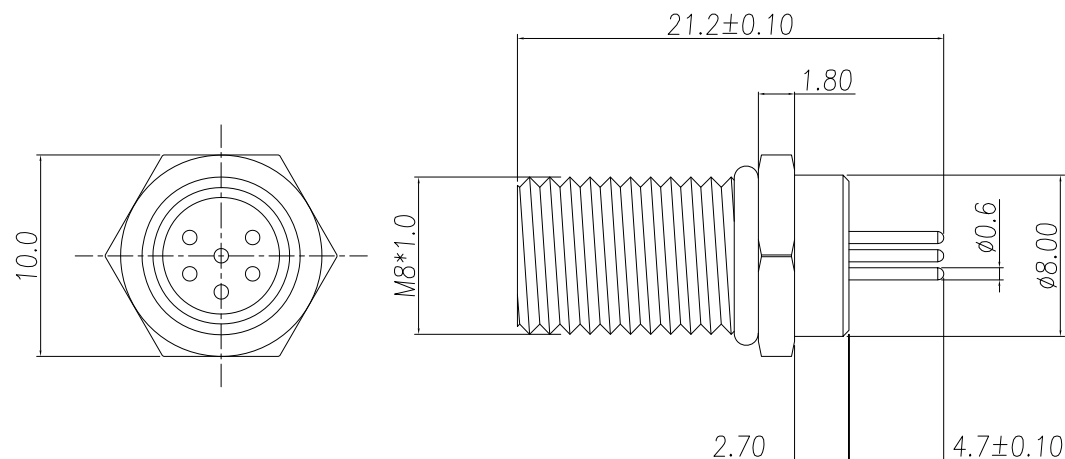
WATER PROOF:

IP67

## ENVIRONMENT

OPERATION TEMPERATURE:

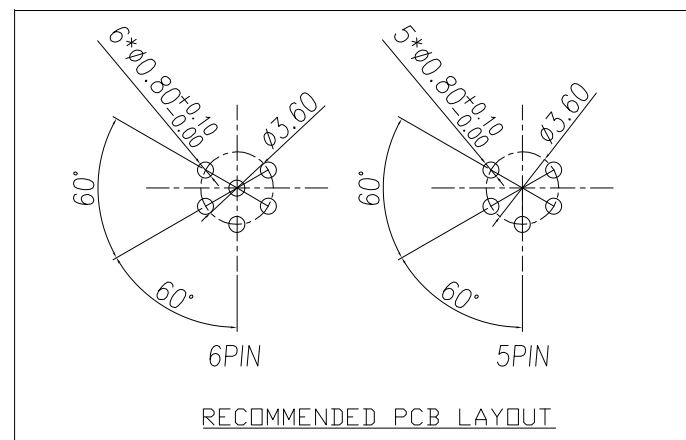
-40°C TO +85°C



RECOMMENDED PANEL CUT-OUT

856-00Y-113R004

5 = 5 POSITION  
6 = 6 POSITION



RoHS COMPLIANT



THESE DRAWINGS AND SPECIFICATIONS ARE THE PROPERTY OF NorComp AND SHALL NOT BE REPRODUCED, COPIED OR USED AS THE BASIS FOR THE MANUFACTURE OR SALE OF APPARATUS WITHOUT WRITTEN PERMISSION.

DRAWN:

J. KADEL

DATE:

04/13/2021

UNITS = mm

DO NOT SCALE FROM DRAWING

NorComp

SCALE:

NTS

SHEET

OF

1

1

REV

0

DWG NO.

856-00Y-113R004