

SPECIFICATIONS:

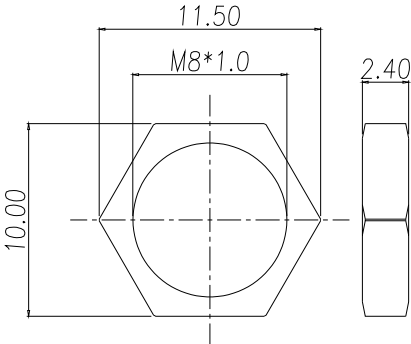
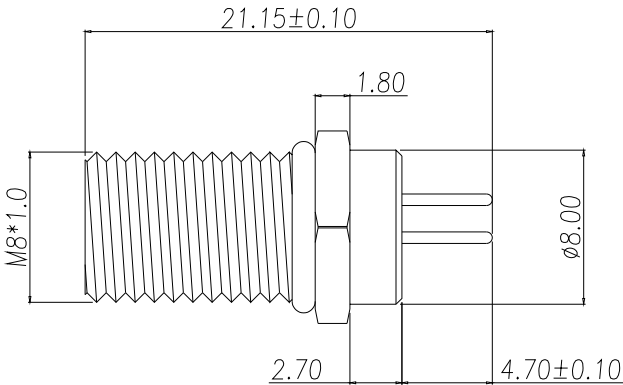
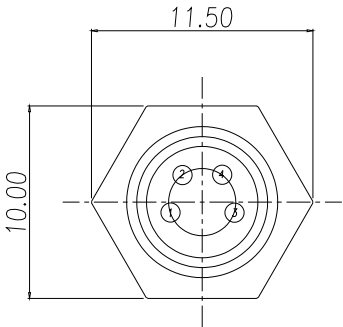
**MATERIALS:**  
HOUSING: PBT, UL94 V-0, BLACK  
CONTACTS: 10u" GOLD PLATED BRASS  
NUT: SEE P/N KEY BELOW  
SHELL: SEE P/N KEY BELOW  
ORING: NBR

**ELECTRICAL:**  
RATED CURRENT: 3A  
RATED VOLTAGE: 60V  
INSULATION RESISTANCE: 100 MOhms MIN.  
CONTACT RESISTANCE: 10 mOhms MAX.

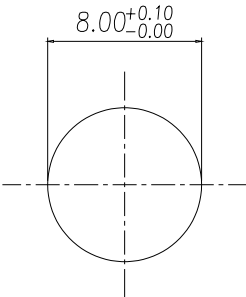
**ENVIRONMENT:**  
OPERATING TEMPERATURE: -40°C TO +85°C  
WATER PROOF: IP67

856-004-11YR004

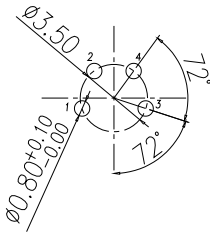
3 = BRASS/NICKEL NUT & SHELL  
S = 316 STAINLESS STEEL NUT & SHELL



NUT

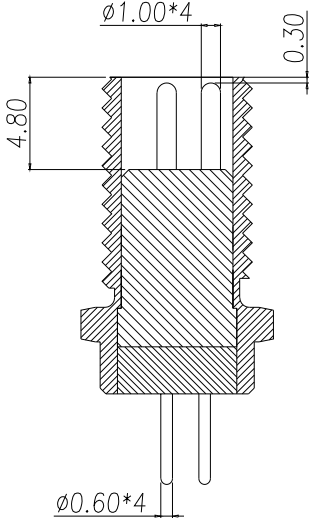


RECOMMEND PANEL CUT-OUT



4 PIN

RECOMMEND PCB LAYOUT



RoHS COMPLIANT



THESE DRAWINGS AND SPECIFICATIONS ARE THE PROPERTY OF NorComp AND SHALL NOT BE REPRODUCED, COPIED OR USED AS THE BASIS FOR THE MANUFACTURE OR SALE OF APPARATUS WITHOUT WRITTEN PERMISSION.

DRAWN:  
J. KADEL

DATE:  
11/24/2020

UNITS = mm

DO NOT SCALE FROM DRAWING

NorComp

SCALE:  
NTS

SHEET 1 OF 1

REV 4

DWG NO.

856-004-113R004