

NOTE:

MATERIAL

HOUSING:

PBT UL94V-0, BLACK

CONTACT:

BRASS

NUT:

BRASS

SHELL:

BRASS

ORING:

NBR

FINISH

CONTACT:

10u" GOLD PLATED
OVER NICKEL

NUT:

NICKEL PLATED

SHELL:

NICKEL PLATED

ELECTRICAL

RATED CURRENT:

3A

RATED VOLTAGE:

60V

INSULATION RESISTANCE:

100 MΩhms MIN.

CONTACT RESISTANCE:

10 mΩhms MAX.

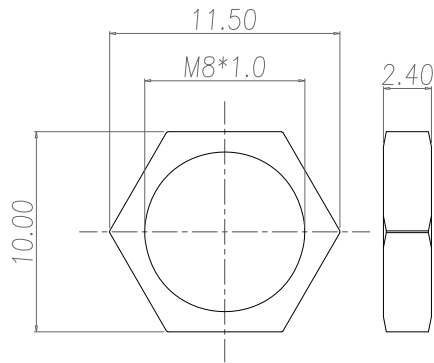
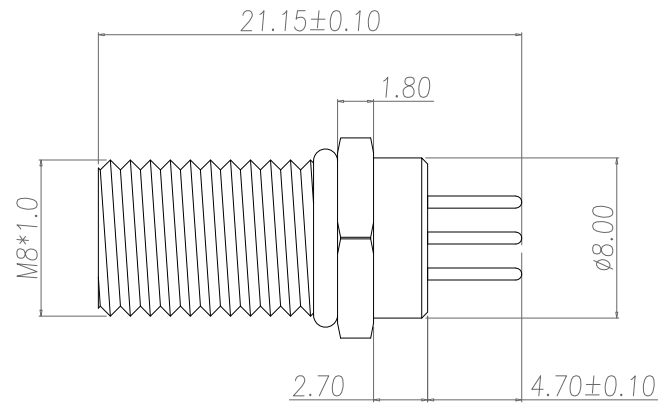
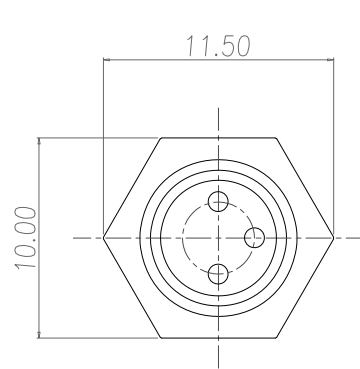
WATER PROOF:

IP67

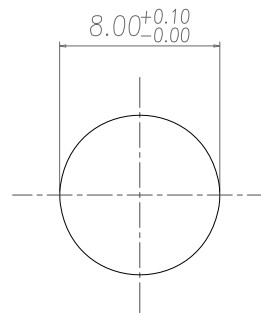
ENVIRONMENT

OPERATION TEMPERATURE:

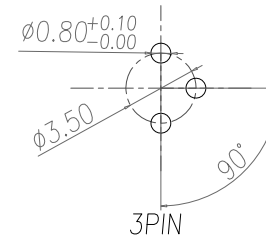
-40°C TO +85°C



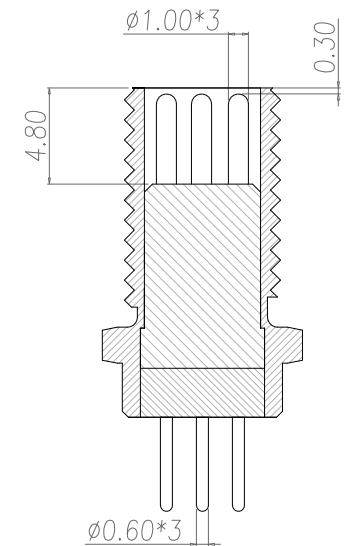
NUT



RECOMMEND PANEL CUT-OUT



RECOMMEND PCB LAYOUT



RoHS COMPLIANT

UNITS = mm

DO NOT SCALE FROM DRAWING



THESE DRAWINGS AND SPECIFICATIONS ARE THE PROPERTY OF NorComp AND SHALL NOT BE REPRODUCED, COPIED OR USED AS THE BASIS FOR THE MANUFACTURE OR SALE OF APPARATUS WITHOUT WRITTEN PERMISSION.

DRAWN:

J. KADEL

DATE:

12/09/2020

NorComp

SCALE:

NTS

SHEET

1 OF 1

REV

1

DWG NO.

856-003-113R004