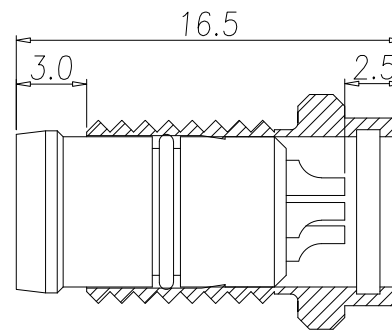
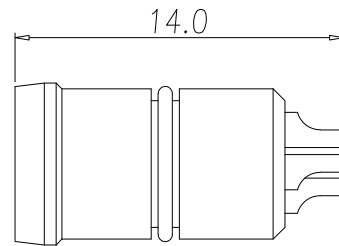
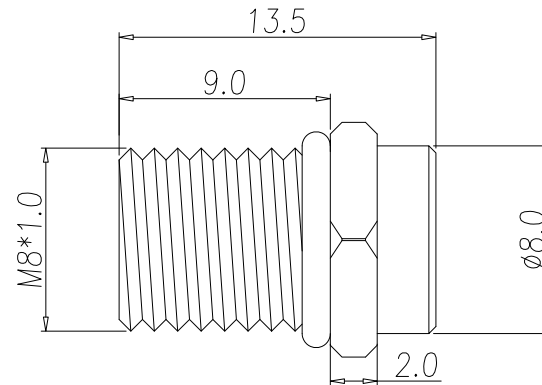
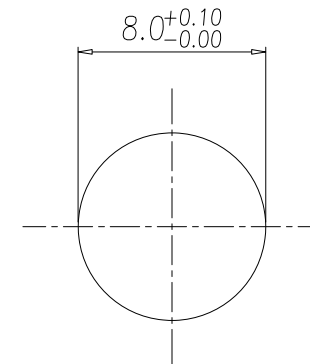
NUT

ASSEMBLY

RECOMMENDPANEL CUT-OUT**NOTE:****MATERIAL**

HOUSING:
CONTACT:
NUT:
SHELL:
O-RING:

PA66 UL94V-0, BLACK
BRASS
BRASS
BRASS
NBR, BLACK

FINISH

CONTACT:
NUT:
SHELL:

10u" GOLD PLATED
NICKEL PLATED
NICKEL PLATED

ELECTRICAL

RATED CURRENT:
RATED VOLTAGE:
INSULATION RESISTANCE:
CONTACT RESISTANCE:
WATER PROOF:

1.5A
30V
100 MOhms MIN.
10 mOhms MAX.
IP67

ENVIRONMENT

OPERATION TEMPERATURE:

-40°C TO +85°C

PACKING INFORMATION ON SECOND PAGE

RoHS COMPLIANT

THESE DRAWINGS AND SPECIFICATIONS ARE THE PROPERTY OF NorComp AND SHALL NOT BE REPRODUCED, COPIED OR USED AS THE BASIS FOR THE MANUFACTURE OR SALE OF APPARATUS WITHOUT WRITTEN PERMISSION.

DRAWN:

J. KADEL

DATE:

02/15/2022

UNITS = mm

NorComp**DO NOT SCALE FROM DRAWING**

SCALE:
NTS

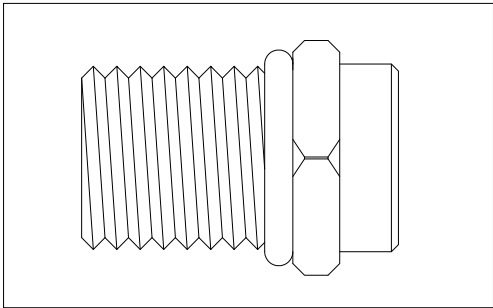
SHEET OF
1 2

REV
1

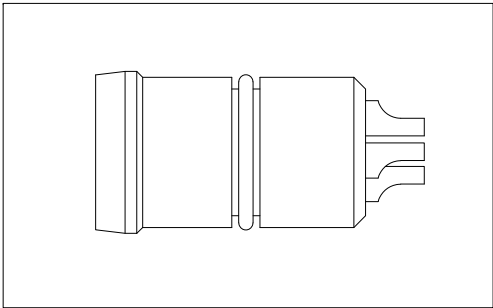
DWG NO.

855-B05-103R004

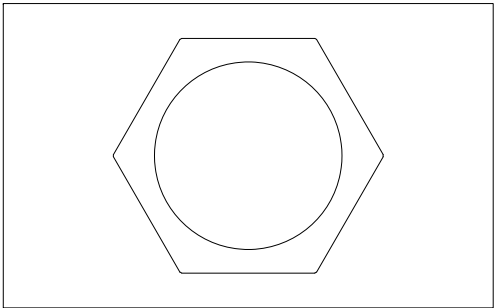
1 TRAY = SHELL + ORING (100/pcs)



1 TRAY = INSULATOR + CONTACTS + ORING (100/pcs)



1 BAG = NUTS (QTY DEPENDS ON ORDER QTY)



RoHS COMPLIANT



THESE DRAWINGS AND SPECIFICATIONS ARE THE PROPERTY OF NorComp AND SHALL NOT BE REPRODUCED, COPIED OR USED AS THE BASIS FOR THE MANUFACTURE OR SALE OF APPARATUS WITHOUT WRITTEN PERMISSION.

DRAWN:

J. KADEL

DATE:

02/15/2022

UNITS = mm

DO NOT SCALE FROM DRAWING

NorComp

SCALE:
NTS

SHEET OF
2 2

REV
1

DWG NO.

855-B05-103R004