

DESCRIPTION: M8 // M // 4P // FRONT OF PANEL MOUNT

# NOTE:

## MATERIAL

HOUSING:

CONTACT:

NUT:

SHELL:

O-RING:

## ELECTRICAL

RATED CURRENT:

RATED VOLTAGE:

INSULATION RESISTANCE:

CONTACT RESISTANCE:

WATER PROOF:

## ENVIRONMENT

OPERATION TEMPERATURE:

PBT, UL94V-0, BLACK

10u" GOLD PLATED BRASS

NICKEL PLATED BRASS

NICKEL PLATED BRASS

NBR, BLACK

3A

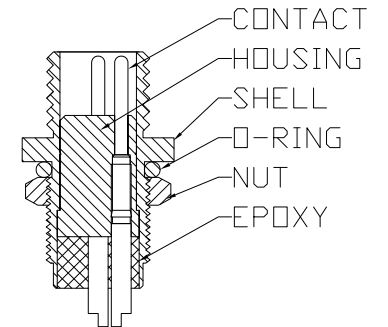
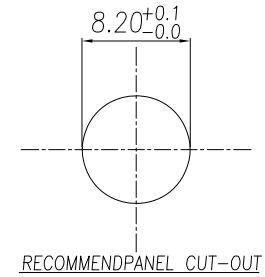
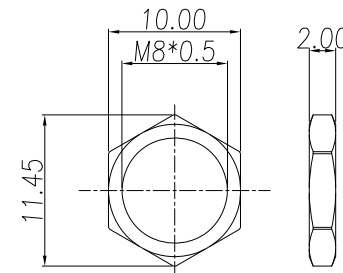
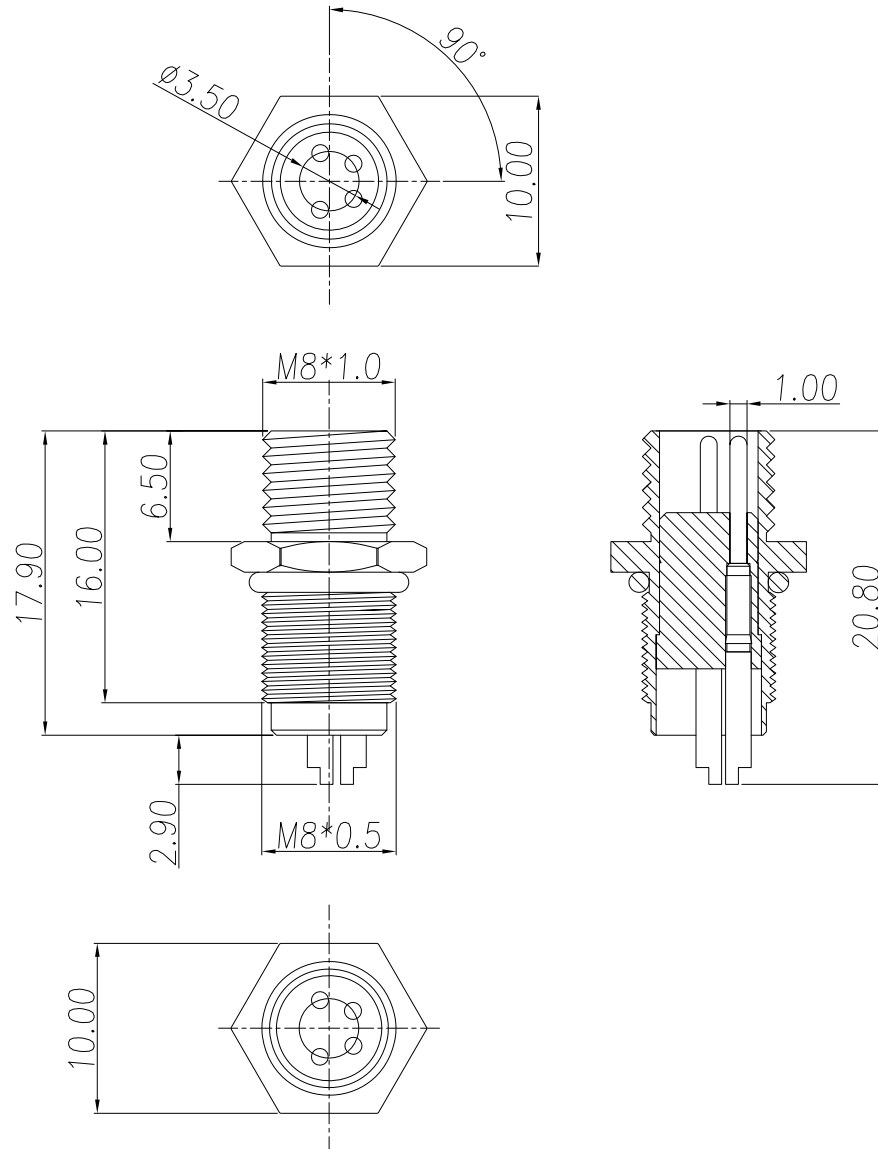
60V

100 MΩhms MIN.

10 mΩhms MAX.

IP67

-40°C TO +85°C



RoHS COMPLIANT

UNITS = mm

DO NOT SCALE FROM DRAWING



THESE DRAWINGS AND SPECIFICATIONS ARE THE PROPERTY OF NorComp AND SHALL NOT BE REPRODUCED, COPIED OR USED AS THE BASIS FOR THE MANUFACTURE OR SALE OF APPARATUS WITHOUT WRITTEN PERMISSION.

DRAWN:

J. KADEL

DATE:

03/01/2022

NorComp

SCALE: NTS

SHEET 1 OF 1

REV 0

DWG NO.

855-004-103RF04