

## NOTE:

## MATERIAL

HOUSING  
CONTACT  
SHELL  
FLANGE  
O-RING

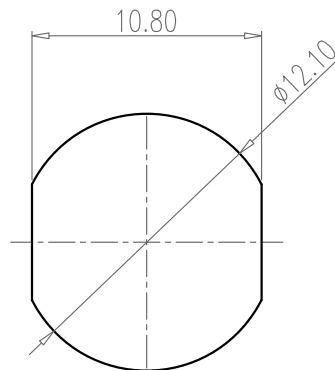
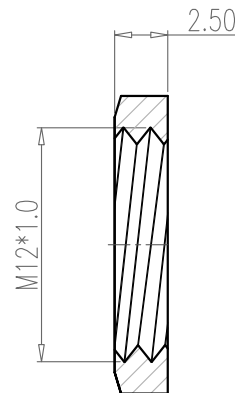
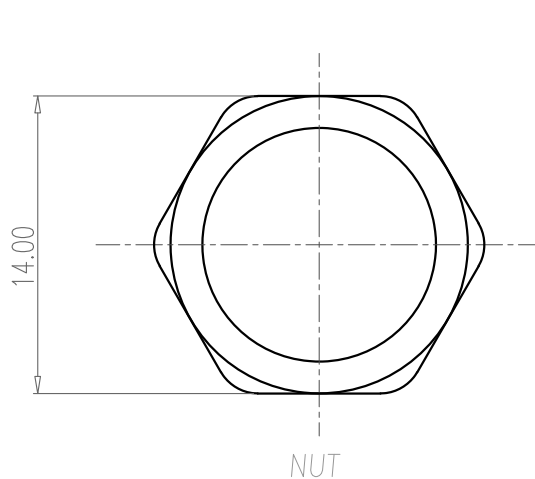
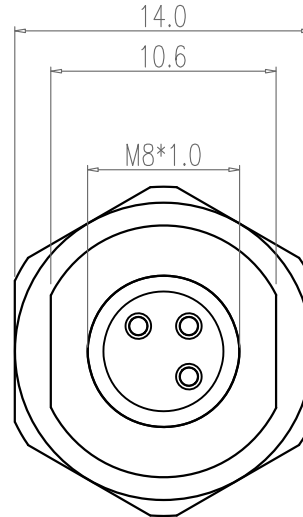
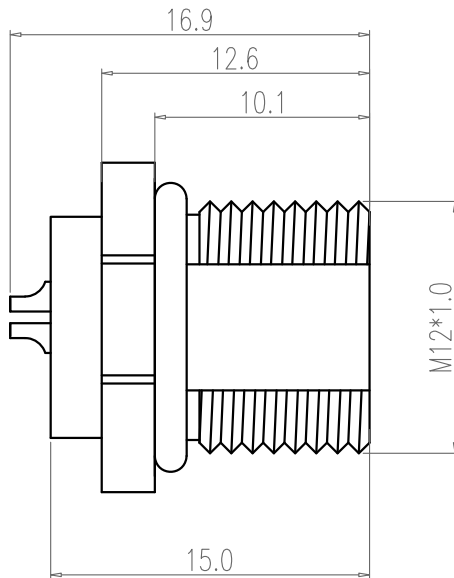
PA66 UL94V-0, BLACK  
BRASS, SEE KEY BELOW  
BRASS, NICKEL  
BRASS, NICKEL  
EPDM

## ELECTRICAL

RATED CURRENT 3A  
RATED VOLTAGE 60V  
INSULATION RESISTANCE 100 MΩhms MIN.  
CONTACT RESISTANCE 10 mΩhms MAX.  
WATER PROOF IP67

## ENVIRONMENT

OPERATION TEMPERATURE -40°C TO +85°C  
MAX WIRE AWG: 24



RECOMMEND PANEL CUT-OUT

855-003-203R2FY

1 = GOLD FLASH  
4 = 10μ" GOLD

RoHS COMPLIANT

UNITS = mm

DO NOT SCALE FROM DRAWING



THESE DRAWINGS AND SPECIFICATIONS ARE THE PROPERTY OF NorComp AND SHALL NOT BE REPRODUCED, COPIED OR USED AS THE BASIS FOR THE MANUFACTURE OR SALE OF APPARATUS WITHOUT WRITTEN PERMISSION.

DRAWN:

J. KADEL

DATE:

04/08/2020

NorComp

SCALE:

NTS

SHEET

1

OF

1

REV

1

DWG NO.

855-003-203R2FY