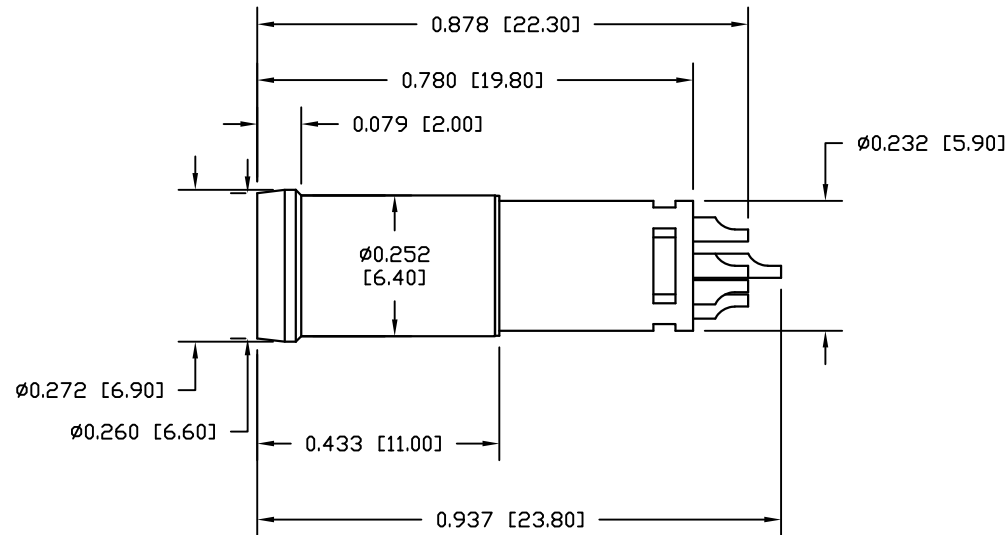
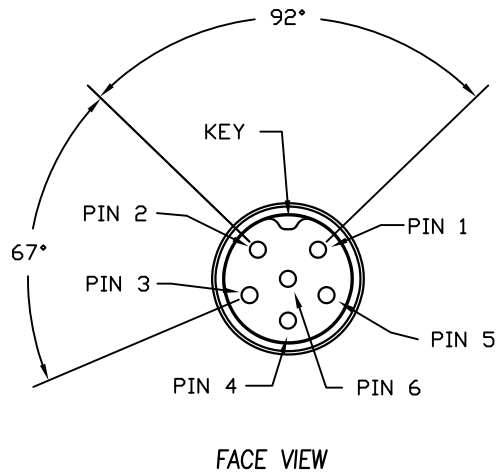


NOTE:

MATERIAL	
HOUSING:	PA66 UL94V-0, BLACK
CONTACT:	BRASS
NUT:	STAINLESS STEEL 316
SHELL:	BRASS
FINISH	
CONTACT:	10 μ " GOLD PLATED OVER 50 μ " NICKEL NICKEL PLATED
SHELL:	
ELECTRICAL	
RATED CURRENT:	1A
RATED VOLTAGE:	30V
INSULATION RESISTANCE:	100 m Ω hms MIN.
CONTACT RESISTANCE:	10 M Ω hms MAX.
WATER PROOF:	IP67
ENVIRONMENT	
OPERATION TEMPERATURE:	-40°C TO +105°C



RoHS COMPLIANT

DO NOT SCALE FROM DRAWING



THESE DRAWINGS AND SPECIFICATIONS ARE THE PROPERTY OF NorComp AND SHALL NOT BE REPRODUCED, COPIED OR USED AS THE BASIS FOR THE MANUFACTURE OR SALE OF APPARATUS WITHOUT WRITTEN PERMISSION.

DRAWN:
M. SIGMON

DATE:
05-03-17

CHECKED:

DATE:

NorComp

SCALE:
N.T.S.

SHEET 1 OF 1

REV 3

DWG NO.

854AV06-10TRLS4