

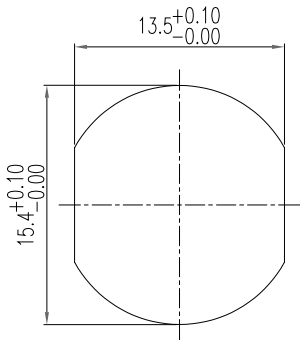
SPECIFICATIONS:

MATERIALS:

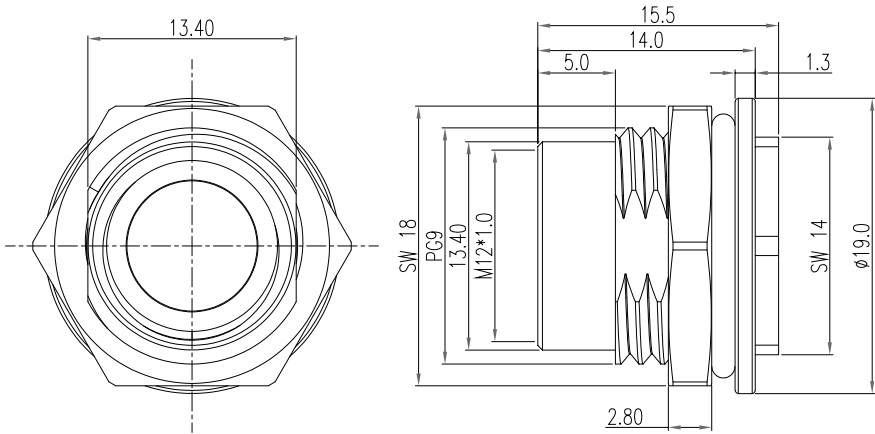
SHELL:	NICKEL PLATED BRASS
ORING:	EPDM/SILICONE
NUT:	NICKEL PLATED BRASS

ENVIRONMENT:

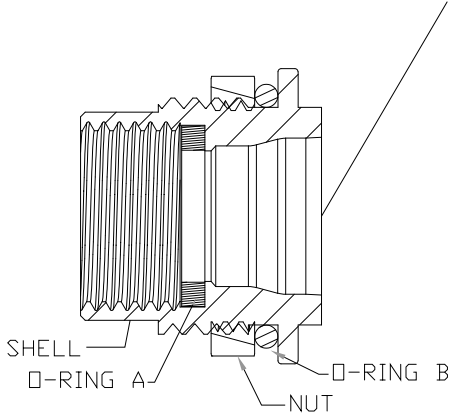
OPERATING TEMPERATURE:	-40°C TO +85°C
WATER PROOF:	IP67 (Mated Condition)



Panel Cut Out Recommendation



INSERT CONNECTOR MATING END HERE



RoHS COMPLIANT



THESE DRAWINGS AND SPECIFICATIONS ARE THE PROPERTY OF NorComp AND SHALL NOT BE REPRODUCED, COPIED OR USED AS THE BASIS FOR THE MANUFACTURE OR SALE OF APPARATUS WITHOUT WRITTEN PERMISSION.	DRAWN: J. KADEL
	DATE: 09/23/2025

UNITS = mm

DO NOT SCALE FROM DRAWING

NorComp	SCALE: NTS	SHEET 1	OF 1	REV 0
	DWG NO. 862-F-FM-SHELL			