

SPECIFICATIONS:

**MATERIALS:**

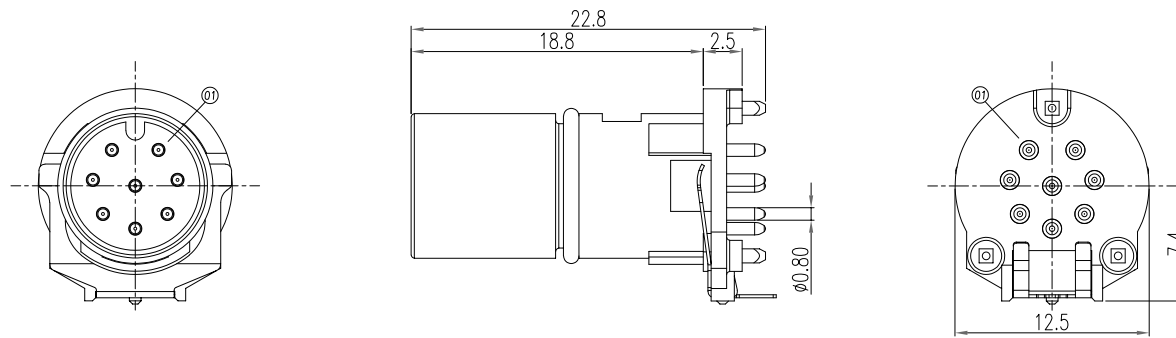
HOUSING:	PA9T, UL94 V-0, BLACK
CONTACTS:	GOLD FLASH PLATED BRASS
GROUND:	NICKEL PLATED PHOSPHOR BRONZE
ORING:	VITON
CAP:	PA66

**ELECTRICAL:**

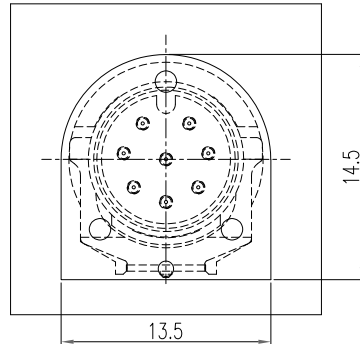
RATED CURRENT:	2A
RATED VOLTAGE:	30V
INSULATION RESISTANCE:	100 MOhms MIN.
CONTACT RESISTANCE:	10 mOhms MAX.

**ENVIRONMENT:**

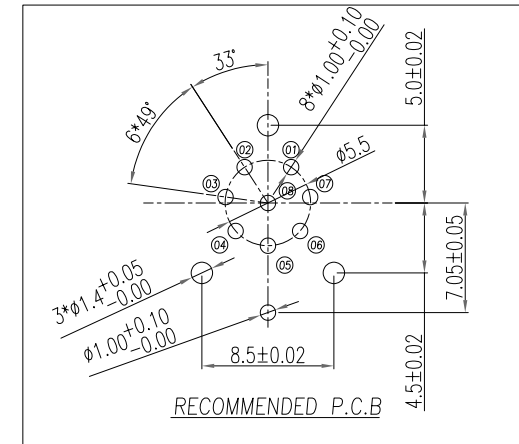
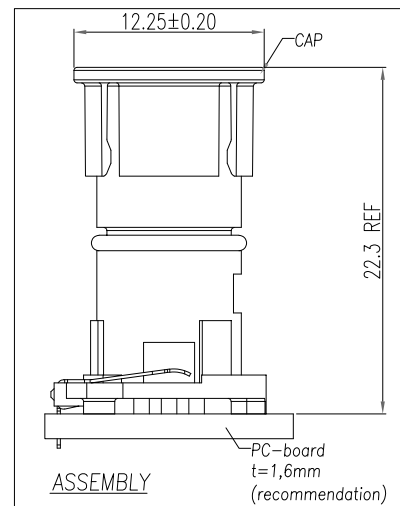
OPERATING TEMPERATURE: -40°C TO +85°C  
WATER PROOF: IP67 (Mated Condition)



MUST PURCHASE PART NUMBER  
"862-M-SHELL" SEPARATELY



Component side (front view)  
Recommended keepout area on the circuit board



## RoHS COMPLIANT



THESE DRAWINGS AND SPECIFICATIONS ARE THE PROPERTY OF NorComp AND SHALL NOT BE REPRODUCED, COPIED OR USED AS THE BASIS FOR THE MANUFACTURE OR SALE OF APPARATUS WITHOUT WRITTEN PERMISSION.

DRAWN:  
J. KADEL

DATE: 03/18/2024

UNITS = mm

# NorComp

DO NOT SCALE FROM DRAWING

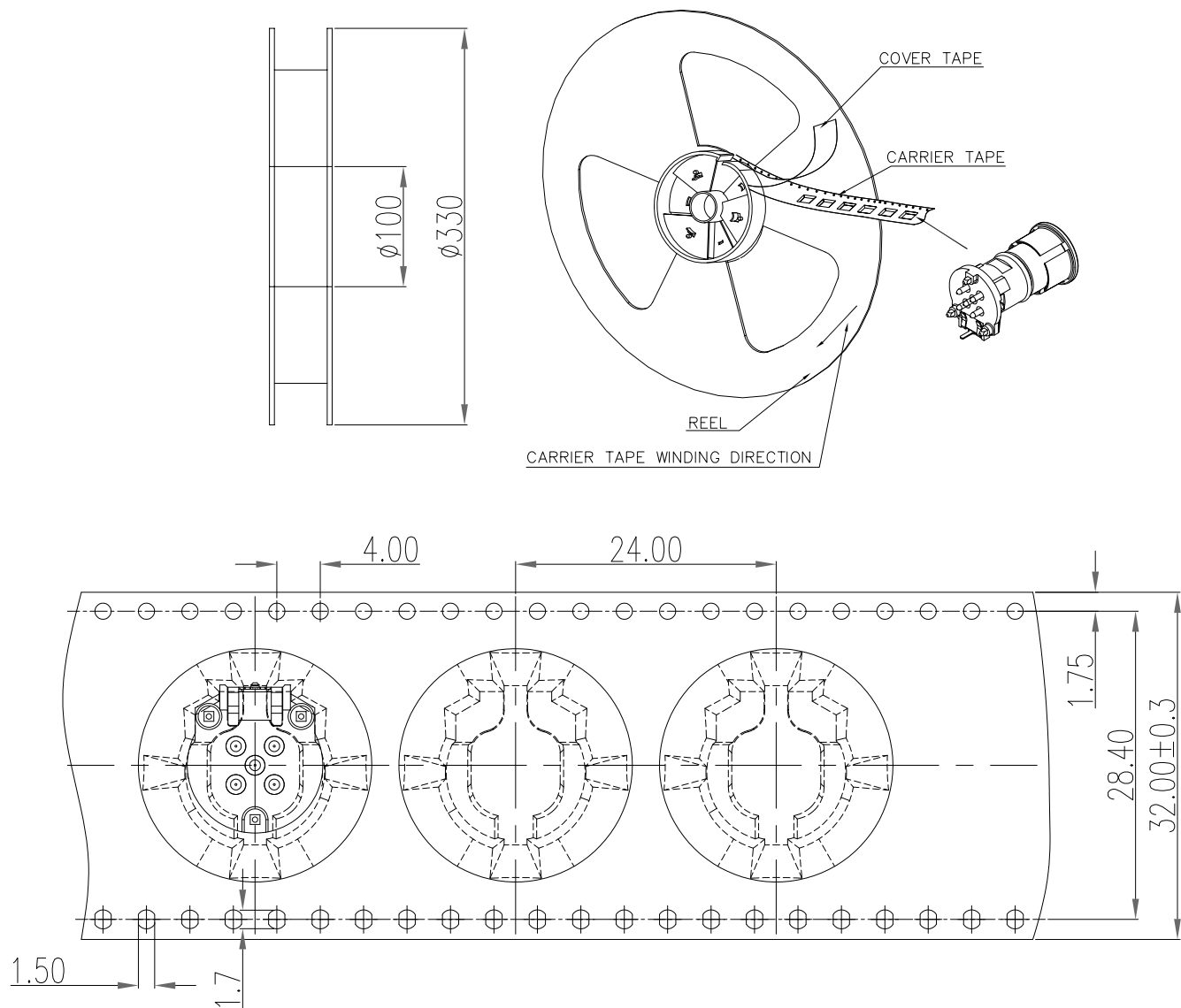
SCALE:  
NTS

SHEET	OF
1	2

REV  
0

DWG NO.

862-008-113R001



The tape size complies with the (EIA-481-D) specification requirements.

RoHS COMPLIANT



THESE DRAWINGS AND SPECIFICATIONS ARE THE PROPERTY OF NorComp AND SHALL NOT BE REPRODUCED, COPIED OR USED AS THE BASIS FOR THE MANUFACTURE OR SALE OF APPARATUS WITHOUT WRITTEN PERMISSION.

DRAWN:

J. KADEL

DATE:

03/18/2024

UNITS = mm

DO NOT SCALE FROM DRAWING

NorComp

SCALE:  
NTS

SHEET 2 OF 2

REV 0

DWG NO.

862-008-113R001