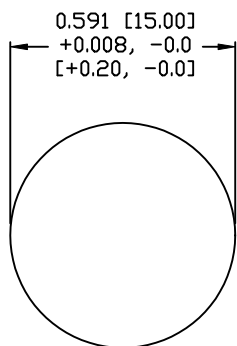
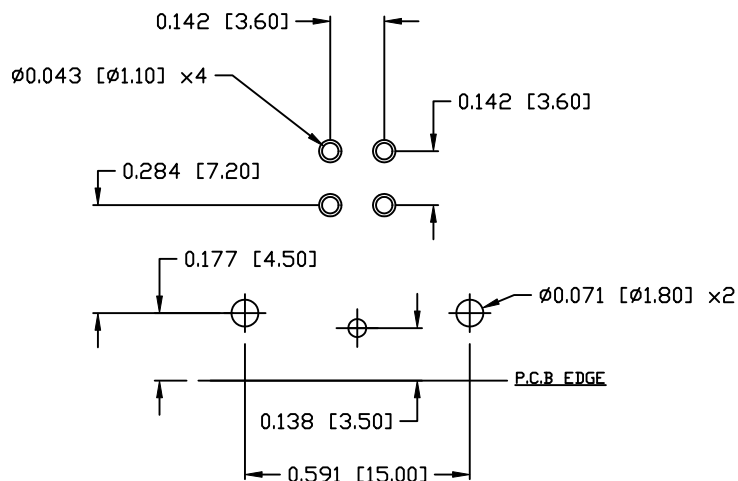


DESCRIPTION: M12 FEMALE - R/A - PANEL MOUNT (REAR) - PCB - 4 POS. - D-CODE



PANEL CUT-OUT



PCB LAYOUT

NOTE:

MATERIAL

HOUSING: PBT UL94V-0, BLACK
CONTACT: BRASS
NUT: BRASS
O-RING: NBR, BLACK
BACK HOUSING: PBT, UL94V-0, BLACK
DOWN HOUSING: PBT, UL94V-0, BLACK

FINISH

CONTACT: GOLD PLATED
UNDER PLATE: NICKEL
SHELL: STAIN NICKEL
(80-100µ) OVER ALL

ELECTRICAL

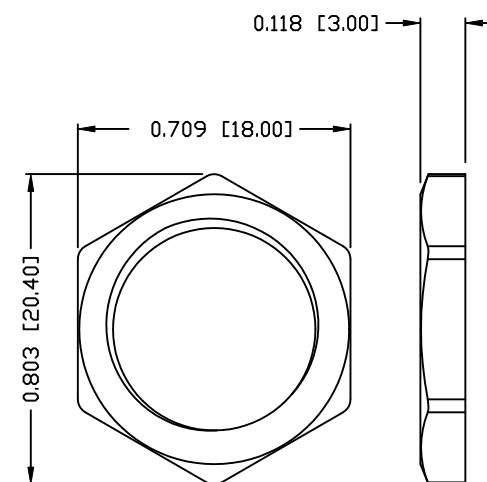
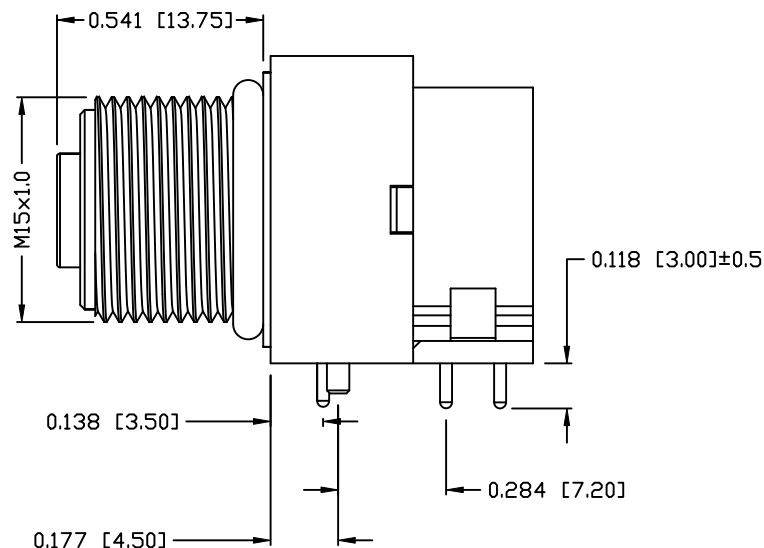
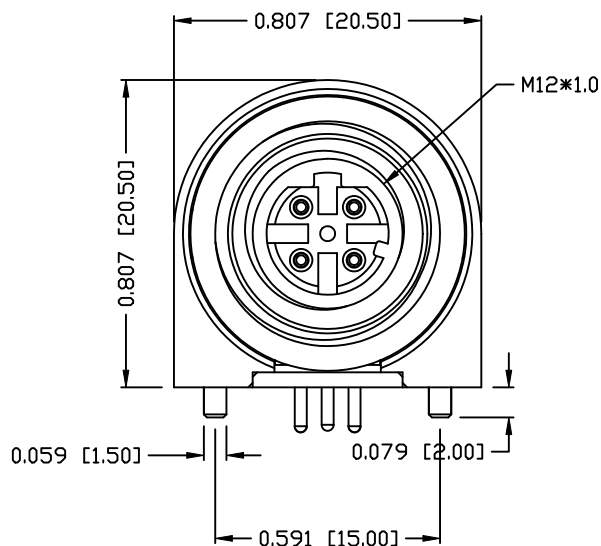
RATED CURRENT: 5A
RATED VOLTAGE: 125V
INSULATION RESISTANCE: 100 MΩhms MIN.
CONTACT RESISTANCE: 10 MΩhms MAX.
WATER PROOF: IP67

ENVIRONMENT

OPERATION TEMPERATURE: -40°C TO +85°C

861RD04-213R00Y

1 = GOLD FLASH
4 = 10µ" GOLD



NUT

RoHS COMPLIANT

DO NOT SCALE FROM DRAWING



THESE DRAWINGS AND SPECIFICATIONS ARE THE PROPERTY OF NorComp AND SHALL NOT BE REPRODUCED, COPIED OR USED AS THE BASIS FOR THE MANUFACTURE OR SALE OF APPARATUS WITHOUT WRITTEN PERMISSION.

DRAWN:

M. SIGMON

DATE:

07-26-16

CHECKED:

DATE:

NorComp

SCALE:

N.T.S.

SHEET

OF

1

1

REV

1

DWG NO.

861RD04-213R00Y