

SPECIFICATIONS:

<b>MATERIALS:</b>	
HOUSING:	PA66, UL94 V-0, BLACK
CONTACTS:	10µ" GOLD PLATED BRASS
NUT:	NICKEL PLATED BRASS
SHELL:	NICKEL PLATED BRASS
ORING:	EPDM, BLACK

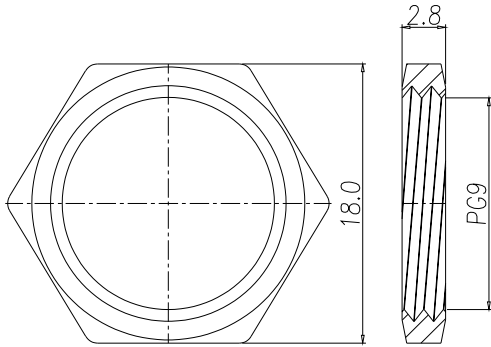
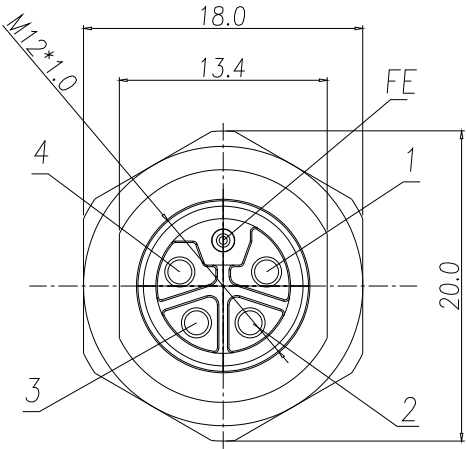
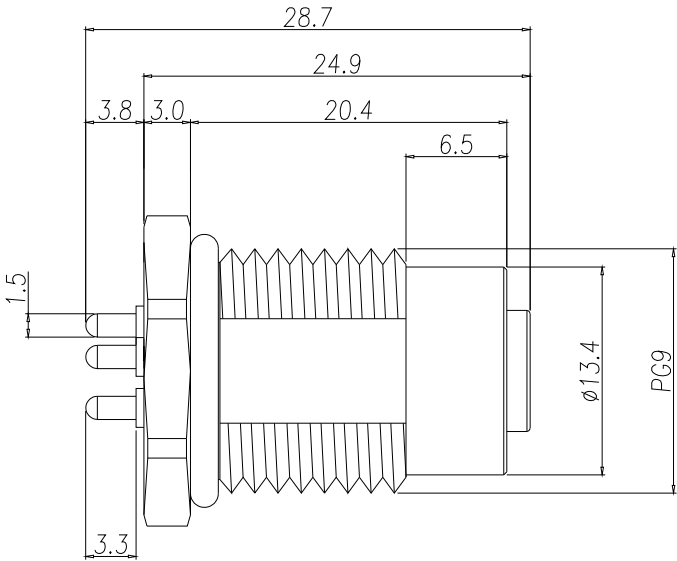
<b>ELECTRICAL:</b>	
RATED CURRENT:	16A
RATED VOLTAGE:	63V
INSULATION RESISTANCE:	100 MOhms MIN.
CONTACT RESISTANCE:	10 mOhms MAX.

<b>ENVIRONMENT:</b>	
OPERATING TEMPERATURE:	-40°C TO +85°C
WATER PROOF:	IP67

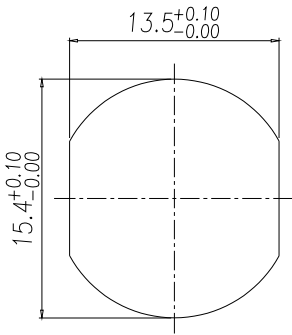
860-LP5-213RR04

3 = BRASS/NICKEL SHELL & NUT  
S = STAINLESS STEEL (SS) SHELL & NUT

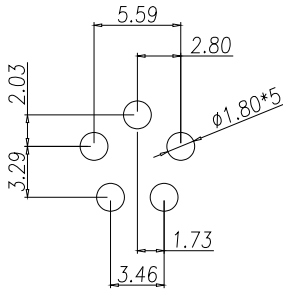
Full stainless steel variant successfully passes  
96-hour salt spray testing per ASTM B117



NUT



RECOMMENDED PANEL CUT-OUT



PCB LAYOUT

RoHS COMPLIANT



THESE DRAWINGS AND SPECIFICATIONS ARE THE PROPERTY OF NorComp AND SHALL NOT BE REPRODUCED, COPIED OR USED AS THE BASIS FOR THE MANUFACTURE OR SALE OF APPARATUS WITHOUT WRITTEN PERMISSION.

DRAWN:  
J. KADEL

DATE:  
11/28/2023

UNITS = mm

DO NOT SCALE FROM DRAWING

NorComp

SCALE:  
NTS

SHEET 1 OF 1

REV 2

DWG NO.

860-LP5-213RR04