

DESCRIPTION: M12 MALE - 5 POS. - L CODE - VERT PCB

SPECIFICATIONS:

MATERIALS:

HOUSING:	PA66, UL94 V-0, BLACK
CONTACTS:	GOLD PLATED BRASS (SEE P/N KEY BELOW)
NUT:	(SEE P/N KEY BELOW)
SHELL:	(SEE P/N KEY BELOW)
ORING:	EPDM

ELECTRICAL:

RATED CURRENT:	16A
RATED VOLTAGE:	63V
INSULATION RESISTANCE:	100 MOhms MIN.
CONTACT RESISTANCE:	10 mOhms MAX.

ENVIRONMENT:

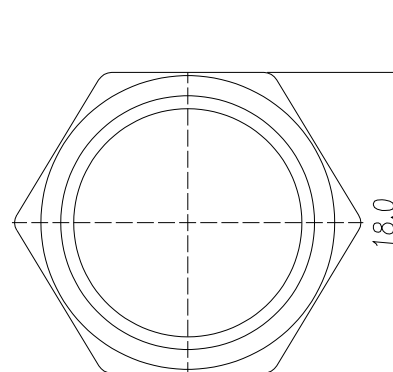
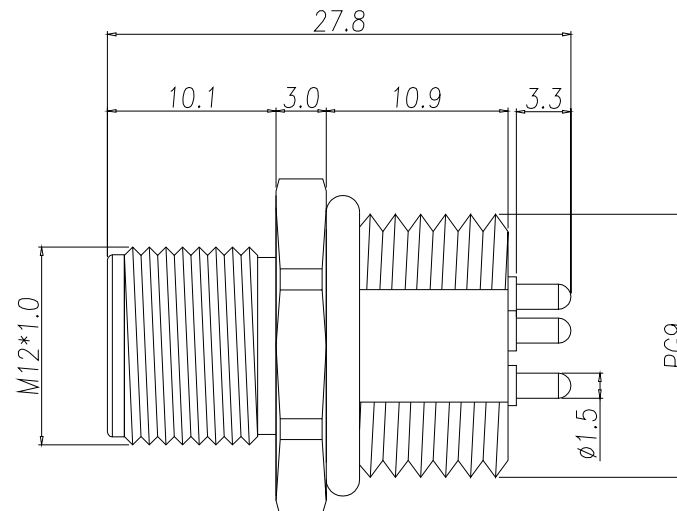
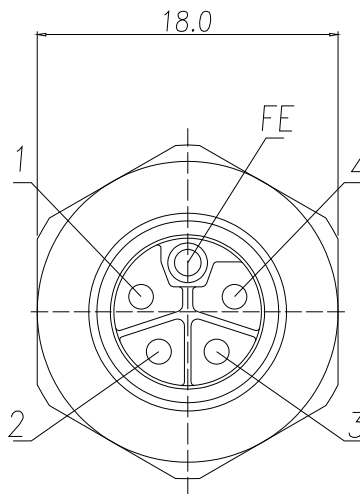
OPERATING TEMPERATURE:	-40°C TO +85°C
WATER PROOF:	IP67

860-LP5-113R00Y

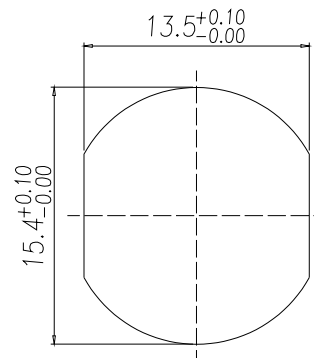
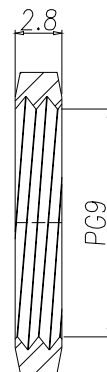
3 = BRASS/NICKEL SHELL & NUT
S = STAINLESS STEEL (SS) SHELL & NUT

1 = GOLD FLASH
4 = 10µ" GOLD

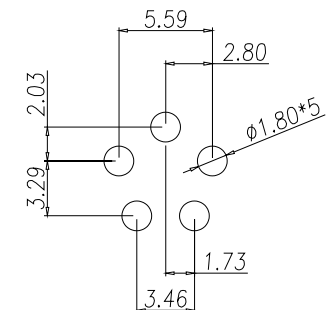
Full stainless steel variant successfully passes
96-hour salt spray testing per ASTM B117



NUT



RECOMMENDPANEL CUT-OUT



P.C.B LAYOUT

RoHS COMPLIANT



THESE DRAWINGS AND SPECIFICATIONS ARE THE PROPERTY OF NorComp AND SHALL NOT BE REPRODUCED, COPIED OR USED AS THE BASIS FOR THE MANUFACTURE OR SALE OF APPARATUS WITHOUT WRITTEN PERMISSION.

DRAWN:

J. KADEL

DATE:

10/26/2020

UNITS = mm

DO NOT SCALE FROM DRAWING

NorComp

SCALE:
NTS

SHEET 1 OF 1

REV 5

DWG NO.

860-LP5-113R004