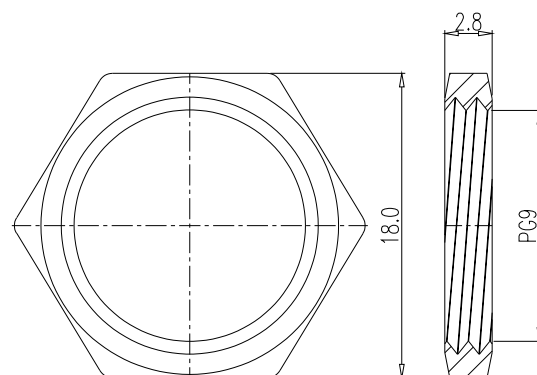
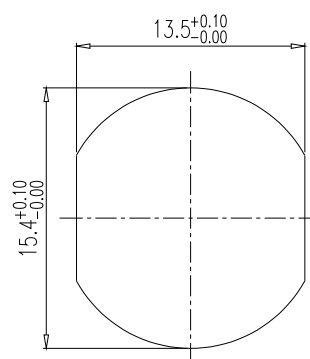


OPERATION TEMPERATURE: -40°C TO +85°C

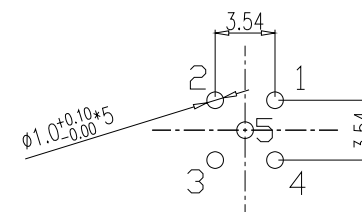
IP67



NUT



RECOMMENDPANEL CUT-OUT



RECOMMENDED P.C.B LAYOUT (TOP VIEW)

RoHS COMPLIANT



06/12/2019

DO NOT SCALE FROM DRAWING

NorComp

SCALE:
NTS

SHEET	OF
1	1

REV
1

DWG NO.

860-B05-113R004