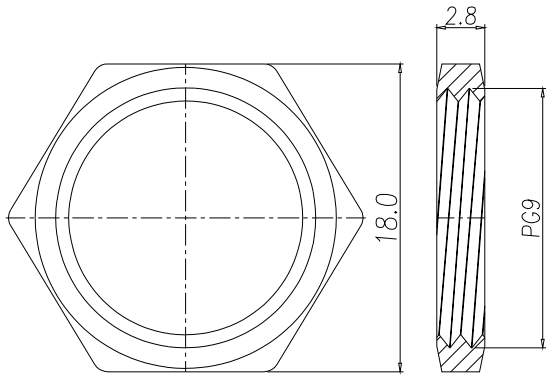
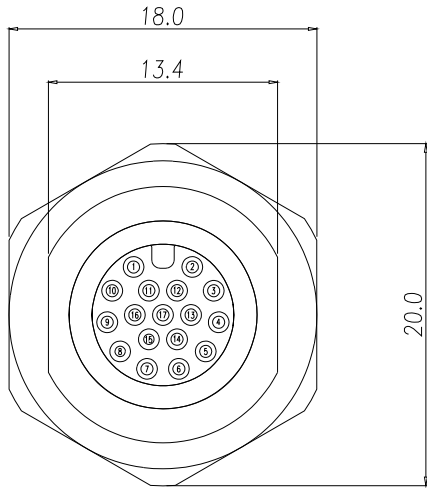
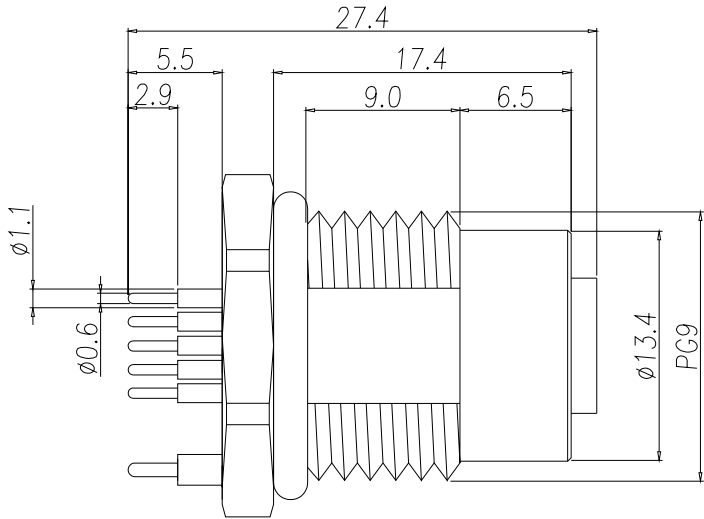


SPECIFICATIONS:

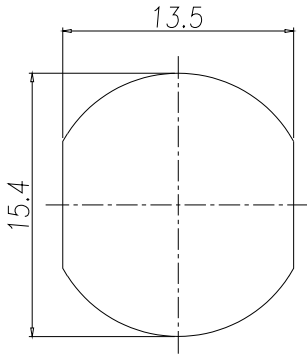
<b>MATERIALS:</b>	
HOUSING:	PBT, UL94 V-0, BLACK
CONTACTS:	10µ" GOLD PLATED BRASS
NUT:	NICKEL PLATED BRASS
SHELL:	NICKEL PLATED BRASS
ORING:	EPDM, BLACK

<b>ELECTRICAL:</b>	
RATED CURRENT:	1.5A
RATED VOLTAGE:	30V
INSULATION RESISTANCE:	100 MOhms MIN.
CONTACT RESISTANCE:	10 mOhms MAX.

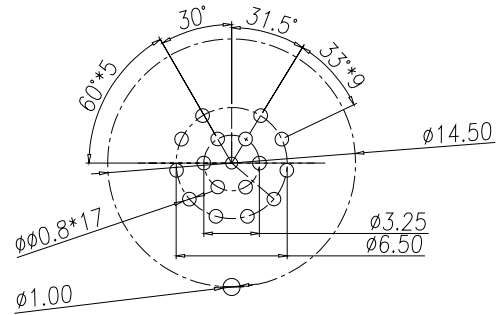
<b>ENVIRONMENT:</b>	
OPERATING TEMPERATURE:	-40°C TO +85°C
WATER PROOF:	IP67



NUT



RECOMMENDED PANEL CUT-OUT



RECOMMENDED P.C.B LAYOUT

RoHS COMPLIANT



THESE DRAWINGS AND SPECIFICATIONS ARE THE PROPERTY OF NorComp AND SHALL NOT BE REPRODUCED, COPIED OR USED AS THE BASIS FOR THE MANUFACTURE OR SALE OF APPARATUS WITHOUT WRITTEN PERMISSION.

DRAWN:  
J. KADEL

DATE:  
12/11/2023

UNITS = mm

DO NOT SCALE FROM DRAWING

NorComp

SCALE:  
NTS

SHEET 1 OF 1

REV 0

DWG NO.

860-017-2G3R004