

NOTE:

MATERIAL

HOUSING:
CONTACT:
NUT:
SHELL:
O-RING 1:

PBT UL94V-0, BLACK
BRASS
BRASS
BRASS
EPDM, BLACK

FINISH

CONTACT:
NUT:
SHELL:

10u" GOLD PLATED
NICKEL PLATED
NICKEL PLATED

ELECTRICAL

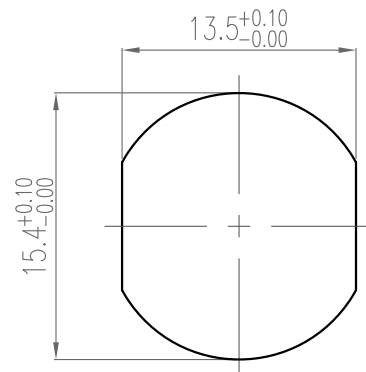
RATED CURRENT:
RATED VOLTAGE:
INSULATION RESISTANCE:
CONTACT RESISTANCE:
WATER PROOF:

4A
250V
100 MΩhms MIN.
10 mΩhms MAX.
IP67

ENVIRONMENT

OPERATION TEMPERATURE:
MAX WIRE AWG:

-40°C TO +85°C
22



RECOMMEND PANEL CUT-OUT

RoHS COMPLIANT



THESE DRAWINGS AND SPECIFICATIONS ARE THE PROPERTY OF NorComp AND SHALL NOT BE REPRODUCED, COPIED OR USED AS THE BASIS FOR THE MANUFACTURE OR SALE OF APPARATUS WITHOUT WRITTEN PERMISSION.

DRAWN:

J. KADEL

DATE:

04/16/2020

UNITS = mm

DO NOT SCALE FROM DRAWING

NorComp

SCALE:

NTS

SHEET

1

OF

1

REV

1

DWG NO.

859RD04-203RMR4