

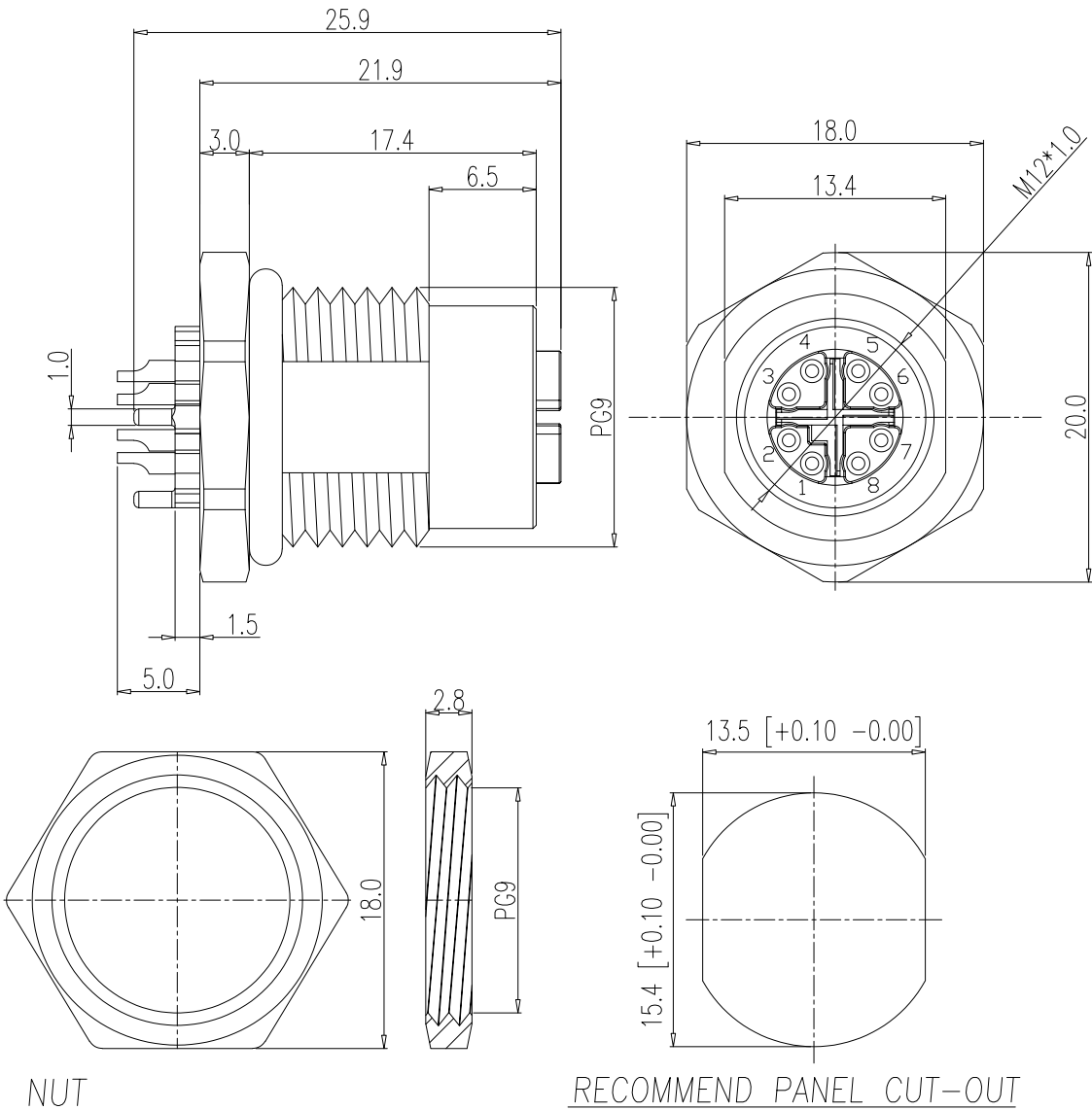
DESCRIPTION: M12 FEMALE - PANEL MOUNT (REAR) - 8 POS. - X-CODE - ROTATED

SPECIFICATIONS:

**MATERIALS:**  
HOUSING: PA66, UL94 V-0, BLACK  
CONTACTS: GOLD PLATED BRASS (SEE P/N KEY BELOW)  
NUT: (SEE P/N KEY BELOW)  
SHELL: (SEE P/N KEY BELOW)  
X-SHELL: NICKEL PLATED ZINC ALLOY  
ORING: EPDM, BLACK

**ELECTRICAL:**  
RATED CURRENT: 0.5A  
RATED VOLTAGE: 50VAC/60VDC  
INSULATION RESISTANCE: 100 MOhms MIN.  
CONTACT RESISTANCE: 10 mOhms MAX.

**ENVIRONMENT:**  
OPERATING TEMPERATURE: -40°C TO +85°C  
WATER PROOF: IP67  
  
MAX WIRE AWG: 24



3 = BRASS/NICKEL SHELL & NUT  
S = STAINLESS STEEL SHELL & NUT  
  
1 = GOLD FLASH  
4 = 10u" GOLD

Full stainless steel variant successfully passes  
96-hour salt spray testing per ASTM B117

RoHS COMPLIANT



THESE DRAWINGS AND SPECIFICATIONS ARE THE PROPERTY OF NorComp AND SHALL NOT BE REPRODUCED, COPIED OR USED AS THE BASIS FOR THE MANUFACTURE OR SALE OF APPARATUS WITHOUT WRITTEN PERMISSION.

DRAWN:  
J. KADEL

DATE:  
05/02/2019

UNITS = mm

DO NOT SCALE FROM DRAWING

NorComp

SCALE:  
NTS

SHEET 1 OF 1

REV 4

DWG NO.

859-X08-203R0RY