

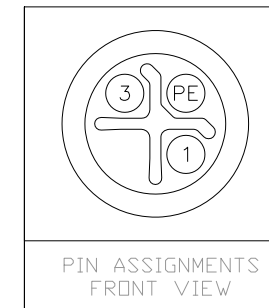
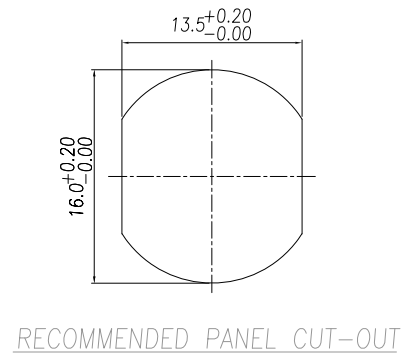
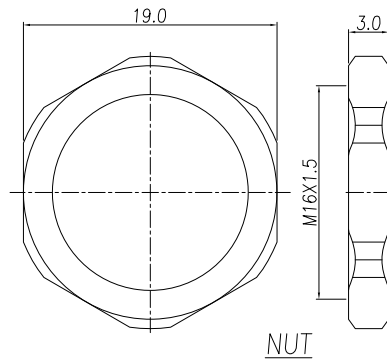
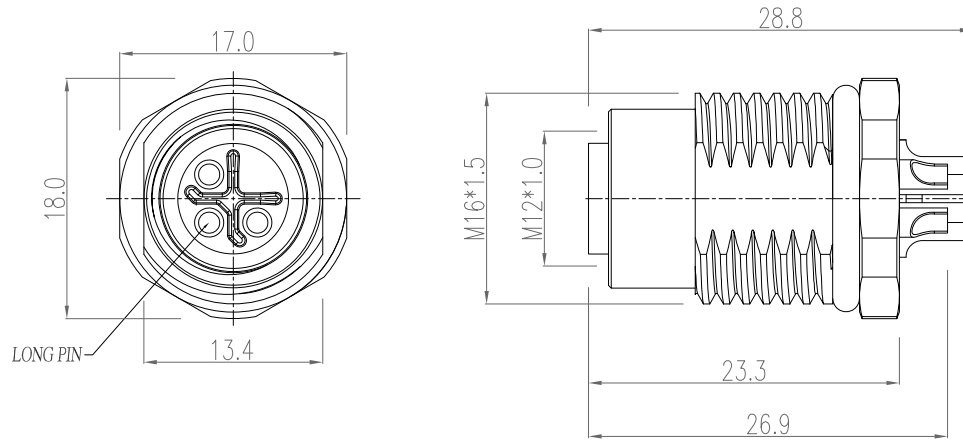
## NOTE:

## MATERIAL

HOUSING:	PA66 UL94V-0, BLACK
CONTACT:	BRASS, 10u" GOLD PLATED
NUT:	NICKEL PLATED BRASS
SHELL:	NICKEL PLATED BRASS
O-RING:	EPDM, BLACK

## ELECTRICAL

RATED CURRENT:	12A
RATED VOLTAGE:	630V
INSULATION RESISTANCE:	100 MΩhms MIN.
CONTACT RESISTANCE:	10 mΩhms MAX.
WATER PROOF:	IP67
ENVIRONMENT OPERATION TEMPERATURE:	-40°C TO +105°C



RoHS COMPLIANT



THESE DRAWINGS AND SPECIFICATIONS ARE THE PROPERTY OF NorComp AND SHALL NOT BE REPRODUCED, COPIED OR USED AS THE BASIS FOR THE MANUFACTURE OR SALE OF APPARATUS WITHOUT WRITTEN PERMISSION.

DRAWN:

J. KADEL

DATE:

08/03/2021

UNITS = mm

DO NOT SCALE FROM DRAWING

NorComp

SCALE:  
NTS

SHEET 1 OF 1

REV  
1

DWG NO.

859-SP3-203R004