NUT

NOTE:

MATERIAL

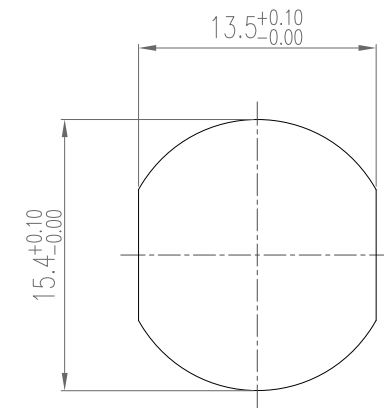
HOUSING: PBT UL94V-0, BLACK
 CONTACT: 10u" GOLD PLATED BRASS
 SHELL: NICKEL PLATED BRASS
 NUT: NICKEL PLATED BRASS
 O-RING: EPDM

ELECTRICAL

RATED CURRENT: 4A
 RATED VOLTAGE: 250V
 INSULATOR RESISTANCE: 100 MΩhms MIN.
 CONTACT RESISTANCE: 10 mΩhms MAX.
 WATER PROOF: IP67

ENVIRONMENT

OPERATION TEMPERATURE: -40°C TO +85°C

RECOMMEND PANEL CUT-OUT

RoHS COMPLIANT

UNITS = mm

DO NOT SCALE FROM DRAWING



THESE DRAWINGS AND SPECIFICATIONS ARE THE PROPERTY OF NorComp AND SHALL NOT BE REPRODUCED, COPIED OR USED AS THE BASIS FOR THE MANUFACTURE OR SALE OF APPARATUS WITHOUT WRITTEN PERMISSION.

DRAWN:

J. KADEL

DATE:

01/26/2022

NorComp

SCALE:

NTS

SHEET

OF

1

1

REV

0

DWG NO.

859-B04-103R004