

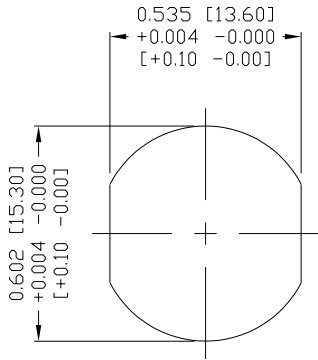
SPECIFICATIONS:

MATERIALS:	
HOUSING:	PBT, UL94 V-0, BLACK
CONTACTS:	GOLD PLATED BRASS (SEE P/N KEY BELOW)
NUT:	(SEE P/N KEY BELOW)
SHELL:	(SEE P/N KEY BELOW)
ORING:	EPDM, BLACK

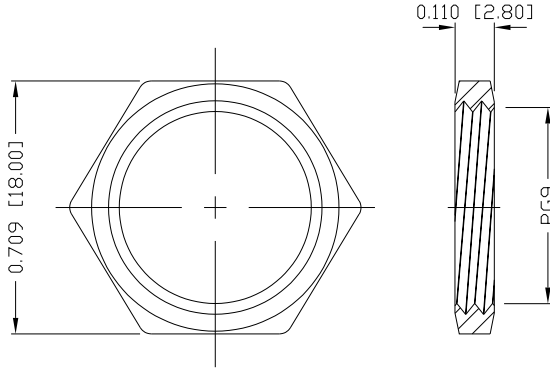
ELECTRICAL:	
RATED CURRENT:	1.5A
RATED VOLTAGE:	30V
INSULATION RESISTANCE:	100 MOhms MIN.
CONTACT RESISTANCE:	10 mOhms MAX.

ENVIRONMENT:	
OPERATING TEMPERATURE:	-40°C TO +85°C
WATER PROOF:	IP67

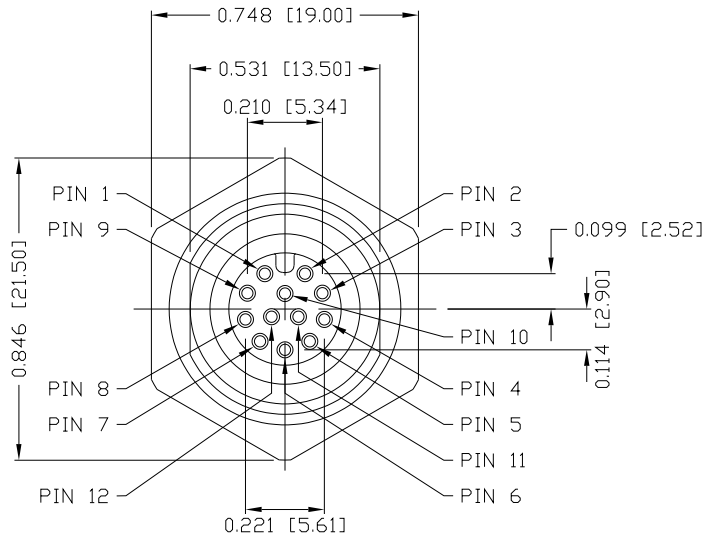
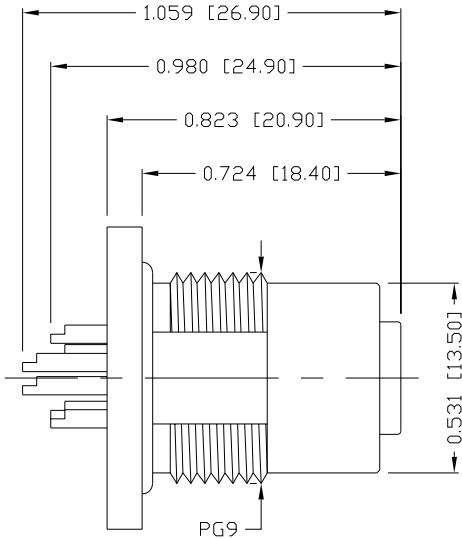
MAX WIRE AWG:	26
---------------	----



PANEL CUTOUT



NUT



859-012-203R00Y

3 = BRASS/NICKEL SHELL & NUT
S = STAINLESS STEEL SHELL & NUT

1 = GOLD FLASH
4 = 10u" GOLD

Full stainless steel variant successfully passes
96-hour salt spray testing per ASTM B117

RoHS COMPLIANT



THESE DRAWINGS AND SPECIFICATIONS ARE THE PROPERTY OF NorComp AND SHALL NOT BE REPRODUCED, COPIED OR USED AS THE BASIS FOR THE MANUFACTURE OR SALE OF APPARATUS WITHOUT WRITTEN PERMISSION.

DRAWN:
M. SIGMON

DATE:
03/08/2016

UNITS = inch [mm]

DO NOT SCALE FROM DRAWING

NorComp

SCALE:
NTS

SHEET 1 OF 1

REV 4

DWG NO.

859-012-203R00Y