

DESCRIPTION: M12 // M // 12P // PNL MNT SC // M16 THREADS

SPECIFICATIONS:

MATERIALS:

HOUSING: PBT, UL94 V-0, BLACK
CONTACTS: 10u" GOLD PLATED BRASS
NUT: SEE P/N KEY BELOW
SHELL: SEE P/N KEY BELOW
ORING: EPDM

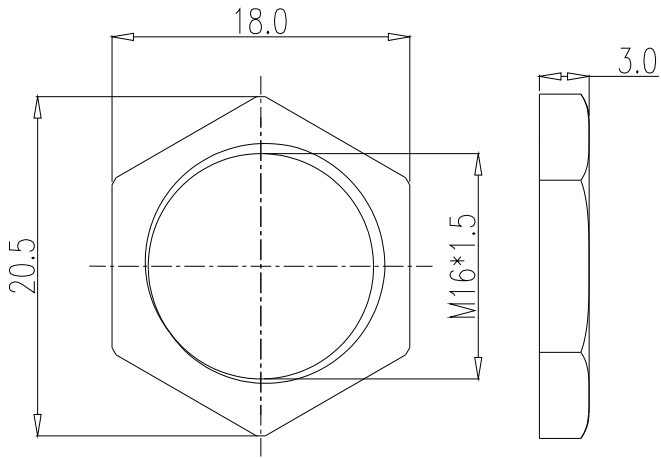
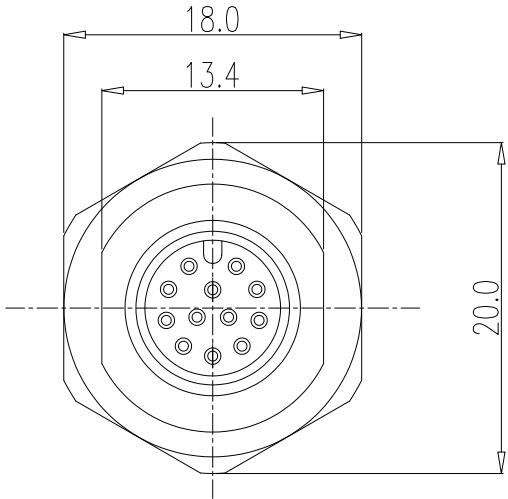
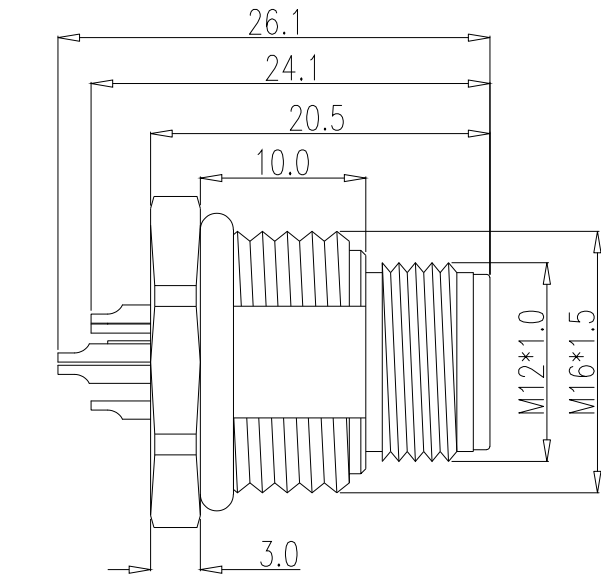
ELECTRICAL:

RATED CURRENT: 1.5A
RATED VOLTAGE: 30V
INSULATION RESISTANCE: 100 MOhms MIN.
CONTACT RESISTANCE: 10 mOhms MAX.

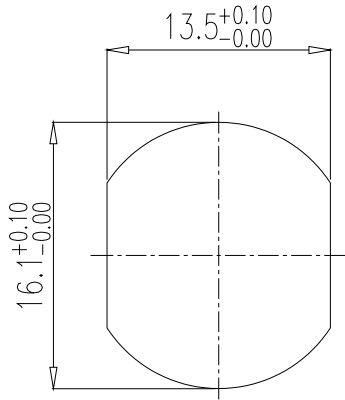
ENVIRONMENT:

OPERATING TEMPERATURE: -40°C TO +85°C
WATER PROOF: IP67

MAX WIRE AWG: 26



NUT



RECOMMEND PANEL CUT-OUT

859-012-103R164

3 = BRASS/NICKEL SHELL & NUT
S = STAINLESS STEEL SHELL & NUT

Full stainless steel variant successfully passes
96-hour salt spray testing per ASTM B117

RoHS COMPLIANT



THESE DRAWINGS AND SPECIFICATIONS ARE THE PROPERTY OF NorComp AND SHALL NOT BE REPRODUCED, COPIED OR USED AS THE BASIS FOR THE MANUFACTURE OR SALE OF APPARATUS WITHOUT WRITTEN PERMISSION.

DRAWN:
J. KADEL

DATE:
06/26/2023

UNITS = mm

DO NOT SCALE FROM DRAWING

NorComp

SCALE:
NTS

SHEET 1 OF 1

REV 2

DWG NO.

859-012-103R164